

Table 1 Consumer Price Indices and Year-on-year Rates of Change
at Section Level for July 2006
(Oct. 2004 - Sep. 2005 = 100)

<u>Section</u>	<u>Composite CPI</u>		<u>CPI(A)</u>		<u>CPI(B)</u>		<u>CPI(C)</u>	
	Index for Jul 2006	% change over Jul 2005	Index for Jul 2006	% change over Jul 2005	Index for Jul 2006	% change over Jul 2005	Index for Jul 2006	% change over Jul 2005
Food	102.9	+2.2	103.1	+2.1	102.7	+1.9	102.9	+2.7
<i>Meals bought away from home</i>	101.9	+1.6	101.5	+1.1	101.7	+1.3	102.7	+3.0
<i>Food, excluding meals bought away from home</i>	104.6	+3.0	105.3	+3.4	104.5	+3.1	103.3	+2.2
Housing #	105.5	+4.8	104.5	+4.0	106.1	+5.2	106.0	+5.3
<i>Private housing rent</i>	106.6	+5.8	106.1	+5.5	107.0	+6.1	106.4	+5.6
<i>Public housing rent</i>	100.3	+0.1	100.3	+0.1	100.3	+0.1	-	-
Electricity, gas and water	104.6	+4.5	104.4	+4.2	104.8	+4.7	105.0	+4.8
Alcoholic drinks and tobacco	96.1	-4.8	95.2	-5.8	96.7	-4.2	98.0	-2.8
Clothing and footwear	97.5	+0.5	99.5	+1.8	99.2	+1.7	94.0	-2.0
Durable goods	90.8	-7.1	90.1	-7.6	89.5	-8.1	92.8	-5.6
Miscellaneous goods	101.8	+1.8	100.8	+0.9	101.7	+1.6	103.2	+3.0
Transport	102.0	+0.5	101.3	+0.2	102.1	+0.6	102.4	+0.5
Miscellaneous services	103.3	+2.7	101.6	+1.9	103.6	+3.1	104.1	+2.7
<i>Selected major groups</i>								
<i>Educational services</i>	101.7	+1.2	101.8	+1.4	101.5	+1.2	101.7	+1.2
<i>Telephone and other communications services</i>	100.1	+2.6	100.0	+2.4	100.0	+2.5	100.3	+3.6
<i>Medical services</i>	101.1	+1.0	101.0	+1.0	101.3	+1.3	101.1	+0.8
All items	102.7	+2.3	102.4	+2.0	102.8	+2.4	102.9	+2.5

- Not applicable.

Note:

The CPI(A), CPI(B) and CPI(C) are compiled by reference to the average expenditure patterns for different groups of households as obtained from the Household Expenditure Survey. By aggregating the expenditure patterns of all households covered by the above three indices, a Composite CPI is also compiled.

The expenditure ranges of the households covered in the 2004/05-based CPI series are as follows:

	<u>Approximate percentage of households covered</u>	<u>Average monthly household expenditure range (at 2004/05 prices)</u>
	(%)	(\$)
CPI(A)	50	4,000 - 15,499
CPI(B)	30	15,500 - 27,499
CPI(C)	10	27,500 - 59,999
Composite CPI	90	4,000 - 59,999

Apart from "Private housing rent" and "Public housing rent", the "Housing" section also includes "Management fees and other housing charges" and "Materials for house maintenance".

Table 2 Movements of Consumer Price Indices, July 2004 - July 2006

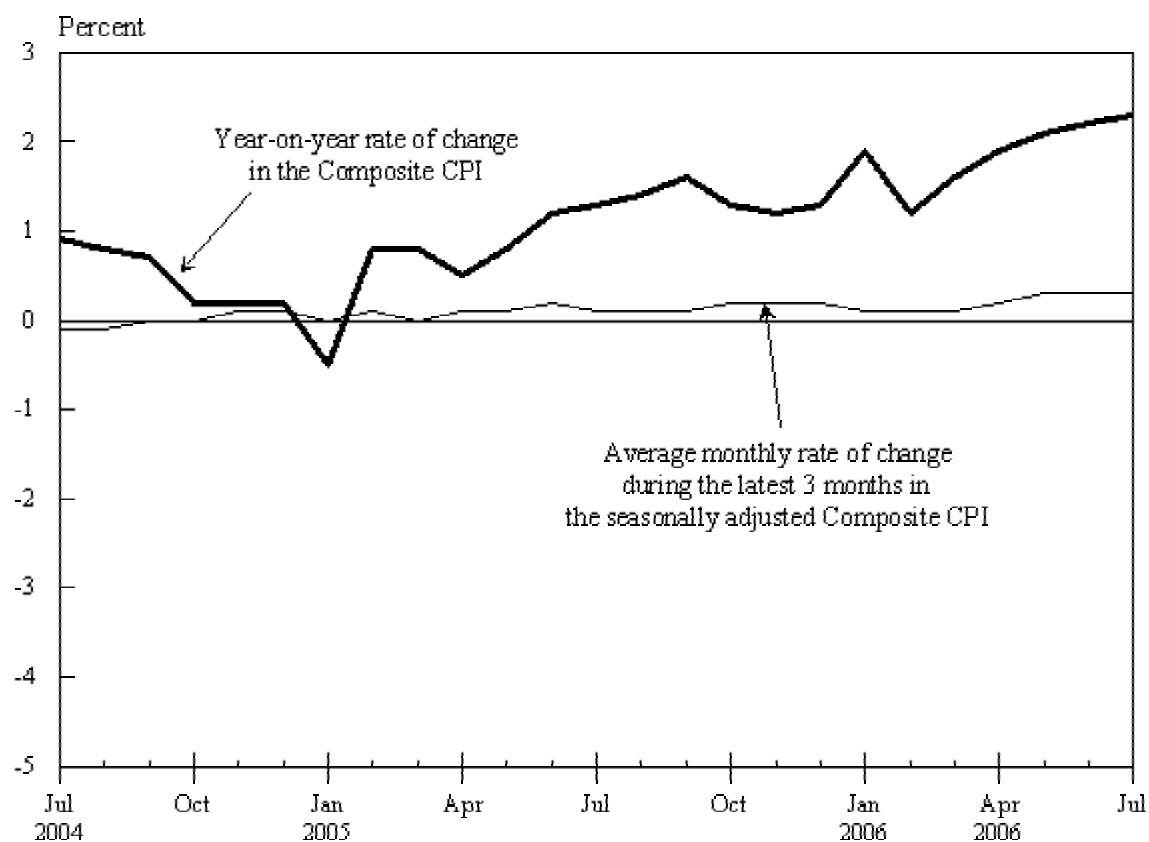
		CPI				Seasonally adjusted CPI [#]			
		Year-on-year rate of change (%)				Average monthly rate of change during the latest 3 months (%)			
<u>Year/month</u>		Composite				Composite			
		<u>CPI</u>	<u>CPI(A)</u>	<u>CPI(B)</u>	<u>CPI(C)</u>	<u>CPI</u>	<u>CPI(A)</u>	<u>CPI(B)</u>	<u>CPI(C)</u>
2004	Jul	+0.9	+1.5	+0.8	+0.4	-0.1	*	-0.1	-0.2
	Aug	+0.8	+1.4	+0.7	+0.1	-0.1	-0.1	-0.1	-0.1
	Sep	+0.7	+1.3	+0.6	+0.3	*	*	*	-0.1
	Oct	+0.2	+0.4	+0.1	-0.1	*	*	*	*
	Nov	+0.2	+0.6	+0.2	-0.2	+0.1	+0.1	+0.1	+0.1
	Dec	+0.2	+0.5	+0.2	-0.1	+0.1	+0.2	+0.2	+0.1
2005	Jan	-0.5	-0.2	-0.5	-1.0	*	*	*	-0.1
	Feb	+0.8	+1.1	+0.8	+0.5	+0.1	+0.1	+0.1	*
	Mar	+0.8	+1.1	+0.8	+0.3	*	+0.1	+0.1	*
	Apr	+0.5	+0.7	+0.4	+0.2	+0.1	+0.1	+0.1	+0.1
	May	+0.8	+0.9	+0.8	+0.8	+0.1	+0.1	*	+0.1
	Jun	+1.2	+1.3	+1.2	+1.0	+0.2	+0.1	+0.1	+0.2
	Jul	+1.3	+1.3	+1.3	+1.3	+0.1	+0.1	+0.1	+0.2
	Aug	+1.4	+1.3	+1.4	+1.5	+0.1	+0.1	+0.1	+0.2
	Sep	+1.6	+1.5	+1.7	+1.7	+0.1	*	+0.1	+0.2
	Oct	+1.3	+1.2	+1.4	+1.3	+0.2	+0.2	+0.2	+0.2
	Nov	+1.2	+1.1	+1.3	+1.2	+0.2	+0.2	+0.2	+0.1
	Dec	+1.3	+1.3	+1.4	+1.3	+0.2	+0.2	+0.2	+0.1
2006	Jan	+1.9	+1.6	+2.0	+2.0	+0.1	+0.1	+0.2	+0.1
	Feb	+1.2	+1.1	+1.2	+1.4	+0.1	+0.1	+0.1	+0.1
	Mar	+1.6	+1.4	+1.7	+1.8	+0.1	+0.1	+0.1	+0.1
	Apr	+1.9	+1.7	+2.0	+2.0	+0.2	+0.1	+0.2	+0.2
	May	+2.1	+1.8	+2.2	+2.4	+0.3	+0.2	+0.3	+0.4
	Jun	+2.2	+1.9	+2.2	+2.5	+0.3	+0.3	+0.3	+0.4
	Jul	+2.3	+2.0	+2.4	+2.5	+0.3	+0.2	+0.3	+0.4

* Denotes a figure within $\pm 0.05\%$.

The seasonally adjusted indices are subject to revision up to 3 years after original publication.

- Notes:
- (1) As from the reference month of October 2005 onwards, the year-on-year rates of changes are derived from the new 2004/05-based CPIs. For the earlier months, the year-on-year rates of change are derived from the old 1999/2000-based CPIs
 - (2) In calculating the average monthly rates of change during the latest three months in the seasonally adjusted CPIs, the new 2004/05-based CPIs are used as from the reference month of January 2005 onwards. For the earlier months, the average monthly rates of change during the latest three months are derived from the old 1999/2000-based CPIs
 - (3) The corresponding rates of change derived from the old 1999/2000-based CPIs can be obtained from the Consumer Price Index Section of the Census and Statistics Department at telephone no. 2805 6403 or email address cpi@censtatd.gov.hk

Chart 1 Movements of the Composite Consumer Price Index



Note : The seasonally adjusted indices are subject to revision up to 3 years after original publication.