

Table 1 Consumer Price Indices and Year-on-year Rates of Change
at Section Level for July 2008
(Oct. 2004 - Sep. 2005 = 100)

Section	Composite CPI		CPI(A)		CPI(B)		CPI(C)	
	Index for Jul 2008	% change over Jul 2007	Index for Jul 2008	% change over Jul 2007	Index for Jul 2008	% change over Jul 2007	Index for Jul 2008	% change over Jul 2007
Food	119.0	+11.7	121.1	+13.2	118.1	+11.2	116.9	+9.7
<i>Meals bought away from home</i>	110.9	+6.6	110.5	+6.8	110.7	+6.6	111.9	+6.1
<i>Food, excluding meals bought away from home</i>	132.5	+19.7	135.8	+21.5	131.5	+19.1	127.2	+16.9
Housing #	113.9	+6.7	107.8	+3.6	115.7	+7.2	118.6	+9.5
<i>Private housing rent</i>	118.6	+8.8	116.7	+7.6	119.0	+8.6	120.0	+10.3
<i>Public housing rent</i>	78.1	-13.0	78.1	-13.0	78.2	-12.9	-	-
Electricity, gas and water	109.5	+7.9	109.3	+8.1	109.3	+7.9	109.9	+7.5
Alcoholic drinks and tobacco	95.0	+1.3	95.7	+2.0	94.3	+0.9	94.0	-0.1
Clothing and footwear	103.9	+1.4	106.1	+4.2	105.3	+3.5	100.4	-3.3
Durable goods	86.0	-1.0	84.5	-1.7	83.8	-1.5	89.5	*
Miscellaneous goods	109.9	+5.7	109.7	+6.4	109.9	+5.8	110.2	+5.0
Transport	105.7	+3.9	103.7	+2.2	105.9	+3.8	107.2	+5.4
Miscellaneous services	106.7	+1.3	101.6	-0.7	107.8	+1.9	108.7	+1.9
<i>Selected major groups</i>								
<i>Educational services</i>	100.2	-3.4	96.9	-6.9	100.9	-2.5	101.5	-2.3
<i>Telephone and other communications services</i>	96.1	-1.4	95.7	-1.3	96.2	-1.4	96.9	-1.5
<i>Medical services</i>	107.3	+5.2	106.2	+4.6	107.2	+5.0	108.1	+5.8
All items	110.9	+6.3	110.0	+6.4	111.2	+6.5	111.5	+6.1

* Denotes a figure within $\pm 0.05\%$.

- Not applicable.

Note:

The CPI(A), CPI(B) and CPI(C) are compiled with reference to the average expenditure patterns for different groups of households as obtained from the Household Expenditure Survey. By aggregating the expenditure patterns of all households covered by the above three indices, a Composite CPI is also compiled.

The expenditure ranges of the households covered in the 2004/05-based CPI series are as follows:

	Approximate percentage of households covered	Average monthly household expenditure range (at 2004/05 prices)	Average monthly household expenditure range (adjusted to 2007 prices)
	(%)	(\$)	(\$)
CPI(A)	50	4,000 - 15,499	4,100 - 16,100
CPI(B)	30	15,500 - 27,499	16,100 - 28,900
CPI(C)	10	27,500 - 59,999	28,900 - 63,200
Composite CPI	90	4,000 - 59,999	4,100 - 63,200

Apart from "Private housing rent" and "Public housing rent", the "Housing" section also includes "Management fees and other housing charges" and "Materials for house maintenance".

Table 2 Movements of Consumer Price Indices, July 2006 - July 2008

		CPI			
		Year-on-year rate of change (%)			
<u>Year/month</u>	<u>Composite CPI</u>	<u>CPI(A)</u>	<u>CPI(B)</u>	<u>CPI(C)</u>	
2006 Jul	+2.3	+2.0	+2.4	+2.5	
Aug	+2.5	+2.3	+2.6	+2.6	
Sep	+2.1	+1.9	+2.2	+2.3	
Oct	+2.0	+1.7	+2.1	+2.1	
Nov	+2.2	+1.8	+2.2	+2.6	
Dec	+2.3	+1.9	+2.3	+2.7	
2007 Jan	+2.0	+1.8	+1.9	+2.3	
Feb	+0.8 (+3.1)	-3.2 (+2.6)	+2.1 (+3.2)	+3.6	
Mar	+2.4	+2.2	+2.3	+2.7	
Apr	+1.3 (+2.4)	+0.7 (+2.1)	+1.3 (+2.3)	+1.9 (+2.8)	
May	+1.2 (+2.3)	+0.7 (+2.1)	+1.3 (+2.3)	+1.7 (+2.6)	
Jun	+1.3 (+2.4)	+0.8 (+2.2)	+1.4 (+2.4)	+1.9 (+2.7)	
Jul	+1.5 (+2.6)	+1.0 (+2.4)	+1.6 (+2.6)	+2.1 (+2.9)	
Aug	+1.6 (+2.7)	+0.7 (+2.1)	+1.7 (+2.7)	+2.4 (+3.3)	
Sep	+1.6 (+2.7)	+1.0 (+2.4)	+1.8 (+2.8)	+2.2 (+3.0)	
Oct	+3.2	+2.9	+3.2	+3.5	
Nov	+3.4	+3.1	+3.5	+3.6	
Dec	+3.8	+3.4	+3.9	+4.0	
2008 Jan	+3.2 (+4.3)	+2.9 (+4.2)	+3.3 (+4.4)	+3.5 (+4.3)	
Feb	+6.3 (+5.1)	+9.9 (+5.2)	+5.2 (+5.1)	+3.9 (+4.8)	
Mar	+4.2 (+5.3)	+3.8 (+5.1)	+4.4 (+5.5)	+4.4 (+5.3)	
Apr	+5.4 (+5.4)	+5.5 (+5.5)	+5.5 (+5.5)	+5.2 (+5.3)	
May	+5.7 (+5.7)	+5.6 (+5.6)	+5.8 (+5.8)	+5.5 (+5.6)	
Jun	+6.1 (+6.1)	+6.1 (+6.1)	+6.3 (+6.3)	+5.8 (+5.8)	
Jul	+6.3 (+6.3)	+6.4 (+6.4)	+6.5 (+6.5)	+6.1 (+6.1)	

() Denotes the rate of change upon removing the effects of the following one-off measures : the public housing rental waiver by the Housing Authority and Housing Society in February 2007; the rates concession in April – September 2007, January 2008 – March 2009; and the public housing rental waiver by Housing Society in February 2008.

Table 3 Movements of Seasonally Adjusted Consumer Price Indices, July 2006 - July 2008

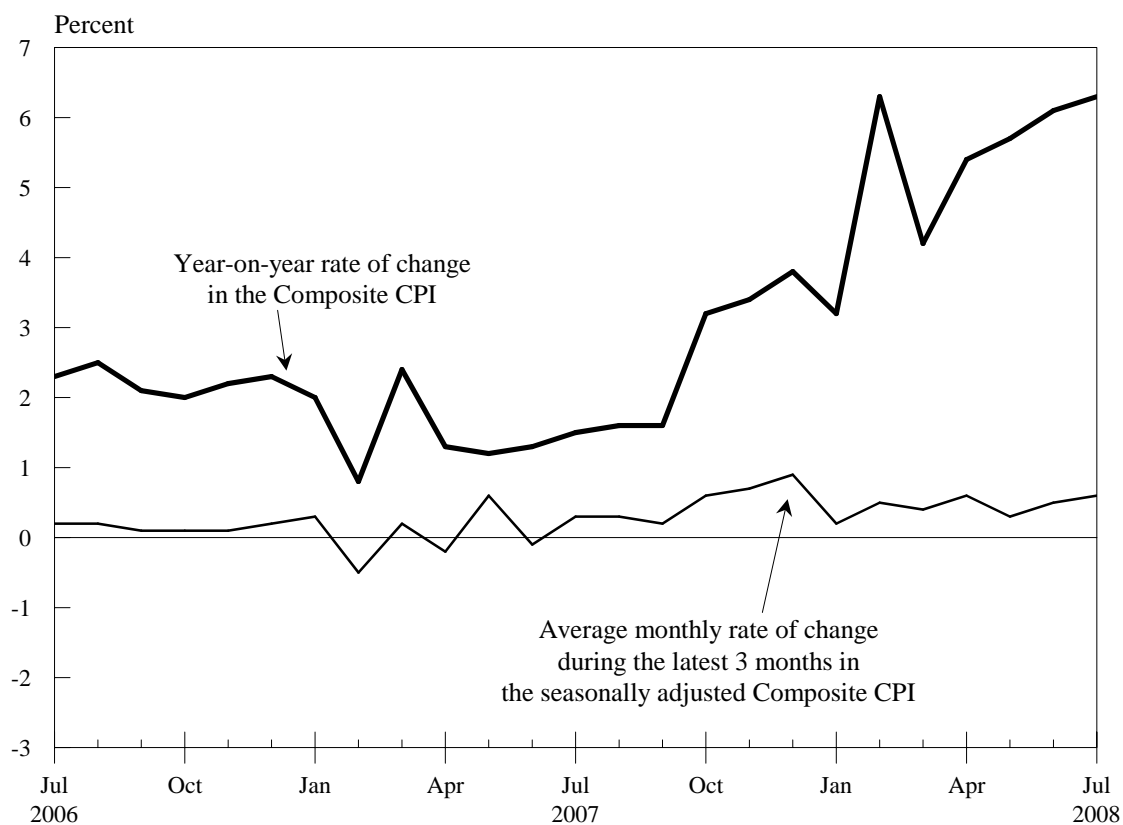
Seasonally adjusted CPI [#]				
Average monthly rate of change during the latest 3 months (%)				
<u>Year/month</u>	<u>Composite CPI</u>	<u>CPI(A)</u>	<u>CPI(B)</u>	<u>CPI(C)</u>
2006 Jul	+0.2	+0.2	+0.2	+0.3
Aug	+0.2	+0.2	+0.2	+0.1
Sep	+0.1	+0.1	+0.1	+0.1
Oct	+0.1	*	+0.1	+0.1
Nov	+0.1	*	+0.1	+0.2
Dec	+0.2	+0.2	+0.2	+0.2
2007 Jan	+0.3	+0.2	+0.2	+0.3
Feb	-0.5 (+0.3)	-1.6 (+0.3)	-0.1 (+0.3)	+0.3
Mar	+0.2	+0.2	+0.2	+0.2
Apr	-0.2 (+0.2)	-0.2 (+0.2)	-0.2 (+0.2)	-0.1 (+0.2)
May	+0.6 (+0.2)	+1.7 (+0.2)	+0.2 (+0.2)	-0.1 (+0.2)
Jun	-0.1 (+0.3)	-0.2 (+0.3)	-0.1 (+0.3)	* (+0.3)
Jul	+0.3 (+0.3)	+0.3 (+0.3)	+0.3 (+0.3)	+0.3 (+0.3)
Aug	+0.3 (+0.3)	+0.2 (+0.2)	+0.3 (+0.3)	+0.4 (+0.4)
Sep	+0.2 (+0.2)	+0.1 (+0.1)	+0.3 (+0.3)	+0.3 (+0.3)
Oct	+0.6 (+0.3)	+0.6 (+0.2)	+0.6 (+0.3)	+0.6 (+0.3)
Nov	+0.7 (+0.4)	+0.8 (+0.4)	+0.7 (+0.4)	+0.6 (+0.3)
Dec	+0.9 (+0.5)	+1.0 (+0.5)	+0.9 (+0.5)	+0.8 (+0.5)
2008 Jan	+0.2 (+0.5)	+0.2 (+0.6)	+0.2 (+0.5)	+0.2 (+0.5)
Feb	+0.5 (+0.9)	+0.5 (+1.0)	+0.5 (+0.9)	+0.5 (+0.8)
Mar	+0.4 (+0.7)	+0.4 (+0.8)	+0.4 (+0.7)	+0.3 (+0.6)
Apr	+0.6 (+0.6)	+0.6 (+0.7)	+0.6 (+0.6)	+0.6 (+0.6)
May	+0.3 (+0.3)	+0.3 (+0.3)	+0.3 (+0.3)	+0.3 (+0.3)
Jun	+0.5 (+0.5)	+0.5 (+0.6)	+0.5 (+0.5)	+0.5 (+0.5)
Jul	+0.6 (+0.6)	+0.6 (+0.6)	+0.6 (+0.6)	+0.6 (+0.6)

* Denotes a figure within $\pm 0.05\%$.

() Denotes the rate of change upon removing the effects of the following one-off measures : the public housing rental waiver by the Housing Authority and Housing Society in February 2007; the rates concession in April – September 2007, January 2008 – March 2009; and the public housing rental waiver by Housing Society in February 2008.

The seasonally adjusted indices are subject to revision up to 3 years after original publication.

Chart 1 Movements of the Composite Consumer Price Index



Note : The seasonally adjusted indices are subject to revision up to 3 years after original publication.