

Table 1 Consumer Price Indices and Year-on-year Rates of Change
at Section Level for July 2009
(Oct. 2004 - Sep. 2005 = 100)

<u>Section</u>	<u>Composite CPI</u>		<u>CPI(A)</u>		<u>CPI(B)</u>		<u>CPI(C)</u>	
	Index for Jul 2009	% change over Jul 2008	Index for Jul 2009	% change over Jul 2008	Index for Jul 2009	% change over Jul 2008	Index for Jul 2009	% change over Jul 2008
Food	118.3	-0.6	120.1	-0.9	117.5	-0.5	116.4	-0.4
<i>Meals bought away from home</i>	111.8	+0.8	111.6	+1.0	111.6	+0.8	112.5	+0.5
<i>Food, excluding meals bought away from home</i>	129.0	-2.6	131.7	-3.0	128.3	-2.4	124.5	-2.1
Housing #	116.9	+2.7	109.9	+1.9	119.0	+2.9	122.5	+3.3
<i>Private housing rent</i>	122.4	+3.2	119.6	+2.5	123.1	+3.4	124.3	+3.5
<i>Public housing rent</i>	78.6	+0.7	78.6	+0.7	78.7	+0.7	-	-
Electricity, gas and water	63.1	-42.3	57.6	-47.3	64.6	-41.0	73.2	-33.4
Alcoholic drinks and tobacco	116.7	+22.8	120.5	+25.9	114.0	+20.9	109.7	+16.7
Clothing and footwear	105.3	+1.3	108.2	+2.0	107.0	+1.6	100.8	+0.4
Durable goods	83.1	-3.4	81.4	-3.7	80.4	-4.0	87.2	-2.6
Miscellaneous goods	111.6	+1.5	111.8	+1.9	111.6	+1.6	111.3	+0.9
Transport	103.2	-2.3	103.2	-0.4	103.3	-2.4	103.0	-3.9
Miscellaneous services	102.6	-3.8	96.8	-4.6	103.8	-3.7	105.1	-3.4
<i>Selected major groups</i>								
<i>Educational services</i>	94.1	-6.1	84.1	-13.3	94.5	-6.3	100.4	-1.1
<i>Telephone and other communications services</i>	92.7	-3.6	92.2	-3.7	92.7	-3.6	93.8	-3.2
<i>Medical services</i>	109.4	+2.0	108.0	+1.6	109.6	+2.2	110.1	+1.9
All items	109.2	-1.5	107.6	-2.2	109.7	-1.4	110.4	-0.9

- Not applicable.

Note:

The CPI(A), CPI(B) and CPI(C) are compiled with reference to the average expenditure patterns for different groups of households as obtained from the Household Expenditure Survey. By aggregating the expenditure patterns of all households covered by the above three indices, a Composite CPI is also compiled.

The expenditure ranges of the households covered in the 2004/05-based CPI series are as follows:

	<u>Approximate percentage of households covered</u>	<u>Average monthly household expenditure range (at 2004/05 prices)</u>	<u>Average monthly household expenditure range (adjusted to 2008 prices)</u>
	(%)	(\$)	(\$)
CPI(A)	50	4,000 - 15,499	4,300 - 16,800
CPI(B)	30	15,500 - 27,499	16,800 - 30,200
CPI(C)	10	27,500 - 59,999	30,200 - 66,100
Composite CPI	90	4,000 - 59,999	4,300 - 66,100

Apart from "Private housing rent" and "Public housing rent", the "Housing" section also includes "Management fees and other housing charges" and "Materials for house maintenance".

Table 2 Movements of Consumer Price Indices, July 2007 - July 2009

<u>Year/month</u>	CPI			
	Year-on-year rate of change (%)			
	<u>Composite CPI</u>	<u>CPI(A)</u>	<u>CPI(B)</u>	<u>CPI(C)</u>
2007 Jul	+1.5 (+2.6)	+1.0 (+2.4)	+1.6 (+2.6)	+2.1 (+2.9)
Aug	+1.6 (+2.7)	+0.7 (+2.1)	+1.7 (+2.7)	+2.4 (+3.3)
Sep	+1.6 (+2.7)	+1.0 (+2.4)	+1.8 (+2.8)	+2.2 (+3.0)
Oct	+3.2	+2.9	+3.2	+3.5
Nov	+3.4	+3.1	+3.5	+3.6
Dec	+3.8	+3.4	+3.9	+4.0
2008 Jan	+3.2 (+4.3)	+2.9 (+4.2)	+3.3 (+4.4)	+3.5 (+4.3)
Feb	+6.3 (+5.1)	+9.9 (+5.2)	+5.2 (+5.1)	+3.9 (+4.8)
Mar	+4.2 (+5.3)	+3.8 (+5.1)	+4.4 (+5.5)	+4.4 (+5.3)
Apr	+5.4 (+5.4)	+5.5 (+5.5)	+5.5 (+5.5)	+5.2 (+5.3)
May	+5.7 (+5.7)	+5.6 (+5.6)	+5.8 (+5.8)	+5.5 (+5.6)
Jun	+6.1 (+6.1)	+6.1 (+6.1)	+6.3 (+6.3)	+5.8 (+5.8)
Jul	+6.3 (+6.3)	+6.4 (+6.4)	+6.5 (+6.5)	+6.1 (+6.1)
Aug	+4.6 (+6.3)	+2.2 (+6.6)	+5.5 (+6.4)	+6.0 (+6.1)
Sep	+3.0 (+6.1)	-0.3 (+6.1)	+4.0 (+6.1)	+5.4 (+6.1)
Oct	+1.8 (+5.9)	-1.7 (+6.0)	+2.8 (+6.0)	+4.3 (+5.9)
Nov	+3.1 (+5.6)	+2.1 (+5.6)	+3.3 (+5.6)	+3.8 (+5.5)
Dec	+2.1 (+4.6)	+1.2 (+4.7)	+2.4 (+4.7)	+2.7 (+4.4)
2009 Jan	+3.1 (+4.5)	+2.1 (+4.2)	+3.4 (+4.7)	+3.7 (+4.5)
Feb	+0.8 (+2.1)	+0.1 (+1.9)	+0.9 (+2.2)	+1.4 (+2.3)
Mar	+1.2 (+2.6)	+0.5 (+2.6)	+1.3 (+2.6)	+1.7 (+2.5)
Apr	+0.6 (+1.9)	-0.2 (+1.7)	+0.9 (+2.0)	+1.2 (+1.9)
May	* (+1.3)	-0.5 (+1.4)	+0.2 (+1.3)	+0.5 (+1.2)
Jun	-0.9 (+0.4)	-1.6 (+0.3)	-0.7 (+0.5)	-0.3 (+0.4)
Jul	-1.5 (-0.3)	-2.2 (-0.3)	-1.4 (-0.2)	-0.9 (-0.3)

* Denotes a figure within $\pm 0.05\%$.

() Denotes the rate of change upon removing the effects of the following Government's one-off relief measures : the public housing rental waiver by the Housing Authority and Housing Society in February 2007; the rates concession of up to \$5,000 per quarter in April – September 2007 and January 2008 – March 2009; the public housing rental waiver by Housing Society in February 2008; Government's payment of public housing rentals in August – October 2008; the suspension of Employees Retraining Levy since August 2008; Government's provision of electricity charge subsidy starting from September 2008; and the rates concession of up to \$1,500 per quarter in April 2009 – March 2010.

Table 3 Movements of Seasonally Adjusted Consumer Price Indices, July 2007 - July 2009

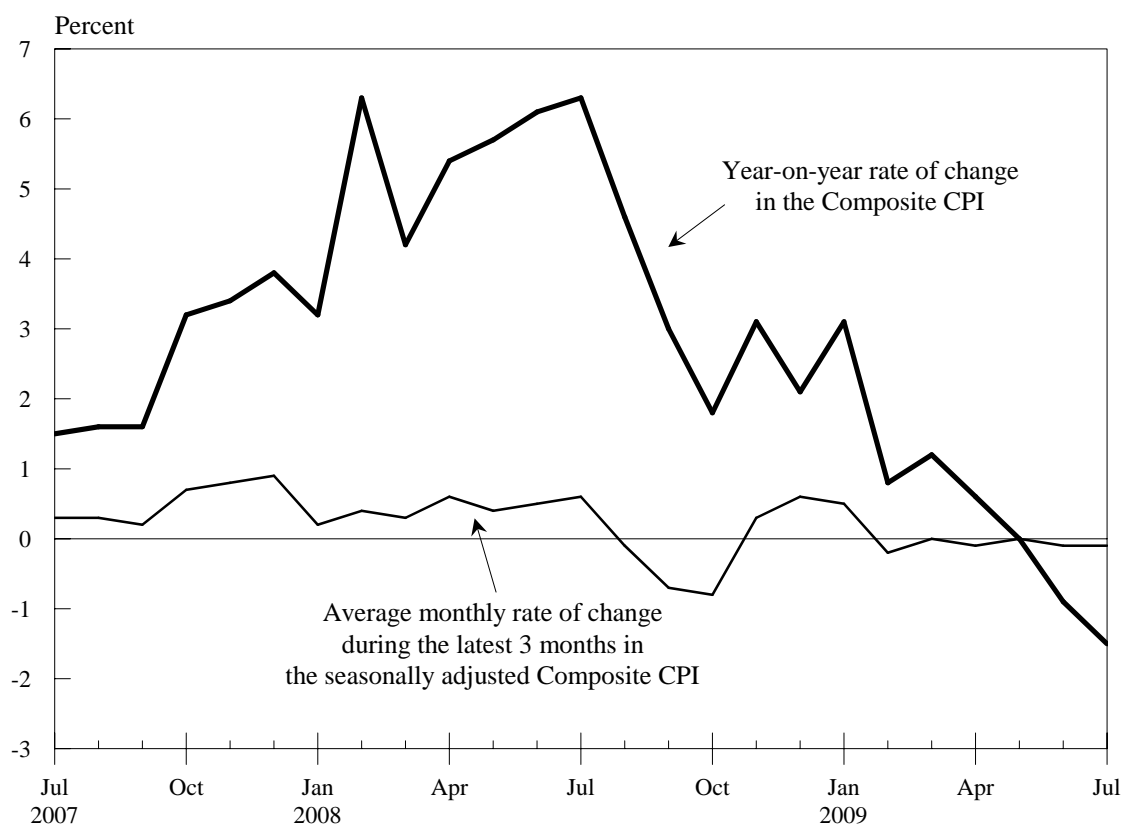
<u>Year/month</u>	Seasonally adjusted CPI [#]			
	Average monthly rate of change during the latest 3 months (%)			
	<u>Composite CPI</u>	<u>CPI(A)</u>	<u>CPI(B)</u>	<u>CPI(C)</u>
2007 Jul	+0.3 (+0.3)	+0.3 (+0.3)	+0.3 (+0.3)	+0.3 (+0.3)
Aug	+0.3 (+0.3)	+0.1 (+0.1)	+0.3 (+0.3)	+0.4 (+0.4)
Sep	+0.2 (+0.2)	+0.1 (+0.1)	+0.3 (+0.3)	+0.3 (+0.3)
Oct	+0.7 (+0.3)	+0.7 (+0.2)	+0.7 (+0.4)	+0.7 (+0.4)
Nov	+0.8 (+0.4)	+0.9 (+0.4)	+0.8 (+0.4)	+0.7 (+0.5)
Dec	+0.9 (+0.5)	+1.0 (+0.5)	+0.9 (+0.5)	+0.8 (+0.5)
2008 Jan	+0.2 (+0.5)	+0.2 (+0.6)	+0.2 (+0.5)	+0.2 (+0.4)
Feb	+0.4 (+0.8)	+0.5 (+1.0)	+0.5 (+0.8)	+0.4 (+0.6)
Mar	+0.3 (+0.7)	+0.3 (+0.8)	+0.3 (+0.6)	+0.3 (+0.6)
Apr	+0.6 (+0.6)	+0.6 (+0.7)	+0.6 (+0.7)	+0.6 (+0.6)
May	+0.4 (+0.3)	+0.3 (+0.3)	+0.4 (+0.4)	+0.4 (+0.4)
Jun	+0.5 (+0.5)	+0.5 (+0.6)	+0.6 (+0.6)	+0.5 (+0.5)
Jul	+0.6 (+0.6)	+0.6 (+0.6)	+0.6 (+0.6)	+0.6 (+0.6)
Aug	-0.1 (+0.5)	-1.0 (+0.4)	+0.2 (+0.4)	+0.5 (+0.5)
Sep	-0.7 (+0.3)	-1.9 (+0.1)	-0.4 (+0.3)	+0.2 (+0.4)
Oct	-0.8 (+0.2)	-1.9 (+0.1)	-0.5 (+0.2)	+0.1 (+0.3)
Nov	+0.3 (+0.2)	+0.9 (+0.1)	+0.1 (+0.2)	+0.1 (+0.3)
Dec	+0.6 (*)	+1.5 (+0.1)	+0.3 (+0.1)	* (*)
2009 Jan	+0.5 (*)	+1.4 (*)	+0.2 (*)	-0.2 (-0.1)
Feb	-0.2 (-0.2)	-0.1 (-0.1)	-0.2 (-0.2)	-0.3 (-0.3)
Mar	* (*)	+0.1 (+0.1)	* (*)	-0.1 (-0.1)
Apr	-0.1 (-0.1)	* (-0.1)	-0.1 (-0.1)	-0.1 (-0.1)
May	* (*)	+0.1 (*)	* (*)	* (-0.1)
Jun	-0.1 (-0.2)	-0.2 (-0.2)	-0.1 (-0.2)	-0.2 (-0.2)
Jul	-0.1 (-0.1)	-0.1 (-0.1)	-0.1 (-0.1)	-0.2 (-0.1)

* Denotes a figure within $\pm 0.05\%$.

() Denotes the rate of change upon removing the effects of the following Government's one-off relief measures : the public housing rental waiver by the Housing Authority and Housing Society in February 2007; the rates concession of up to \$5,000 per quarter in April – September 2007 and January 2008 – March 2009; the public housing rental waiver by Housing Society in February 2008; Government's payment of public housing rentals in August – October 2008; the suspension of Employees Retraining Levy since August 2008; Government's provision of electricity charge subsidy starting from September 2008; and the rates concession of up to \$1,500 per quarter in April 2009 – March 2010.

The seasonally adjusted indices are subject to revision up to 3 years after original publication.

Chart 1 Movements of the Composite Consumer Price Index



Note : The seasonally adjusted indices are subject to revision up to 3 years after original publication.