



Fig 3: The root system was damage, record on Jan 23.



Fig 4: The root system was damage, record on Jan 23.



Fig 5: The root system was damage, record on Jan 23.



Fig 6: The truck and trench, record on Jan 23.



Fig 7: The truck and trench, record on Jan 23.

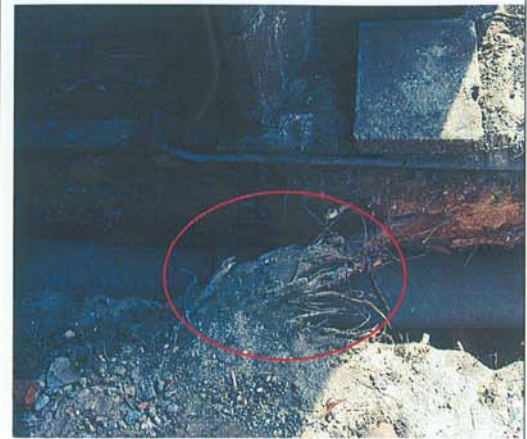





Fig 8: The truck and trench, record on Jan 23.



Fig 9. Heavy duty machine on surface, record on Jan 23.



Fig 10. Bobcat and concrete near trunk, record on Jan 23.

| | | | |
|--|--|--|--|
| |  |  | |
| | <p>Fig 11. Trench backfill soil, record on Jan 24.</p> | <p>Fig 12. Trench backfill soil, record on Jan 24.</p> | |
| |  | | |
| | <p>Fig 13. The surface ground cover was badly mangled, record on Jan 24.</p> | | |

VIII. SIGNATURE

| | | | | | |
|----------|--------------------|------|--|------|-------------|
| YM WU | Qualified Arborist | SIGN |  | DATE | 26 Jan 2010 |
| TC LAM | Associate | SIGN |  | DATE | 26 Jan 2010 |
| ERIC LEE | Consultant | SIGN |  | DATE | 26 Jan 2010 |