

Table 1 Consumer Price Indices and Year-on-year Rates of Change
at Section Level for January 2010
(Oct. 2004 - Sep. 2005 = 100)

Section	Composite CPI		CPI(A)		CPI(B)		CPI(C)	
	Index for Jan 2010	% change over Jan 2009	Index for Jan 2010	% change over Jan 2009	Index for Jan 2010	% change over Jan 2009	Index for Jan 2010	% change over Jan 2009
Food	119.5	-0.5	121.4	-0.7	118.8	-0.4	117.6	-0.4
<i>Meals bought away from home</i>	112.4	+0.3	112.2	+0.5	112.3	+0.4	113.0	-0.2
<i>Food, excluding meals bought away from home</i>	131.4	-1.6	134.0	-2.1	130.7	-1.5	127.1	-0.6
Housing #	117.1	*	110.0	+0.1	119.3	*	122.7	+0.1
<i>Private housing rent</i>	122.6	-0.1	119.9	-0.2	123.3	-0.3	124.5	+0.2
<i>Public housing rent</i>	78.4	+0.6	78.4	+0.6	78.4	+0.6	-	-
Electricity, gas and water	99.0	+56.8	95.7	+65.8	100.7	+56.3	103.0	+41.0
Alcoholic drinks and tobacco	116.8	+22.9	120.7	+25.9	114.1	+21.0	109.6	+16.9
Clothing and footwear	107.6	+2.9	110.2	+2.6	109.2	+2.7	103.5	+3.3
Durable goods	82.1	-2.0	80.3	-2.8	79.4	-2.4	86.3	-0.9
Miscellaneous goods	113.4	+1.9	113.7	+2.1	113.6	+2.1	113.0	+1.6
Transport	103.2	+0.3	103.2	+0.1	103.5	+0.3	102.7	+0.3
Miscellaneous services	103.0	-1.9	97.1	-1.2	104.2	-2.2	105.6	-2.2
<i>Selected major groups</i>								
<i>Educational services</i>	95.1	+0.8	85.0	+0.7	95.3	+0.6	101.8	+1.0
<i>Telephone and other communications services</i>	92.1	-2.0	91.6	-2.1	92.1	-2.0	93.3	-1.8
<i>Medical services</i>	108.9	+1.0	107.5	+0.9	109.3	+1.2	109.5	+0.9
All items	111.1	+1.0	110.1	+1.7	111.5	+0.9	111.7	+0.5

* Denotes a figure within $\pm 0.05\%$.

- Not applicable.

Note:

The CPI(A), CPI(B) and CPI(C) are compiled with reference to the average expenditure patterns for different groups of households as obtained from the Household Expenditure Survey. By aggregating the expenditure patterns of all households covered by the above three indices, a Composite CPI is also compiled.

The expenditure ranges of the households covered in the 2004/05-based CPI series are as follows:

	Approximate percentage of households covered	Average monthly household expenditure range (at 2004/05 prices)	Average monthly household expenditure range (adjusted to 2009 prices)
	(%)	(\$)	(\$)
CPI(A)	50	4,000 - 15,499	4,300 - 16,900
CPI(B)	30	15,500 - 27,499	16,900 - 30,400
CPI(C)	10	27,500 - 59,999	30,400 - 66,500
Composite CPI	90	4,000 - 59,999	4,300 - 66,500

Apart from "Private housing rent" and "Public housing rent", the "Housing" section also includes "Management fees and other housing charges" and "Materials for house maintenance".

Table 2 Movements of Consumer Price Indices, January 2008 - January 2010

<u>Year/month</u>	CPI			
	Year-on-year rate of change (%)			
	<u>Composite CPI</u>	<u>CPI(A)</u>	<u>CPI(B)</u>	<u>CPI(C)</u>
2008 Jan	+3.2 (+4.3)	+2.9 (+4.2)	+3.3 (+4.4)	+3.5 (+4.3)
Feb	+6.3 (+5.1)	+9.9 (+5.2)	+5.2 (+5.1)	+3.9 (+4.8)
Mar	+4.2 (+5.3)	+3.8 (+5.1)	+4.4 (+5.5)	+4.4 (+5.3)
Apr	+5.4 (+5.4)	+5.5 (+5.5)	+5.5 (+5.5)	+5.2 (+5.3)
May	+5.7 (+5.7)	+5.6 (+5.6)	+5.8 (+5.8)	+5.5 (+5.6)
Jun	+6.1 (+6.1)	+6.1 (+6.1)	+6.3 (+6.3)	+5.8 (+5.8)
Jul	+6.3 (+6.3)	+6.4 (+6.4)	+6.5 (+6.5)	+6.1 (+6.1)
Aug	+4.6 (+6.3)	+2.2 (+6.6)	+5.5 (+6.4)	+6.0 (+6.1)
Sep	+3.0 (+6.1)	-0.3 (+6.1)	+4.0 (+6.1)	+5.4 (+6.1)
Oct	+1.8 (+5.9)	-1.7 (+6.0)	+2.8 (+6.0)	+4.3 (+5.9)
Nov	+3.1 (+5.6)	+2.1 (+5.6)	+3.3 (+5.6)	+3.8 (+5.5)
Dec	+2.1 (+4.6)	+1.2 (+4.7)	+2.4 (+4.7)	+2.7 (+4.4)
2009 Jan	+3.1 (+4.5)	+2.1 (+4.2)	+3.4 (+4.7)	+3.7 (+4.5)
Feb	+0.8 (+2.1)	+0.1 (+1.9)	+0.9 (+2.2)	+1.4 (+2.3)
Mar	+1.2 (+2.6)	+0.5 (+2.6)	+1.3 (+2.6)	+1.7 (+2.5)
Apr	+0.6 (+1.9)	-0.2 (+1.7)	+0.9 (+2.0)	+1.2 (+1.9)
May	* (+1.3)	-0.5 (+1.4)	+0.2 (+1.3)	+0.5 (+1.2)
Jun	-0.9 (+0.4)	-1.6 (+0.3)	-0.7 (+0.5)	-0.3 (+0.4)
Jul	-1.5 (-0.3)	-2.2 (-0.3)	-1.4 (-0.2)	-0.9 (-0.3)
Aug	-1.6 (-0.3)	-2.4 (-0.2)	-1.5 (-0.3)	-1.0 (-0.4)
Sep	+0.5 (-0.3)	+0.8 (-0.1)	+0.5 (-0.2)	+0.1 (-0.5)
Oct	+2.2 (-0.3)	+5.2 (-0.2)	+1.3 (-0.3)	+0.1 (-0.4)
Nov	+0.5 (-0.3)	+1.0 (-0.1)	+0.5 (-0.3)	+0.1 (-0.5)
Dec	+1.3 (+0.3)	+1.7 (+0.4)	+1.2 (+0.3)	+0.9 (+0.2)
2010 Jan	+1.0 (*)	+1.7 (+0.2)	+0.9 (-0.1)	+0.5 (-0.2)

* Denotes a figure within $\pm 0.05\%$.

() Denotes the rate of change upon removing the effects of the following Government's one-off relief measures : the public housing rental waiver by the Housing Authority and Housing Society in February 2007; the rates concession of up to \$5,000 per quarter in April – September 2007 and January 2008 – March 2009; the public housing rental waiver by Housing Society in February 2008; Government's payment of public housing rentals in August – October 2008 and August – September 2009; the suspension of Employees Retraining Levy since August 2008; Government's provision of electricity charge subsidy starting from September 2008; and the rates concession of up to \$1,500 per quarter in April 2009 – March 2010.

Table 3 Movements of Seasonally Adjusted Consumer Price Indices, January 2008 - January 2010

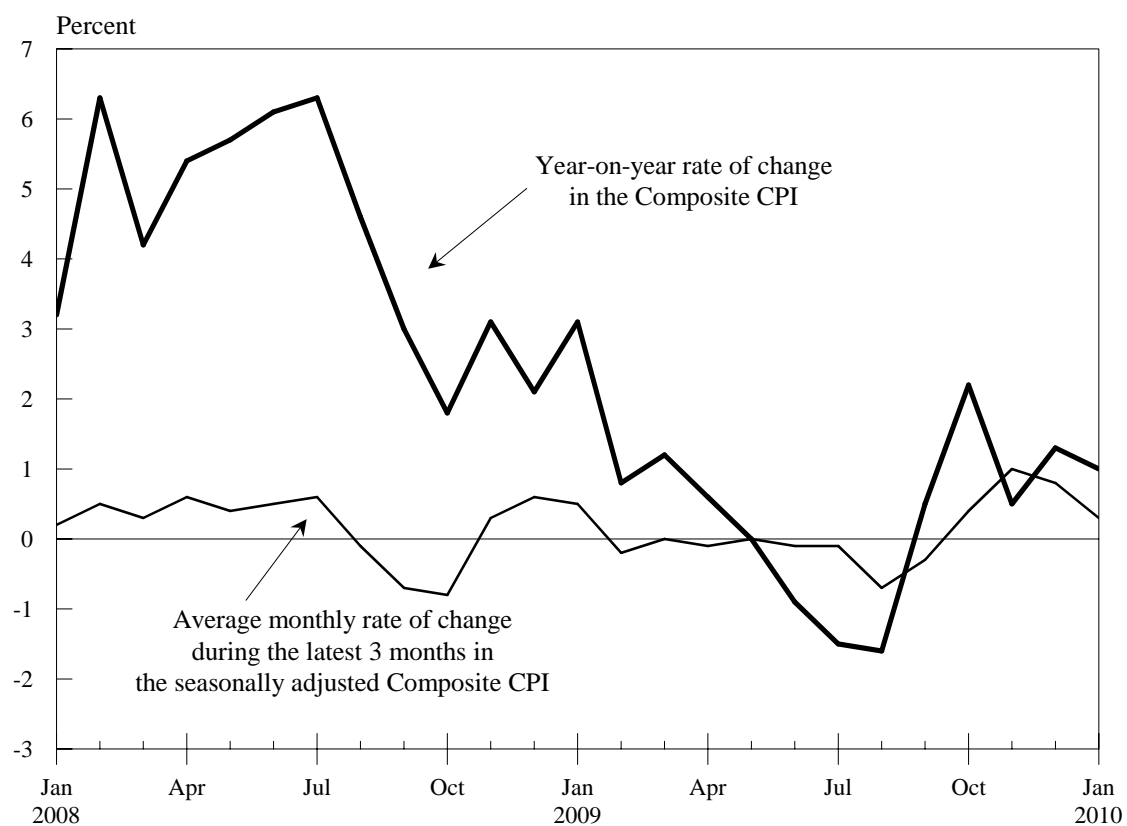
Seasonally adjusted CPI [#]				
Average monthly rate of change during the latest 3 months (%)				
<u>Year/month</u>	<u>Composite CPI</u>	<u>CPI(A)</u>	<u>CPI(B)</u>	<u>CPI(C)</u>
2008 Jan	+0.2 (+0.5)	+0.2 (+0.6)	+0.2 (+0.5)	+0.2 (+0.5)
Feb	+0.5 (+0.9)	+0.5 (+1.0)	+0.5 (+0.9)	+0.4 (+0.7)
Mar	+0.3 (+0.7)	+0.3 (+0.8)	+0.4 (+0.7)	+0.3 (+0.6)
Apr	+0.6 (+0.6)	+0.7 (+0.7)	+0.6 (+0.6)	+0.6 (+0.6)
May	+0.4 (+0.3)	+0.3 (+0.3)	+0.4 (+0.4)	+0.4 (+0.4)
Jun	+0.5 (+0.6)	+0.6 (+0.6)	+0.5 (+0.6)	+0.5 (+0.5)
Jul	+0.6 (+0.6)	+0.6 (+0.6)	+0.6 (+0.6)	+0.6 (+0.6)
Aug	-0.1 (+0.4)	-0.9 (+0.4)	+0.2 (+0.4)	+0.4 (+0.5)
Sep	-0.7 (+0.2)	-1.9 (+0.1)	-0.4 (+0.2)	+0.1 (+0.4)
Oct	-0.8 (+0.2)	-2.0 (+0.1)	-0.5 (+0.2)	* (+0.3)
Nov	+0.3 (+0.2)	+0.8 (+0.1)	+0.1 (+0.2)	* (+0.3)
Dec	+0.6 (*)	+1.4 (*)	+0.3 (+0.1)	* (*)
2009 Jan	+0.5 (*)	+1.4 (*)	+0.3 (*)	-0.1 (-0.1)
Feb	-0.2 (-0.2)	-0.1 (-0.1)	-0.2 (-0.2)	-0.3 (-0.2)
Mar	* (*)	+0.1 (+0.1)	* (*)	-0.1 (-0.1)
Apr	-0.1 (-0.1)	-0.1 (-0.1)	-0.1 (-0.1)	-0.1 (-0.1)
May	* (*)	+0.1 (+0.1)	* (*)	* (-0.1)
Jun	-0.1 (-0.2)	-0.2 (-0.2)	-0.1 (-0.2)	-0.1 (-0.2)
Jul	-0.1 (-0.1)	-0.1 (-0.1)	-0.1 (-0.1)	-0.1 (-0.1)
Aug	-0.7 (-0.1)	-1.6 (-0.1)	-0.4 (-0.1)	-0.1 (-0.1)
Sep	-0.3 (*)	-1.1 (*)	* (*)	+0.2 (+0.1)
Oct	+0.4 (+0.1)	+0.4 (+0.1)	+0.4 (+0.1)	+0.4 (+0.2)
Nov	+1.0 (+0.2)	+2.0 (+0.1)	+0.7 (+0.2)	+0.4 (+0.2)
Dec	+0.8 (+0.2)	+1.7 (+0.2)	+0.5 (+0.2)	+0.2 (+0.2)
2010 Jan	+0.3 (+0.2)	+0.4 (+0.2)	+0.3 (+0.2)	+0.2 (+0.1)

* Denotes a figure within $\pm 0.05\%$.

() Denotes the rate of change upon removing the effects of the following Government's one-off relief measures : the public housing rental waiver by the Housing Authority and Housing Society in February 2007; the rates concession of up to \$5,000 per quarter in April – September 2007 and January 2008 – March 2009; the public housing rental waiver by Housing Society in February 2008; Government's payment of public housing rentals in August – October 2008 and August – September 2009; the suspension of Employees Retraining Levy since August 2008; Government's provision of electricity charge subsidy starting from September 2008; and the rates concession of up to \$1,500 per quarter in April 2009 – March 2010.

The seasonally adjusted indices are subject to revision up to 3 years after original publication.

Chart 1 Movements of the Composite Consumer Price Index



Note : The seasonally adjusted indices are subject to revision up to 3 years after original publication.