



WMO CAeM Home

WMO DRR Home

ADRR Home

SWIC Home

TC Forecast Tracks

TC Strike Probability Map

TCAC Advisories

- TC Advisory (New Delhi)
- TC Advisory (Tokyo)

Satellite Pictures

SIGMET/Advisories

Location-specific products

Significant Weather for PRD Region

Significant Weather for Neighbouring Aerodromes

- Alternate Aerodromes METAR/SPECI/TAF

HKIA and Vicinity

- Weather Summary
- Take-off Forecast
- Significant Convection Forecast
- Probability Wind Forecast
- Aircraft Flight Data

Links

Participants

Disclaimer



This web site is a pilot project developed and maintained by the Hong Kong Observatory of Hong Kong, China for WMO Commission for Aeronautical Meteorology.

Strike Probability Map

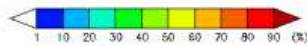
CMA ECMWF

PARMA

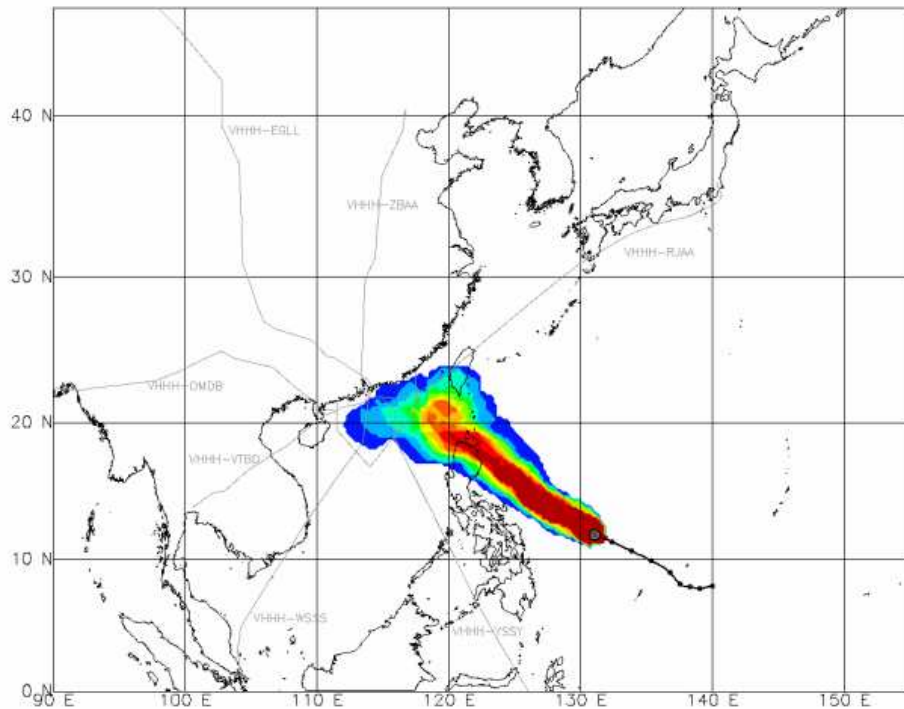
Map with Air-routes & HKFIR boundary Map without Air-routes & HKFIR boundary

Strike Probability Map

PARMA - CMA EPS F/C initialized at 00 UTC, 01 October 2009



— HKO Warning Track



World Meteorological Organization “Aviation-weather Disaster Risk Reduction” (ADRR) website hosted and operated by the Hong Kong Observatory