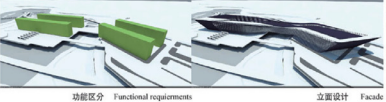
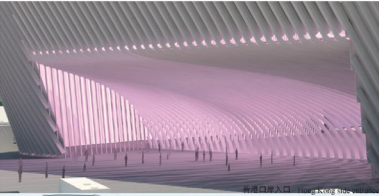
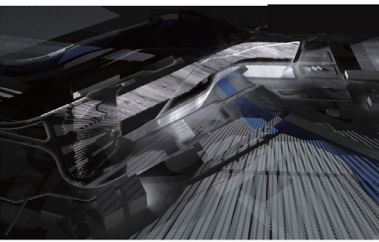


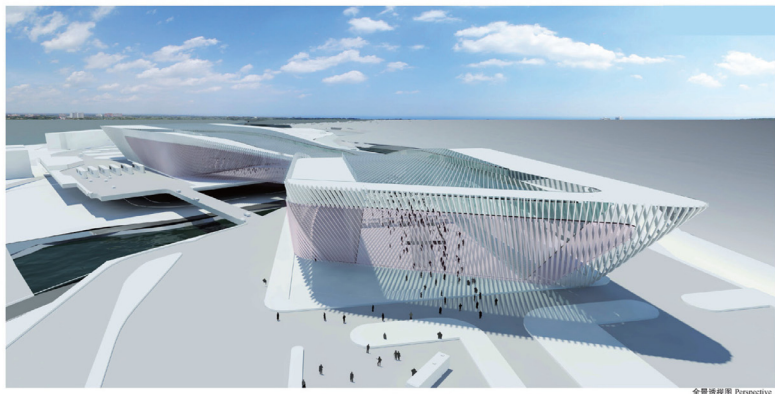
光影.流.岸 FLUID LIGHT STRIPES

本次设计的主要部分为连接香港港口之间的跨海大桥，两岸的人造楼以天桥连接横过深圳河，两岸新有行车天桥将车出入连接与通头之港。
海关的人一般印象是把货物停下来检查的一个私人设施，但我们认为一个高科技的海关应该给旅客舒适而方便的服务。我们的设计主要考虑是使跨海大桥之间连接过道的概念，把流动的方式变为流动的，两岸大桥相连接的天桥就视为是主要的一个部份，流动的形式把跨海大桥从外视以及内部空间都来一个完整的概念。
我们把整个跨海大桥的外墙都用不同形式的桁架作为建筑设计的主题，从内到外的桁架在形式上可以加强“流动”的概念，光与影在桁架板间的互动也是设计的一个重点，而在实际的意义上也更有阳光以及控制湿度作用。

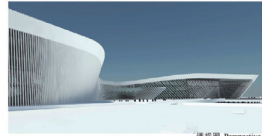
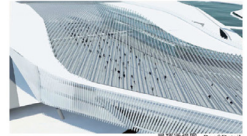
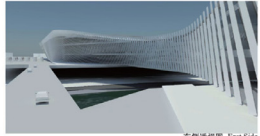
The design of the Passenger Terminal Building (PTB) of Lantau Hong Kong New Boundary Control Point (NBCP) include one pedestrian link and five vehicle bridges crossing Shenzhen River. A new design and "single-oriented" connection with the neighborhood at the building follows the natural form of Shenzhen River. The main pedestrian corridor (transit area) is one continuous space covered with light creating a enjoyable alight space while crossing the border.
The main functional requirements the Shenzhen and Hong Kong side and bridge are creating one continuous single piece of exterior. In the design view of the most important building view, to create an environmental friendly sustainable green building. We used sun shading covering the whole facade according to the sun position and the compare. We try to keep clean and simple the plan, according to the functional requirement. We kept exactly the same traffic circulation as it was in the past line.



功能区分 Functional requirements 立面设计 Facade 出入口意向 In and Out Circulation



全景透视图 Perspective

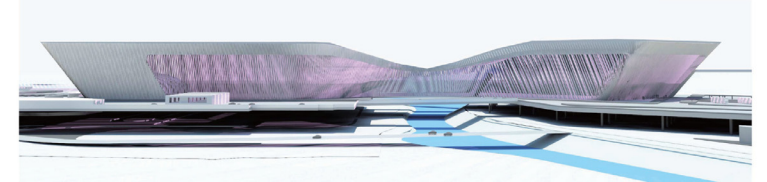


东侧透视图 East Side

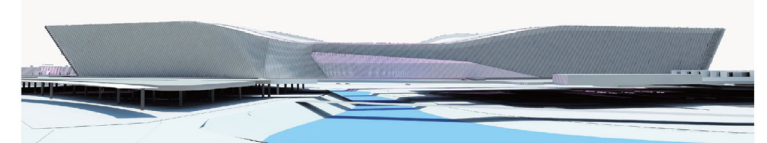
屋顶透视图 Roof Detail

透视图 Perspective

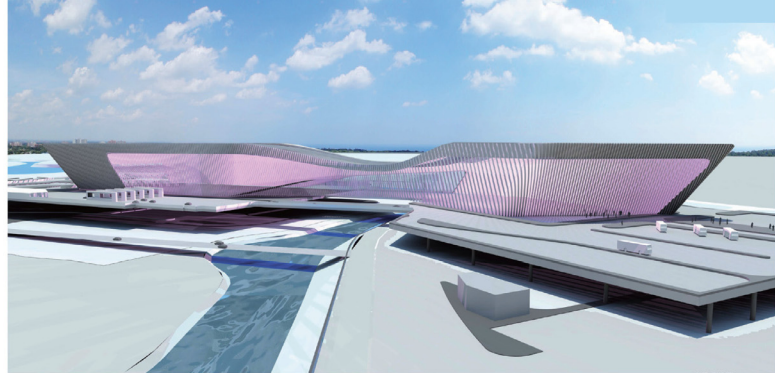
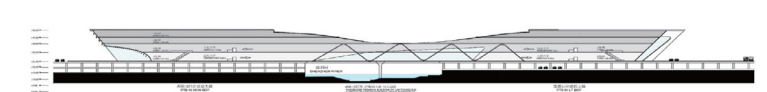
东立面图 东向立面图 East Elevation 东向立面图



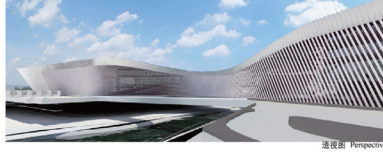
西立面图 西向立面图 West Elevation 西向立面图



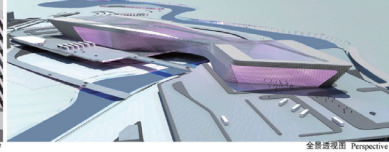
长轴剖面图 Long Section 长轴剖面图



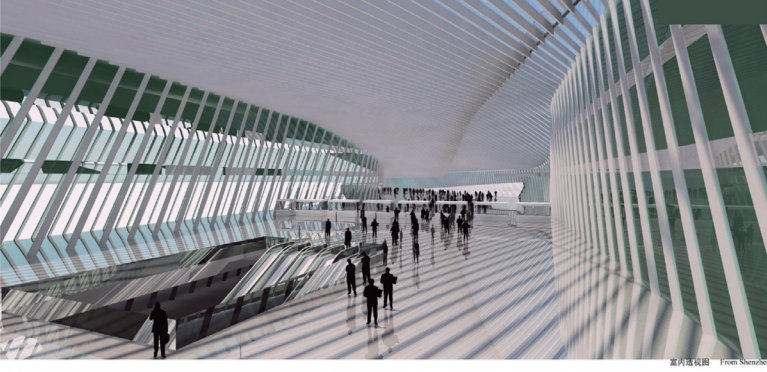
全景透视图 Perspective



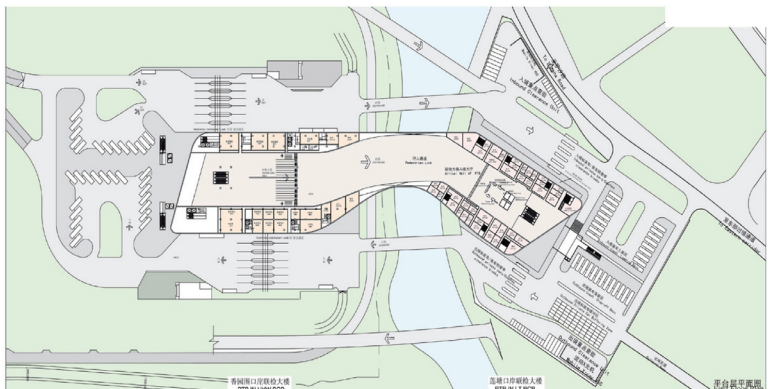
透视图 Perspective



全景透视图 Perspective



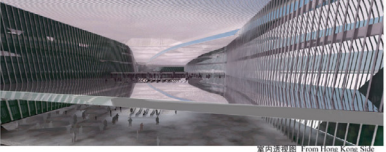
室内透视图 From Shenzhen



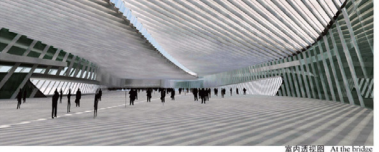
香港新口岸联检大楼 PTB 新 NBCP

高塘口岸联检大楼 PTB 旧 NBCP

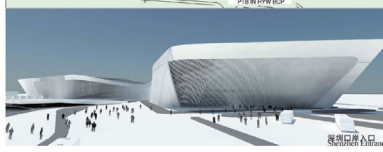
平台桥平面图



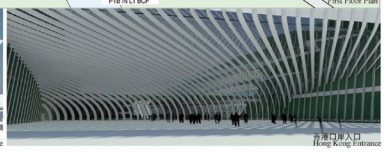
室内透视图 From Hong Kong Side



室内透视图 At the bridge



夜间透视图



香港口岸入口 Hong Kong Entrance