

Table 1 Consumer Price Indices and Year-on-year Rates of Change
at Section Level for October 2014
(Oct. 2009 - Sep. 2010 = 100)

Section	Composite CPI		CPI(A)		CPI(B)		CPI(C)	
	Index for Oct 2014	% change over Oct 2013	Index for Oct 2014	% change over Oct 2013	Index for Oct 2014	% change over Oct 2013	Index for Oct 2014	% change over Oct 2013
Food	125.0	+4.2	126.1	+4.2	125.2	+4.3	122.8	+4.2
<i>Meals bought away from home</i>	123.0	+4.6	123.7	+4.7	123.0	+4.6	121.8	+4.5
<i>Food, excluding meals bought away from home</i>	128.4	+3.6	129.4	+3.5	129.5	+3.7	124.7	+3.5
Housing #	135.8	+8.5	143.9	+11.9	133.9	+7.7	129.1	+5.7
<i>Private housing rent</i>	133.6	+7.1	136.5	+8.2	134.1	+7.4	130.1	+5.6
<i>Public housing rent</i>	186.8	+29.0	186.8	+29.0	187.4	+29.1	-	-
Electricity, gas and water	122.9	+26.1	125.9	+31.4	121.2	+23.7	119.3	+18.0
Alcoholic drinks and tobacco	132.0	+7.5	135.6	+8.2	131.9	+7.5	121.8	+5.5
Clothing and footwear	113.9	-0.6	114.2	-1.0	113.8	-0.9	113.7	*
Durable goods	85.5	-3.6	84.2	-3.9	84.7	-4.0	87.2	-3.0
Miscellaneous goods	112.4	+1.9	113.8	+2.0	112.3	+1.7	111.2	+2.1
Transport	113.5	+1.9	112.3	+2.9	112.7	+1.8	115.3	+1.2
Miscellaneous services	115.1	+2.1	111.7	+2.1	114.8	+2.0	117.6	+2.1
<i>Selected major groups</i>								
<i>Educational services</i>	116.8	+3.6	116.0	+3.5	115.8	+3.4	118.6	+4.0
<i>Information and communications services</i>	98.9	+3.3	99.4	+3.4	98.4	+3.2	98.6	+3.1
<i>Medical services</i>	115.2	+3.0	114.6	+3.0	115.6	+3.1	115.3	+2.8
All items	122.9	+5.2	126.9	+7.1	121.9	+4.7	119.7	+3.6

* Denotes a figure within $\pm 0.05\%$.

- Not applicable.

Note:

The CPI(A), CPI(B) and CPI(C) are compiled with reference to the average expenditure patterns for different groups of households as obtained from the Household Expenditure Survey. By aggregating the expenditure patterns of all households covered by the above three indices, a Composite CPI is also compiled.

The expenditure ranges of the households covered in the 2009/10-based CPI series are as follows:

	Approximate percentage of households covered	Average monthly household expenditure range (at 2009/10 prices)	Average monthly household expenditure range (adjusted to 2013 prices)
	(%)	(\$)	(\$)
CPI(A)	50	4,500 - 18,499	5,200 - 21,400
CPI(B)	30	18,500 - 32,499	21,400 - 37,300
CPI(C)	10	32,500 - 65,999	37,300 - 75,500
Composite CPI	90	4,500 - 65,999	5,200 - 75,500

Apart from "Private housing rent" and "Public housing rent", the "Housing" section also includes "Management fees and other housing charges" and "Materials for house maintenance".

Table 2 Movements of Consumer Price Indices, October 2012 - October 2014

<u>Year/month</u>	<u>CPI</u>			
	<u>Composite CPI</u>	<u>CPI(A)</u>	<u>CPI(B)</u>	<u>CPI(C)</u>
Year-on-year rate of change (%)				
2012 Oct	+3.8 (+3.8)	+4.3 (+4.3)	+3.7 (+3.8)	+3.2 (+3.3)
Nov	+3.7 (+3.8)	+4.2 (+4.2)	+3.6 (+3.7)	+3.3 (+3.4)
Dec	+3.7 (+3.8)	+4.2 (+4.3)	+3.6 (+3.6)	+3.3 (+3.4)
2013 Jan	+3.0 (+3.1)	+3.8 (+3.8)	+2.8 (+2.9)	+2.4 (+2.5)
Feb	+4.4 (+4.4)	+4.7 (+4.7)	+4.2 (+4.2)	+4.2 (+4.3)
Mar	+3.6 (+3.7)	+4.0 (+4.0)	+3.5 (+3.6)	+3.4 (+3.5)
Apr	+4.0 (+3.9)	+4.7 (+4.6)	+3.8 (+3.7)	+3.5 (+3.4)
May	+3.9 (+3.8)	+4.4 (+4.3)	+3.7 (+3.6)	+3.6 (+3.4)
Jun	+4.1 (+4.0)	+4.6 (+4.5)	+3.9 (+3.8)	+3.7 (+3.6)
Jul	+6.9 (+4.2)	+12.0 (+4.8)	+5.0 (+4.0)	+4.0 (+3.9)
Aug	+4.5 (+4.3)	+4.9 (+5.0)	+4.4 (+4.1)	+4.3 (+3.8)
Sep	+4.6 (+4.2)	+5.1 (+4.8)	+4.5 (+4.2)	+4.2 (+3.7)
Oct	+4.3 (+4.0)	+4.5 (+4.4)	+4.4 (+4.1)	+4.1 (+3.6)
Nov	+4.3 (+4.0)	+4.4 (+4.3)	+4.4 (+4.1)	+4.2 (+3.7)
Dec	+4.3 (+3.9)	+4.3 (+4.2)	+4.4 (+4.0)	+4.1 (+3.5)
2014 Jan	+4.6 (+4.3)	+4.5 (+4.3)	+4.8 (+4.5)	+4.5 (+4.0)
Feb	+3.9 (+3.6)	+4.2 (+4.1)	+4.0 (+3.7)	+3.5 (+3.0)
Mar	+3.9 (+3.6)	+4.3 (+4.1)	+3.9 (+3.6)	+3.5 (+3.0)
Apr	+3.7 (+3.5)	+3.9 (+3.8)	+3.8 (+3.6)	+3.5 (+3.1)
May	+3.7 (+3.5)	+3.9 (+3.8)	+3.7 (+3.5)	+3.5 (+3.1)
Jun	+3.6 (+3.4)	+3.7 (+3.7)	+3.6 (+3.4)	+3.5 (+3.1)
Jul	+4.0 (+3.3)	+4.6 (+3.6)	+4.0 (+3.3)	+3.5 (+2.9)
Aug	+3.9 (+3.2)	+4.8 (+3.5)	+3.8 (+3.2)	+3.2 (+2.9)
Sep	+6.6 (+3.3)	+12.3 (+4.0)	+4.7 (+3.2)	+3.1 (+2.8)
Oct	+5.2 (+3.4)	+7.1 (+4.1)	+4.7 (+3.2)	+3.6 (+2.7)

() Denotes the rate of change upon removing the effects of the following Government's one-off relief measures : Government's payment of public housing rentals in July - August 2012, August - September 2013 and August 2014; the public housing rental waiver by Housing Authority in September 2012; the rates concession of up to \$1,500 per quarter in April 2009 - March 2012 and April 2013 - September 2014; the rates concession of up to \$2,500 per quarter in April 2012 - March 2013; Government's provision of electricity charge subsidy (subject to maximum cumulative amount of \$3,600 starting from September 2008, \$1,800 starting from July 2011, \$1,800 starting from July 2012 and \$1,800 starting from July 2013); and the suspension of Employees Retraining Levy in August 2008 - July 2013.

Table 3 Movements of Seasonally Adjusted Consumer Price Indices, October 2012 - October 2014

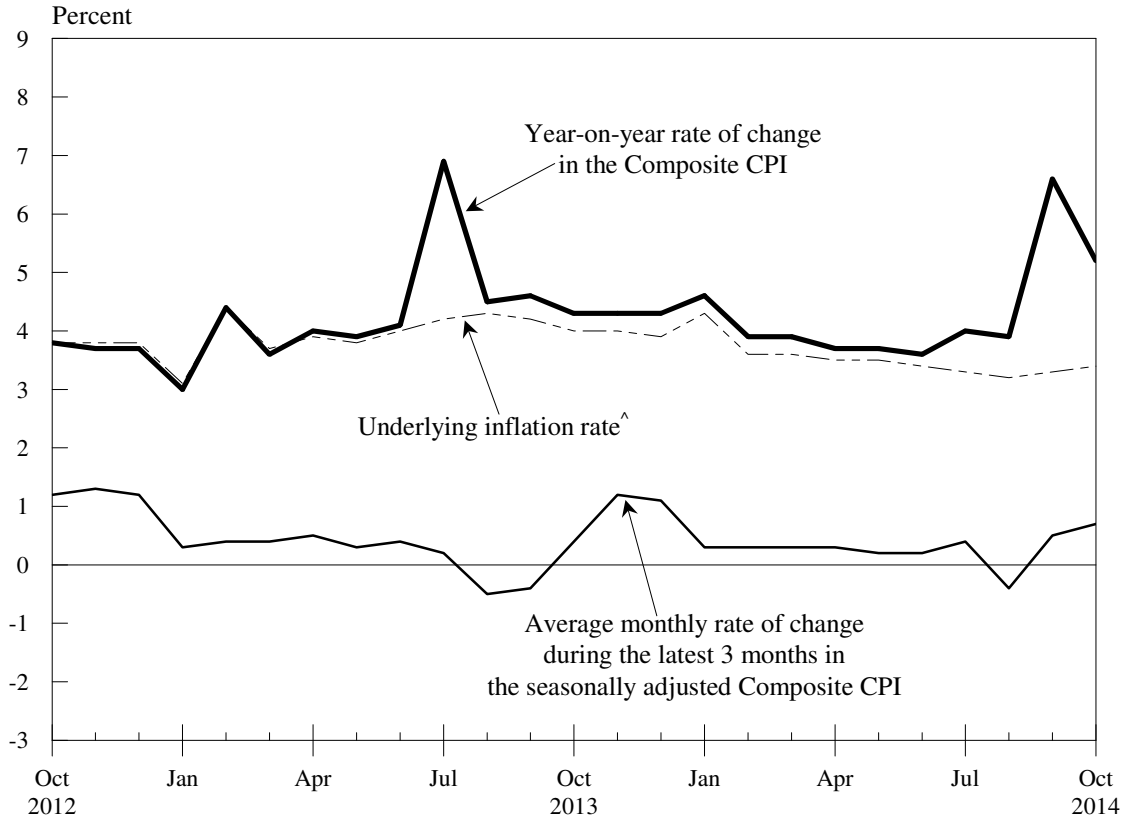
<u>Year/month</u>	Seasonally adjusted CPI [#]			
	Average monthly rate of change during the latest 3 months (%)			
	<u>Composite CPI</u>	<u>CPI(A)</u>	<u>CPI(B)</u>	<u>CPI(C)</u>
2012 Oct	+1.2 (+0.4)	+2.7 (+0.5)	+0.6 (+0.3)	+0.3 (+0.3)
Nov	+1.3 (+0.5)	+2.8 (+0.6)	+0.7 (+0.4)	+0.4 (+0.4)
Dec	+1.2 (+0.3)	+2.7 (+0.4)	+0.6 (+0.3)	+0.3 (+0.3)
2013 Jan	+0.3 (+0.3)	+0.4 (+0.4)	+0.3 (+0.3)	+0.3 (+0.3)
Feb	+0.4 (+0.4)	+0.4 (+0.4)	+0.4 (+0.4)	+0.4 (+0.4)
Mar	+0.4 (+0.3)	+0.3 (+0.3)	+0.4 (+0.4)	+0.4 (+0.4)
Apr	+0.5 (+0.5)	+0.5 (+0.5)	+0.5 (+0.5)	+0.5 (+0.5)
May	+0.3 (+0.3)	+0.3 (+0.3)	+0.4 (+0.3)	+0.3 (+0.3)
Jun	+0.4 (+0.3)	+0.4 (+0.4)	+0.4 (+0.3)	+0.3 (+0.2)
Jul	+0.2 (+0.2)	+0.2 (+0.2)	+0.3 (+0.3)	+0.2 (+0.2)
Aug	-0.5 (+0.3)	-1.9 (+0.3)	* (+0.3)	+0.3 (+0.2)
Sep	-0.4 (+0.4)	-1.8 (+0.4)	+0.1 (+0.4)	+0.4 (+0.3)
Oct	+0.4 (+0.3)	+0.3 (+0.3)	+0.4 (+0.3)	+0.4 (+0.3)
Nov	+1.2 (+0.4)	+2.7 (+0.3)	+0.7 (+0.4)	+0.4 (+0.4)
Dec	+1.1 (+0.2)	+2.5 (+0.2)	+0.6 (+0.3)	+0.3 (+0.3)
2014 Jan	+0.3 (+0.3)	+0.3 (+0.3)	+0.3 (+0.3)	+0.3 (+0.3)
Feb	+0.3 (+0.3)	+0.4 (+0.4)	+0.3 (+0.3)	+0.3 (+0.3)
Mar	+0.3 (+0.3)	+0.3 (+0.3)	+0.3 (+0.3)	+0.2 (+0.2)
Apr	+0.3 (+0.3)	+0.3 (+0.4)	+0.2 (+0.2)	+0.3 (+0.3)
May	+0.2 (+0.2)	+0.2 (+0.2)	+0.2 (+0.2)	+0.2 (+0.2)
Jun	+0.2 (+0.2)	+0.2 (+0.3)	+0.2 (+0.2)	+0.2 (+0.2)
Jul	+0.4 (+0.2)	+0.5 (+0.2)	+0.4 (+0.2)	+0.3 (+0.2)
Aug	-0.4 (+0.2)	-1.6 (+0.2)	+0.1 (+0.2)	+0.2 (+0.1)
Sep	+0.5 (+0.3)	+0.9 (+0.5)	+0.5 (+0.3)	+0.3 (+0.2)
Oct	+0.7 (+0.3)	+1.1 (+0.5)	+0.6 (+0.3)	+0.4 (+0.2)

* Denotes a figure within $\pm 0.05\%$.

() Denotes the rate of change upon removing the effects of the following Government's one-off relief measures : Government's payment of public housing rentals in July - August 2012, August - September 2013 and August 2014; the public housing rental waiver by Housing Authority in September 2012; the rates concession of up to \$1,500 per quarter in April 2013 - September 2014; the rates concession of up to \$2,500 per quarter in April 2012 - March 2013; Government's provision of electricity charge subsidy (subject to maximum cumulative amount of \$3,600 starting from September 2008, \$1,800 starting from July 2011, \$1,800 starting from July 2012 and \$1,800 starting from July 2013); and the suspension of Employees Retraining Levy in August 2008 - July 2013.

The seasonally adjusted indices are subject to revision up to 3 years after original publication.

Chart 1 Movements of the Composite Consumer Price Index



^ Denotes the year-on-year rate of change in the Composite CPI upon removing the effects of the following Government's one-off relief measures: Government's payment of public housing rentals in July to August 2012, August to September 2013 and August 2014; the public housing rental waiver by Housing Authority in September 2012; the rates concession of up to \$1,500 per quarter in April 2009 to March 2012 and April 2013 to September 2014; the rates concession of up to \$2,500 per quarter in April 2012 to March 2013; Government's provision of electricity charge subsidy (subject to a maximum cumulative amount of \$3,600 starting from September 2008, \$1,800 starting from July 2011, \$1,800 starting from July 2012 and \$1,800 starting from July 2013); and the suspension of Employees Retraining Levy in August 2008 to July 2013.

Note : The seasonally adjusted indices are subject to revision up to 3 years after original publication.