

Table 1 Consumer Price Indices and Year-on-year Rates of Change  
at Section Level for March 2016  
(Oct. 2009 - Sep. 2010 = 100)

<u>Section</u>	<u>Composite CPI</u>		<u>CPI(A)</u>		<u>CPI(B)</u>		<u>CPI(C)</u>	
	Index for Mar 2016	% change over Mar 2015	Index for Mar 2016	% change over Mar 2015	Index for Mar 2016	% change over Mar 2015	Index for Mar 2016	% change over Mar 2015
Food	134.3	+4.4	136.0	+4.8	134.1	+4.1	131.5	+4.1
<i>Meals bought away from home</i>	130.6	+3.6	131.6	+3.8	130.6	+3.5	129.1	+3.5
<i>Food, excluding meals bought away from home</i>	140.4	+5.6	141.9	+6.0	140.8	+5.2	136.0	+5.2
Housing #	143.0	+3.8	150.9	+3.4	141.7	+4.2	135.7	+3.6
<i>Private housing rent</i>	141.2	+4.0	145.0	+4.3	142.1	+4.3	136.3	+3.4
<i>Public housing rent</i>	186.9	*	186.8	*	187.5	*	-	-
Electricity, gas and water	122.4	+0.5	126.4	+1.3	119.8	+0.1	117.5	-0.3
Alcoholic drinks and tobacco	131.8	+0.2	135.8	+0.5	131.9	+0.3	119.6	-1.1
Clothing and footwear	106.4	-3.7	105.9	-5.1	105.3	-5.0	107.8	-1.3
Durable goods	78.6	-5.1	77.9	-4.7	77.8	-5.1	80.0	-5.3
Miscellaneous goods	113.7	+1.1	115.4	+1.3	113.5	+1.2	112.3	+0.7
Transport	112.7	+1.0	113.3	+1.9	112.3	+1.2	112.6	+0.2
Miscellaneous services	118.4	+3.7	114.8	+2.7	117.8	+3.3	121.4	+4.7
<i>Selected major groups</i>								
<i>Educational services</i>	121.8	+4.1	120.6	+3.8	120.4	+3.7	124.5	+4.6
<i>Information and communications services</i>	96.4	-1.8	96.9	-1.9	95.9	-1.8	96.2	-1.7
<i>Medical services</i>	123.1	+4.8	122.8	+5.0	123.9	+4.9	122.5	+4.6
<b>All items</b>	<b>127.6</b>	<b>+3.0</b>	<b>132.6</b>	<b>+3.1</b>	<b>126.5</b>	<b>+2.9</b>	<b>123.4</b>	<b>+2.8</b>

\* Denotes a figure within  $\pm 0.05\%$ .

- Not applicable.

Note:

The CPI(A), CPI(B) and CPI(C) are compiled with reference to the average expenditure patterns for different groups of households as obtained from the Household Expenditure Survey. By aggregating the expenditure patterns of all households covered by the above three indices, a Composite CPI is also compiled.

The expenditure ranges of the households covered in the 2009/10-based CPI series are as follows:

	<u>Approximate percentage of households covered</u>	<u>Average monthly household expenditure range (at 2009/10 prices)</u>	<u>Average monthly household expenditure range (adjusted to 2015 prices)</u>
	(%)	(\$)	(\$)
CPI(A)	50	4,500 - 18,499	5,600 - 22,800
CPI(B)	30	18,500 - 32,499	22,800 - 39,400
CPI(C)	10	32,500 - 65,999	39,400 - 79,200
Composite CPI	90	4,500 - 65,999	5,600 - 79,200

# Apart from "Private housing rent" and "Public housing rent", the "Housing" section also includes "Management fees and other housing charges" and "Materials for house maintenance".

Table 2 Movements of Consumer Price Indices, March 2014 - March 2016

<u>Year/month</u>	CPI			
	Year-on-year rate of change (%)			
	<u>Composite CPI</u>	<u>CPI(A)</u>	<u>CPI(B)</u>	<u>CPI(C)</u>
2014 Mar	+3.9 (+3.6)	+4.3 (+4.1)	+3.9 (+3.6)	+3.5 (+3.0)
Apr	+3.7 (+3.5)	+3.9 (+3.8)	+3.8 (+3.6)	+3.5 (+3.1)
May	+3.7 (+3.5)	+3.9 (+3.8)	+3.7 (+3.5)	+3.5 (+3.1)
Jun	+3.6 (+3.4)	+3.7 (+3.7)	+3.6 (+3.4)	+3.5 (+3.1)
Jul	+4.0 (+3.3)	+4.6 (+3.6)	+4.0 (+3.3)	+3.5 (+2.9)
Aug	+3.9 (+3.2)	+4.8 (+3.5)	+3.8 (+3.2)	+3.2 (+2.9)
Sep	+6.6 (+3.3)	+12.3 (+4.0)	+4.7 (+3.2)	+3.1 (+2.8)
Oct	+5.2 (+3.4)	+7.1 (+4.1)	+4.7 (+3.2)	+3.6 (+2.7)
Nov	+5.1 (+3.3)	+7.2 (+4.1)	+4.6 (+3.1)	+3.4 (+2.6)
Dec	+4.9 (+3.1)	+6.9 (+3.9)	+4.4 (+2.9)	+3.2 (+2.4)
2015 Jan	+4.1 (+2.3)	+6.3 (+3.3)	+3.6 (+2.1)	+2.2 (+1.4)
Feb	+4.6 (+2.8)	+6.5 (+3.5)	+4.2 (+2.7)	+3.0 (+2.2)
Mar	+4.5 (+2.8)	+6.6 (+3.6)	+4.1 (+2.6)	+2.8 (+1.9)
Apr	+2.8 (+2.4)	+3.9 (+3.0)	+2.6 (+2.3)	+1.9 (+1.7)
May	+3.0 (+2.6)	+4.2 (+3.3)	+2.8 (+2.5)	+2.0 (+1.9)
Jun	+3.1 (+2.6)	+4.4 (+3.4)	+2.9 (+2.5)	+2.0 (+1.9)
Jul	+2.5 (+2.6)	+3.4 (+3.4)	+2.4 (+2.5)	+1.8 (+1.9)
Aug	+2.4 (+2.6)	+3.0 (+3.2)	+2.4 (+2.5)	+1.8 (+2.0)
Sep	+2.0 (+2.1)	+2.1 (+2.1)	+2.1 (+2.2)	+1.8 (+1.9)
Oct	+2.4 (+2.3)	+2.6 (+2.5)	+2.4 (+2.4)	+2.0 (+2.0)
Nov	+2.4 (+2.4)	+2.6 (+2.5)	+2.5 (+2.5)	+2.1 (+2.1)
Dec	+2.5 (+2.4)	+2.7 (+2.6)	+2.5 (+2.5)	+2.1 (+2.1)
2016 Jan	+2.7 (+2.6)	+2.9 (+2.8)	+2.6 (+2.6)	+2.4 (+2.4)
Feb	+3.1 (+3.1)	+3.6 (+3.6)	+3.0 (+3.0)	+2.6 (+2.6)
Mar	+3.0 (+2.9)	+3.1 (+3.0)	+2.9 (+2.9)	+2.8 (+2.8)

( ) Denotes the rate of change upon removing the effects of the following Government's one-off relief measures : Government's payment of public housing rentals in August - September 2013, August 2014 and August 2015; the rates concession of up to \$1,500 per quarter in April 2013 - September 2014; the rates concession of up to \$2,500 per quarter in April 2012 - March 2013 and April - September 2015; Government's provision of electricity charge subsidy (subject to maximum cumulative amount of \$3,600 starting from September 2008, \$1,800 starting from July 2011, \$1,800 starting from July 2012 and \$1,800 starting from July 2013); and the suspension of Employees Retraining Levy in August 2008 - July 2013.

Table 3 Movements of Seasonally Adjusted Consumer Price Indices, March 2014 - March 2016

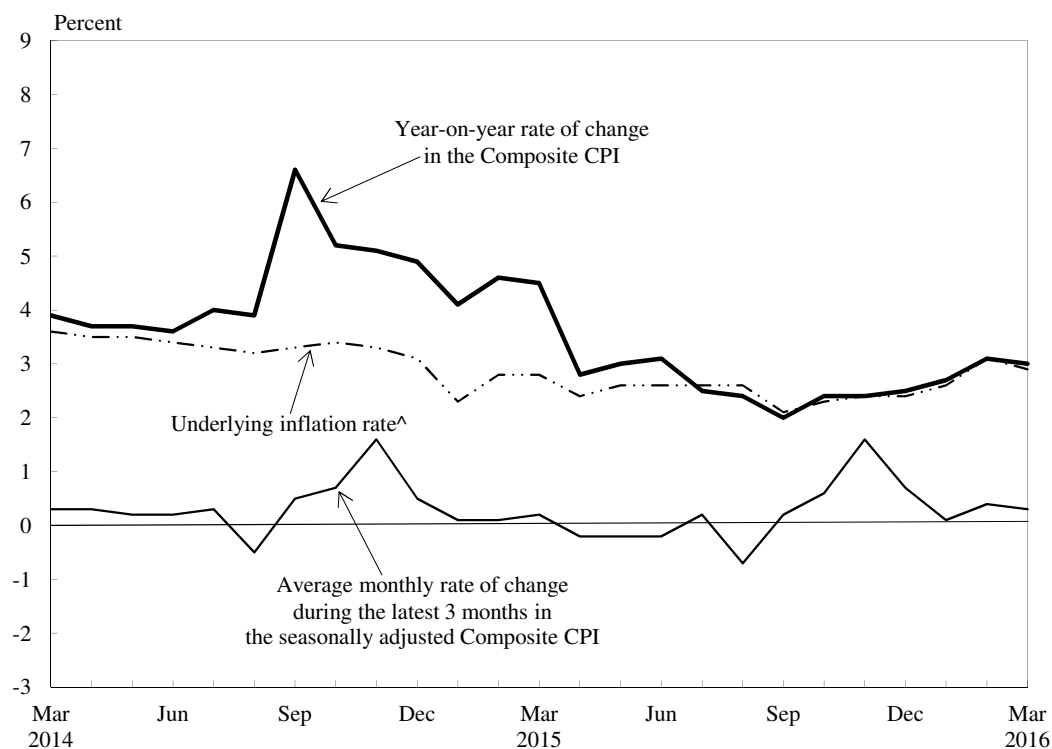
<u>Year/month</u>	Seasonally adjusted CPI <sup>#</sup>			
	Average monthly rate of change during the latest 3 months (%)			
	<u>Composite CPI</u>	<u>CPI(A)</u>	<u>CPI(B)</u>	<u>CPI(C)</u>
2014 Mar	+0.3 (+0.3)	+0.3 (+0.3)	+0.3 (+0.3)	+0.3 (+0.3)
Apr	+0.3 (+0.3)	+0.4 (+0.4)	+0.3 (+0.3)	+0.3 (+0.3)
May	+0.2 (+0.2)	+0.2 (+0.2)	+0.2 (+0.2)	+0.3 (+0.2)
Jun	+0.2 (+0.2)	+0.2 (+0.3)	+0.2 (+0.2)	+0.2 (+0.2)
Jul	+0.3 (+0.1)	+0.5 (+0.2)	+0.3 (+0.2)	+0.2 (+0.1)
Aug	-0.5 (+0.1)	-1.6 (+0.2)	* (+0.2)	+0.2 (+0.1)
Sep	+0.5 (+0.3)	+0.9 (+0.5)	+0.5 (+0.3)	+0.2 (+0.1)
Oct	+0.7 (+0.3)	+1.1 (+0.5)	+0.6 (+0.3)	+0.4 (+0.2)
Nov	+1.6 (+0.4)	+3.4 (+0.5)	+0.9 (+0.3)	+0.4 (+0.3)
Dec	+0.5 (+0.2)	+0.8 (+0.2)	+0.5 (+0.2)	+0.3 (+0.1)
2015 Jan	+0.1 (+0.1)	+0.1 (+0.1)	+0.1 (+0.1)	* ( * )
Feb	+0.1 (+0.1)	+0.2 (+0.2)	+0.1 (+0.1)	* ( * )
Mar	+0.2 (+0.2)	+0.2 (+0.2)	+0.2 (+0.2)	+0.1 (+0.1)
Apr	-0.2 (+0.2)	-0.4 (+0.2)	-0.2 (+0.2)	* (+0.2)
May	-0.2 (+0.2)	-0.5 (+0.2)	-0.1 (+0.2)	+0.1 (+0.3)
Jun	-0.2 (+0.2)	-0.5 (+0.2)	-0.2 (+0.2)	* (+0.2)
Jul	+0.2 (+0.2)	+0.3 (+0.3)	+0.2 (+0.2)	+0.2 (+0.2)
Aug	-0.7 (+0.2)	-2.0 (+0.2)	-0.1 (+0.2)	+0.1 (+0.1)
Sep	+0.2 (+0.2)	+0.1 (+0.1)	+0.2 (+0.2)	+0.2 (+0.2)
Oct	+0.6 (+0.2)	+0.9 (+0.2)	+0.6 (+0.2)	+0.4 (+0.2)
Nov	+1.6 (+0.3)	+3.2 (+0.3)	+0.9 (+0.3)	+0.5 (+0.3)
Dec	+0.7 (+0.3)	+1.0 (+0.3)	+0.6 (+0.3)	+0.4 (+0.2)
2016 Jan	+0.1 (+0.1)	+0.2 (+0.2)	+0.1 (+0.1)	+0.1 (+0.1)
Feb	+0.4 (+0.4)	+0.5 (+0.5)	+0.3 (+0.3)	+0.3 (+0.3)
Mar	+0.3 (+0.3)	+0.3 (+0.3)	+0.3 (+0.3)	+0.3 (+0.3)

\* Denotes a figure within  $\pm 0.05\%$ .

( ) Denotes the rate of change upon removing the effects of the following Government's one-off relief measures : Government's payment of public housing rentals in August 2014 and August 2015; the rates concession of up to \$1,500 per quarter in April 2013 - September 2014; the rates concession of up to \$2,500 per quarter in April - September 2015; and Government's provision of electricity charge subsidy (subject to maximum cumulative amount of \$3,600 starting from September 2008, \$1,800 starting from July 2011, \$1,800 starting from July 2012 and \$1,800 starting from July 2013).

# The seasonally adjusted indices are subject to revision up to 3 years after original publication.

Chart 1 Movements of the Composite Consumer Price Index



^ Denotes the year-on-year rate of change in the Composite CPI upon removing the effects of the following Government's one-off relief measures: Government's payment of public housing rentals in August to September 2013, August 2014 and August 2015; the rates concession of up to \$1,500 per quarter in April 2013 to September 2014; the rates concession of up to \$2,500 per quarter in April 2012 to March 2013 and April to September 2015; Government's provision of electricity charge subsidy (subject to a maximum cumulative amount of \$3,600 starting from September 2008, \$1,800 starting from July 2011, \$1,800 starting from July 2012 and \$1,800 starting from July 2013); and the suspension of Employees Retraining Levy in August 2008 to July 2013.

Note : The seasonally adjusted indices are subject to revision up to 3 years after original publication.