

Last hour rainfall at **07:00H 10-May-2016** (based on raingauges and radar data)

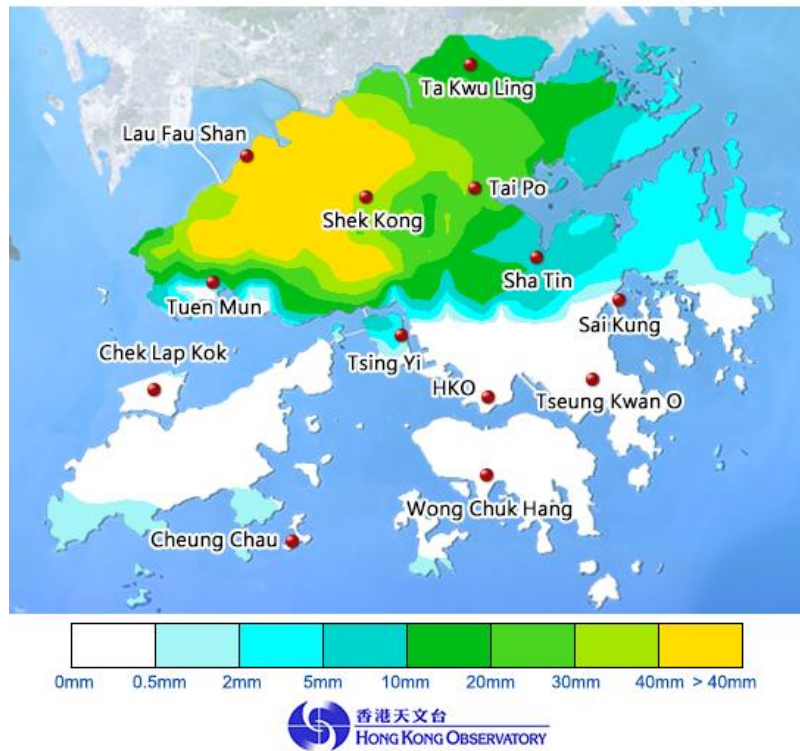


Figure 1 Rainfall distribution map for the hour ending 7:00 a.m.

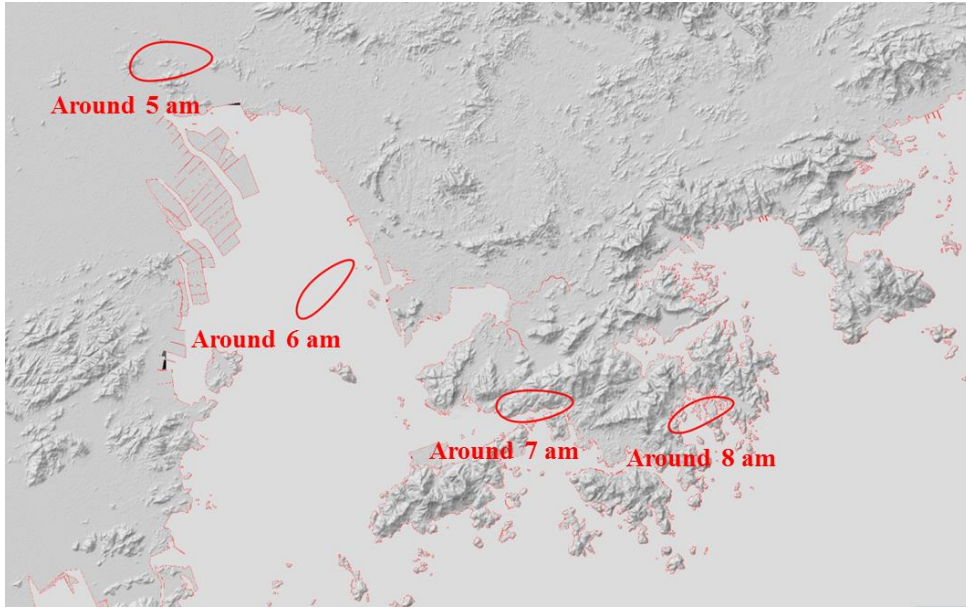


Figure 2 Track of the most intense rain area during the first rain episode. Rain area slowed down between 7 a.m. and 8 a.m..

Last hour rainfall at **07:30H 10-May-2016** (based on raingauges and radar data)

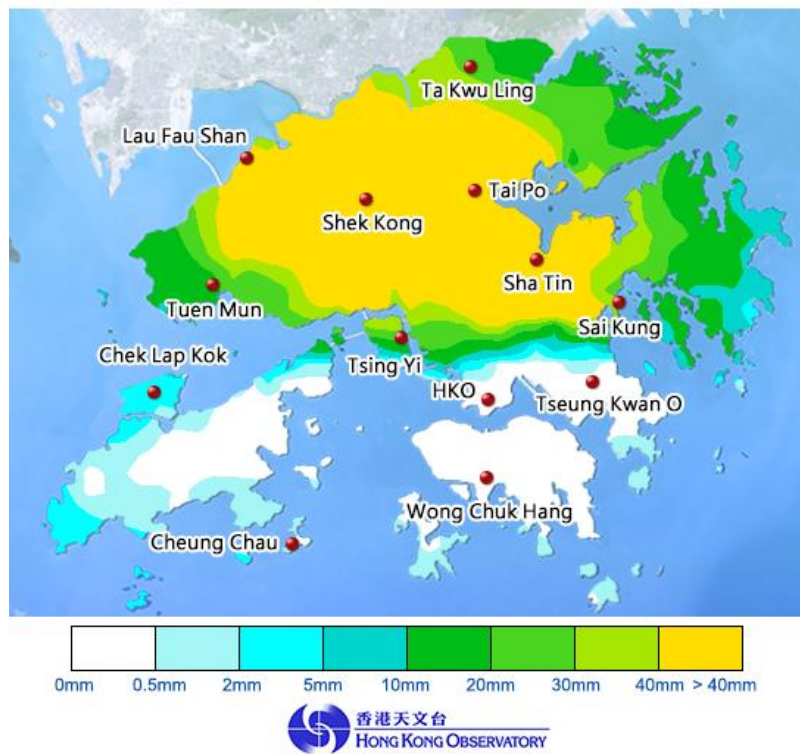


Figure 3 Rainfall distribution map for the hour ending 7:30 a.m.

Last hour rainfall at **08:00H 10-May-2018** (based on raingauges and radar data)

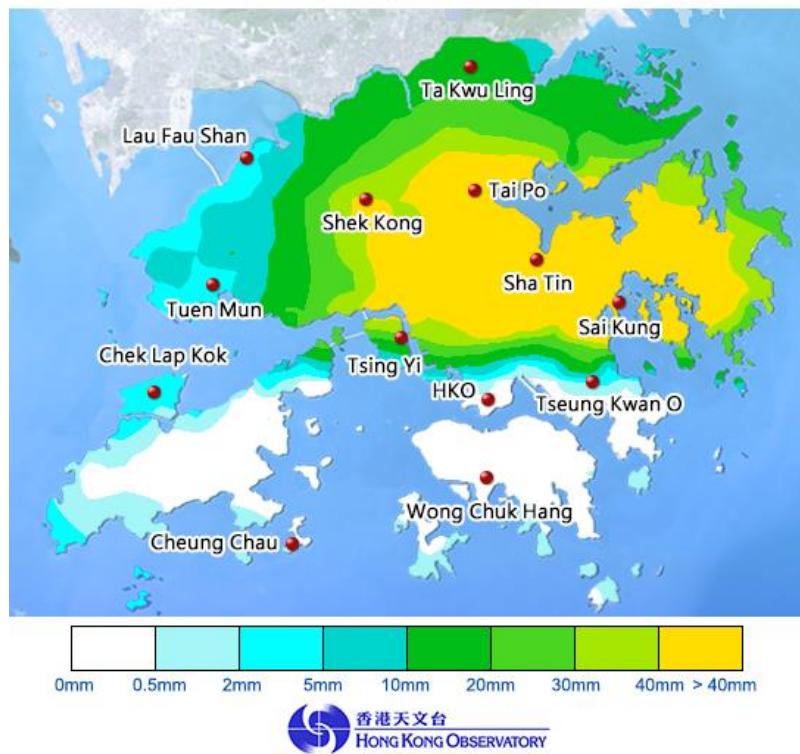


Figure 4 Rainfall distribution map for the hour ending 8:00 a.m.

Last hour rainfall at **12:00H 10-May-2018** (based on raingauges and radar data)

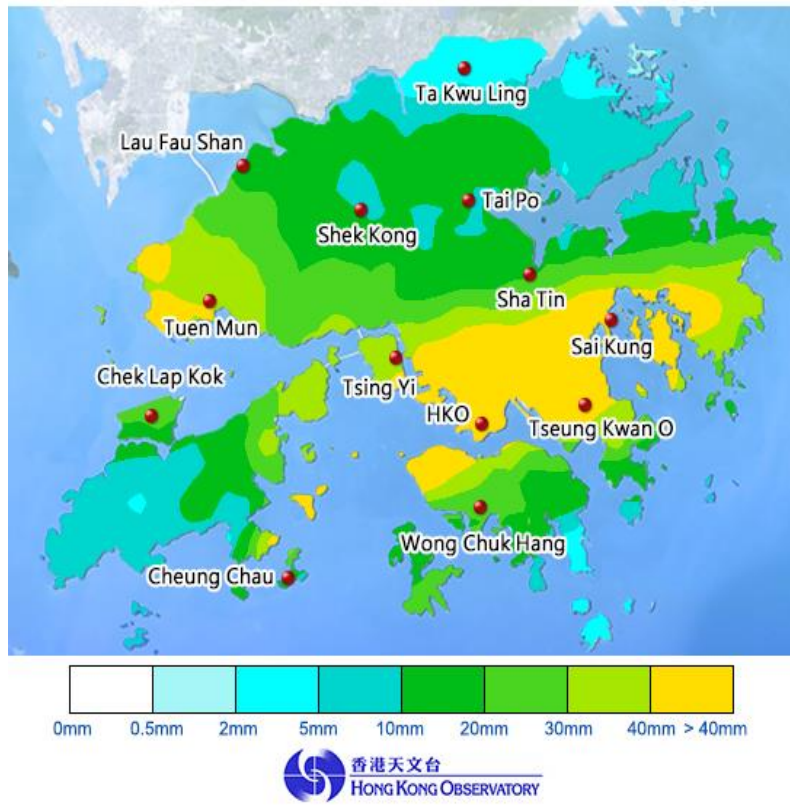


Figure 5 Rainfall distribution map for the hour ending 12:00 noon

Last hour rainfall at **13:00H 10-May-2016** (based on raingauges and radar data)

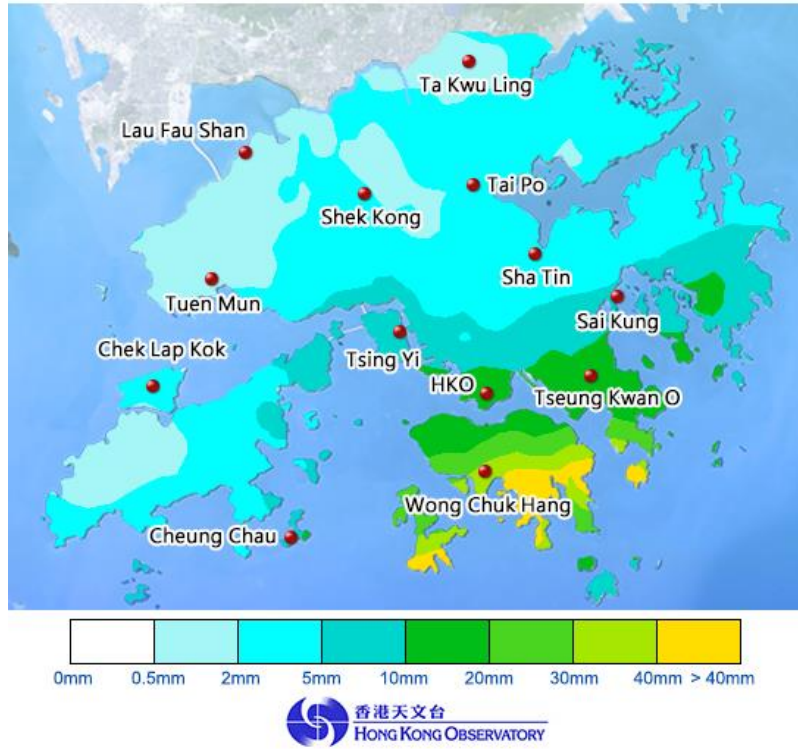


Figure 6 Rainfall distribution map for the hour ending 1:00 p.m.