

Arrangements for lane closure on an expressway

The following figure shows the typical signs (including advance warning signs, cones and flashing arrow signs, etc.) used during lane closure on an expressway (see **Figure**). The Code stipulates that, when carrying out maintenance works on expressways with lane closure, advance warning signs shall be displayed at least 600 metres in advance of the works area. Flashing arrow signs shall also be displayed where temporary diversion begins. The detailed display requirements of advance warning signs and cones can be found in the Code. A flashing arrow sign has a matrix of individual lights that can flash on and off in a predetermined manner to show signs such as “arrow to the right” or “arrow to the left”. When there are stationary or slowly-moving works vehicles on an expressway, it must be used to warn drivers to take special care. The mounting height of flashing arrow sign should not be less than 3.3 m in order to provide advance warning.

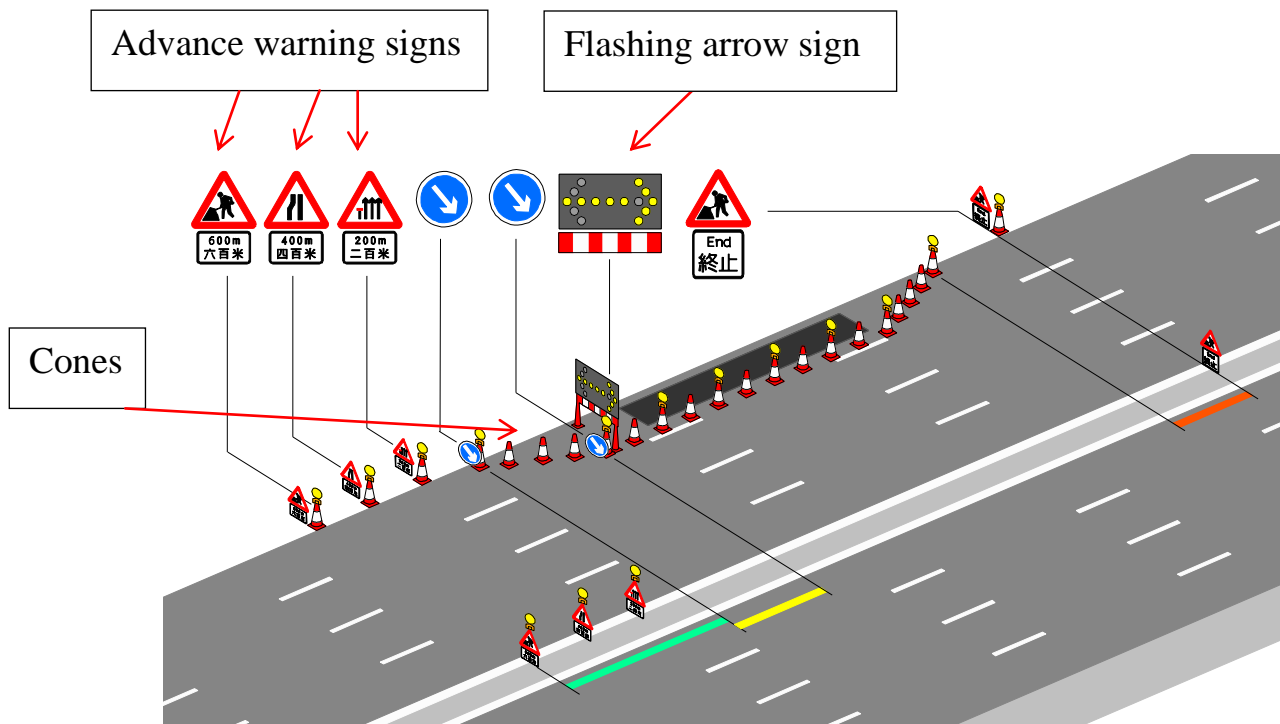


Figure: Advance warning signs, cones and flashing arrow signs