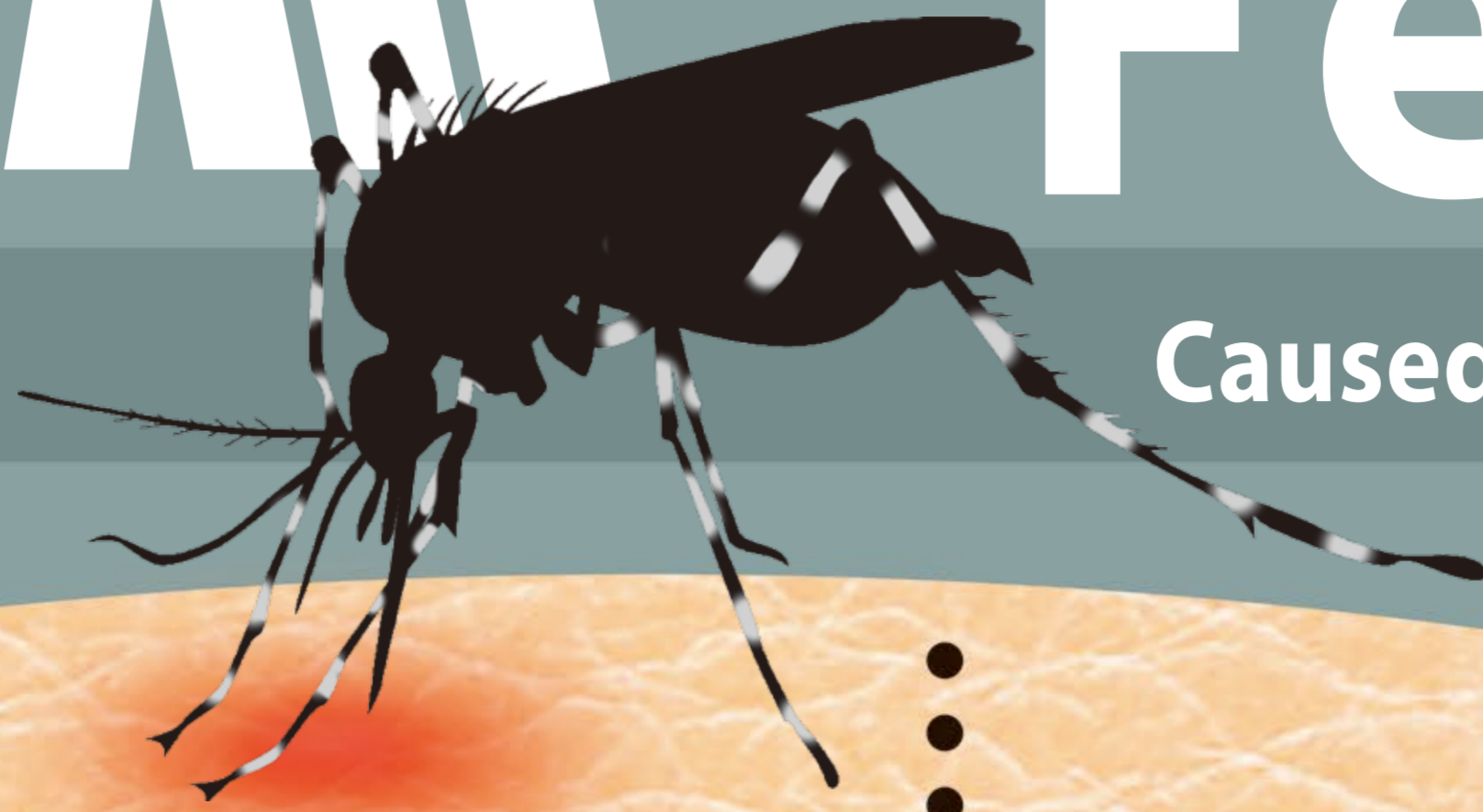


登革熱 Dengue Fever

由登革熱病毒引起

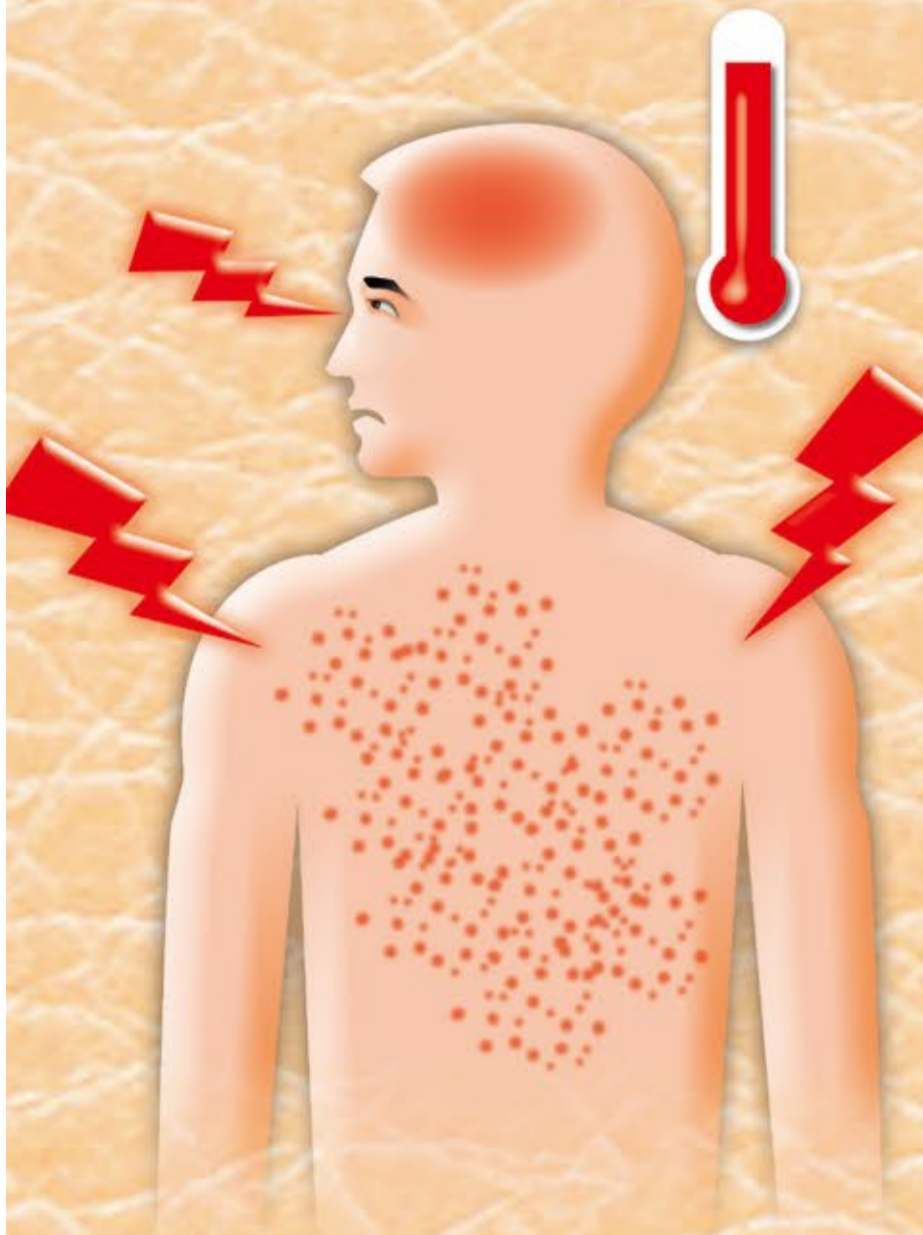
Caused by Dengue viruses



病徵 Symptoms

高燒、嚴重頭痛、眼窩後疼痛、肌肉及關節痛、嘔心、嘔吐、淋巴結腫脹以及出疹

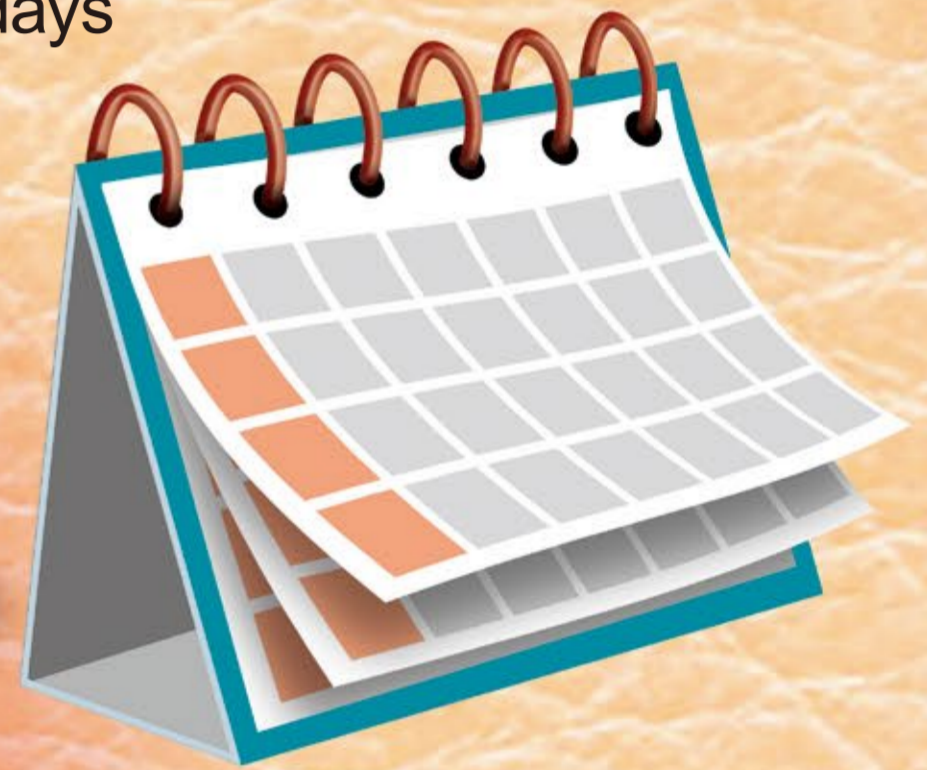
High fever, severe headache, pain behind the eyes, muscle and joint pain, nausea, vomiting, swollen lymph nodes and rash



潛伏期 Incubation period

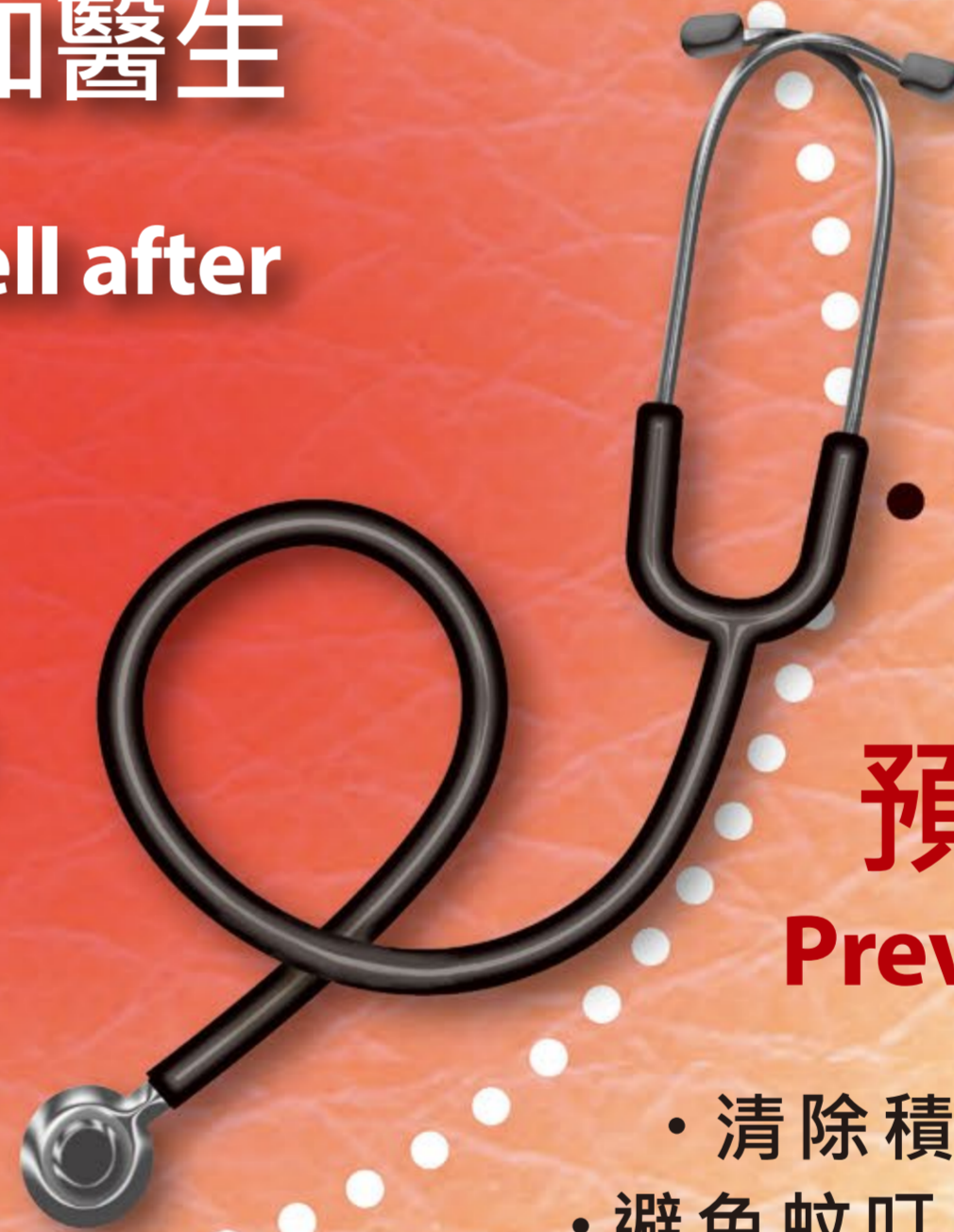
3-14天，通常為4-7天

Ranging from 3-14 days, commonly 4-7 days



外遊返港後若感到不適，應盡快求醫，並將行程細節告知醫生

Anyone feeling unwell after a trip should seek medical advice as soon as possible and provide travel details to their doctors



登革熱病毒 Dengue viruses

- 有四種不同血清型
- 首次感染登革熱的病情一般較輕，若隨後感染其他血清型的病毒，出現重症登革熱（又稱「登革出血熱」）的機會較高
- 縱使病癒，仍終身有風險染上重症登革熱
- 倘無恰當治療，重症登革熱死亡率可超過20%

- Encompass 4 different serotypes
- The symptoms of first infection are usually mild, but subsequent infections with other serotypes are more likely to result in severe dengue (also known as 'dengue haemorrhagic fever').
- Even though recovered, still have life-long risk of contracting severe dengue
- Without proper treatment, death rate of severe dengue can exceed 20%



預防方法 Prevention

- 清除積水
- 避免蚊叮

- Eliminate pockets of stagnant water
- Avoid mosquito bites



衛生防護中心
Centre for Health Protection



衛生防護中心網站 Centre for Health Protection Website

www.chp.gov.hk



衛生防護中心 Facebook 專頁 Centre for Health Protection Facebook

fb.com/CentreforHealthProtection

衛生署二十四小時健康教育熱線
24-Hour Health Education Hotline
of the Department of Health

2833 0111



衛生署
Department of Health

Revised in June 2018
二零一八年六月修訂