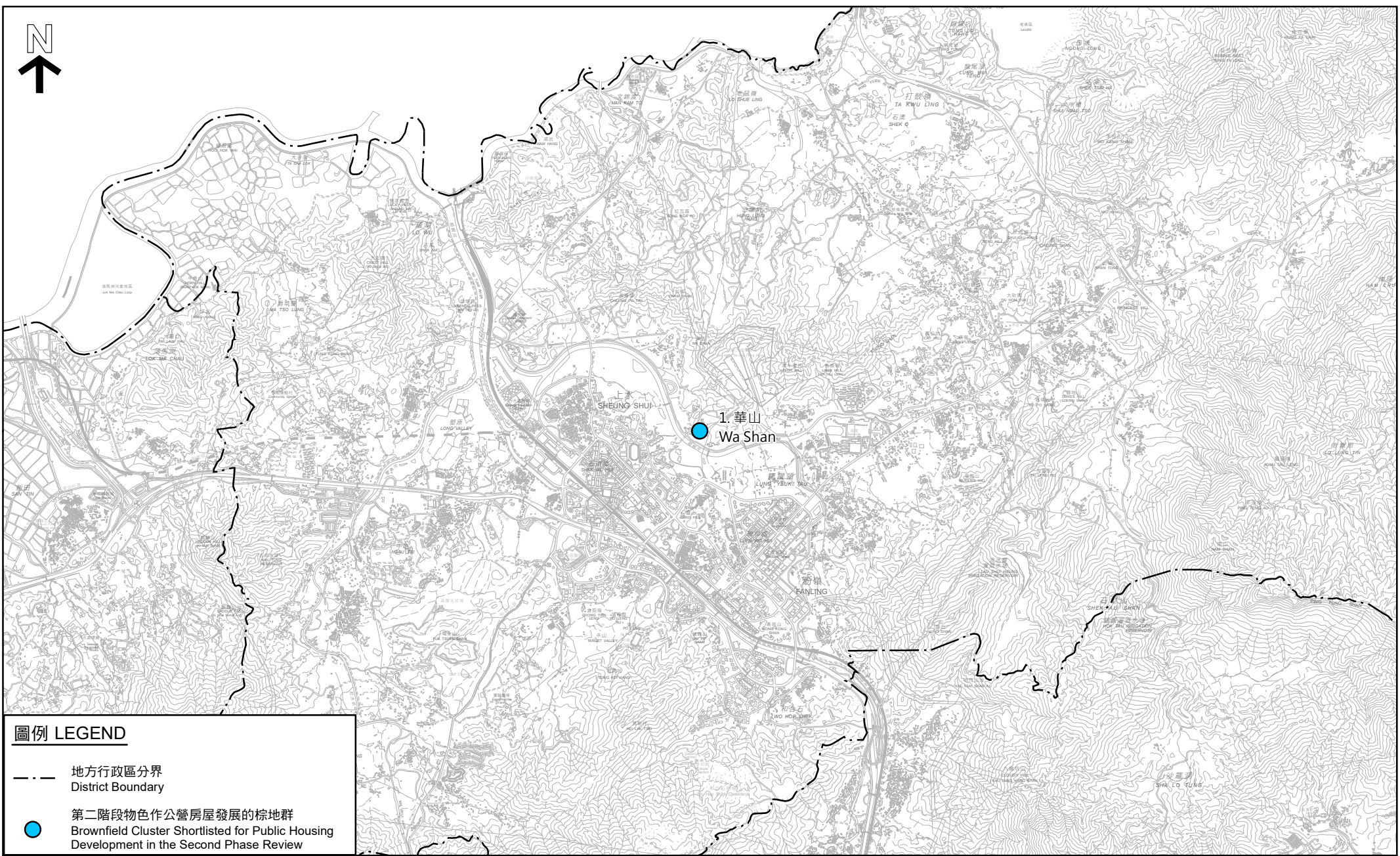


**Four brownfield clusters shortlisted for public housing development
in the second phase review on brownfield sites**

	Location of Brownfield Cluster	Proposed Study Area [Area of Brownfield Site Involved] (about)(ha)^{Note}	Current Land Use Zoning	Plan
Sheung Shui				
1.	Wa Shan (North of Ng Tung River)	4 [2]	“Agriculture” and “Green Belt”	Plan 1
Yuen Long				
2.	Sha Kong Wai North (West of Tin Ying Road)	16 [5]	“Green Belt” and “Open Space (1)”	Plan 2
3.	Ping Kwai Road (Near Ping Pak Lane)	5 [2]	“Residential (Group B) 1” ; “Government, Institution or Community” ; “Open Space” and “Residential (Group A) 1”	Plan 2
4.	Kam Ho Road (South of Pat Heung Road)	6 [2]	“Agriculture” and “Green Belt”	Plan 2
	Total	~31 [~11]		

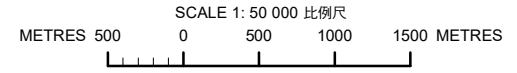
Note: Due to rounding, the sum of figures may differ slightly from the total.



圖例 LEGEND

- 地方行政區分界
District Boundary
- 第二階段物色作公營房屋發展的棕地群
Brownfield Cluster Shortlisted for Public Housing Development in the Second Phase Review

棕地檢討下所物色的北區具公營房屋發展潛力的棕地群
SHORTLISTED CLUSTERS FOR POTENTIAL PUBLIC HOUSING IDENTIFIED UNDER BROWNFIELD SITES REVIEW IN NORTH DISTRICT



規劃署
PLANNING DEPARTMENT



參考編號
REFERENCE No.
M/SR/BF/21/010_1

PLAN 圖
1

本摘要圖於2021年2月25日擬備
EXTRACT PLAN PREPARED ON 25.2.2021

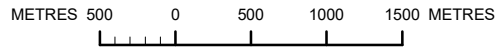


圖例 LEGEND

- 地方行政區分界
District Boundary
- 第二階段物色作公營房屋發展的棕地群
Brownfield Clusters Shortlisted for Public Housing Development in the Second Phase Review

棕地檢討下所物色的元朗區具公營房屋發展潛力的棕地群
SHORTLISTED CLUSTERS FOR POTENTIAL PUBLIC HOUSING IDENTIFIED
UNDER BROWNFIELD SITES REVIEW IN YUEN LONG DISTRICT

SCALE 1: 50 000 比例尺



本摘要圖於2021年2月25日擬備
EXTRACT PLAN PREPARED ON 25.2.2021

規劃署
PLANNING DEPARTMENT



參考編號
REFERENCE No.

M/SR/BF/21/010_2a

PLAN 圖

2