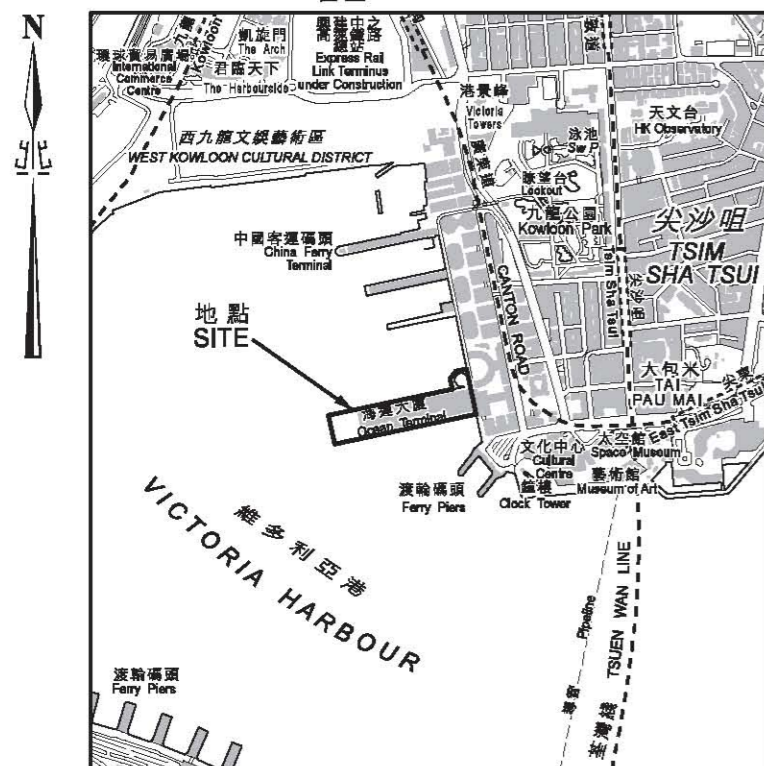


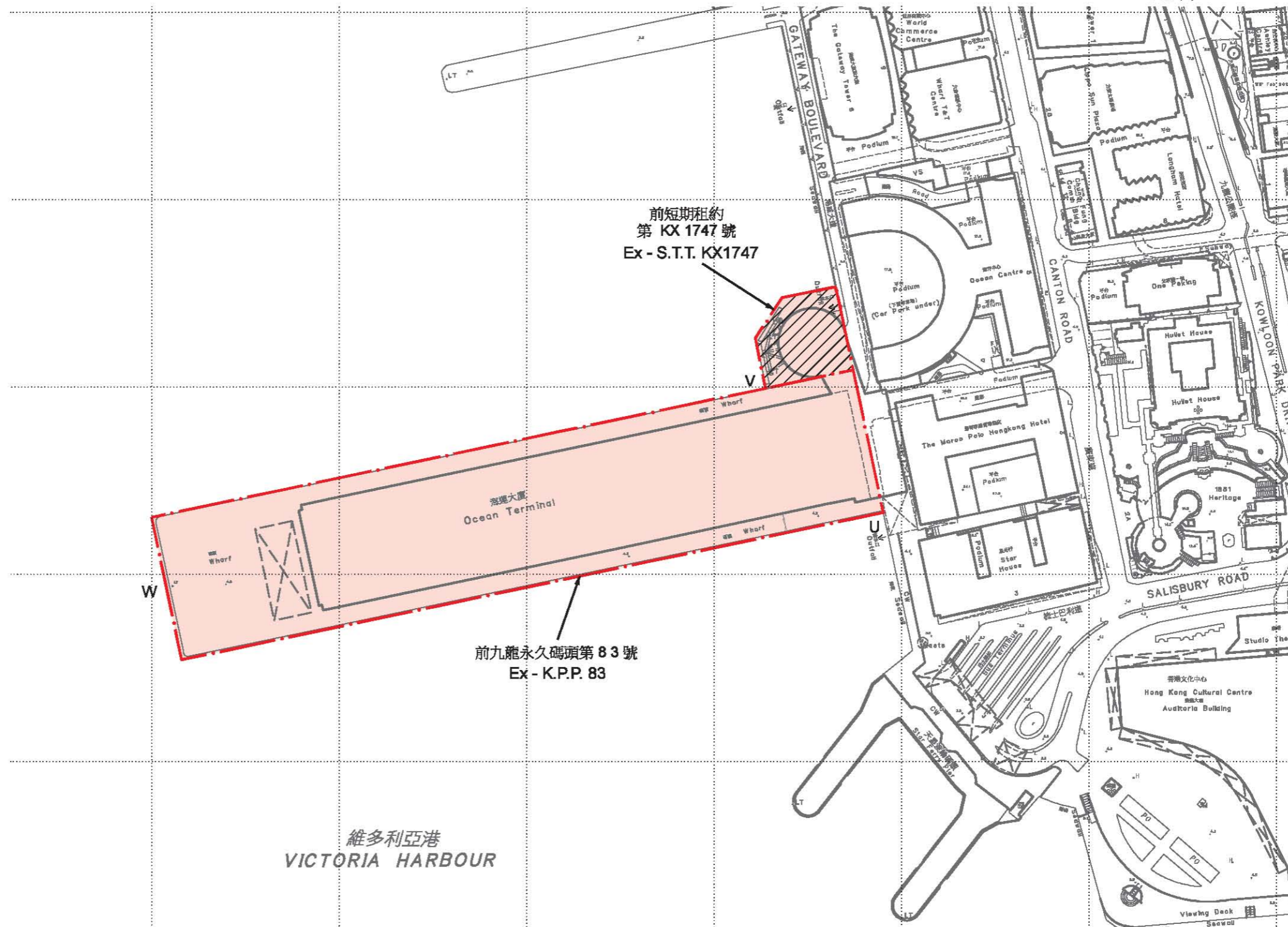
位置 LOCATION



比例 SCALE 1:20 000

U, V, W 海路進出點
SEA ACCESS

 汽車坡道
VEHICULAR ACCESS RAMP



維多利亞港
VICTORIA HARBOUR

以粉紅色及粉紅色綴黑斜線標示的面積約為 31 750 平方米
COLOURED PINK AND PINK HATCHED BLACK AREA 31 750 SQUARE METRES (ABOUT)



只作識別用 FOR IDENTIFICATION PURPOSES ONLY

地政總署 九龍西區地政處
District Lands Office, Kowloon West
Lands Department
圖則由九龍測量處繪製
Plan Prepared by District Survey Office, Kowloon

© 香港特別行政區政府-版權所有 Copyright reserved - Hong Kong SAR Government

九龍內地段第 11178 號
KOWLOON INLAND LOT No. 11178

檔案編號 File No. DSO/K 1067/2004
測量圖編號 Survey Sheet No. 11-SW-4B, 4C, 4D
發展藍圖編號 Layout Plan No.
參考圖編號 Reference Plan. No.
圖則編號 PLAN No. KM8767a