

Table 1 Consumer Price Indices and Year-on-year Rates of Change
at Section Level for April 2016
(Oct. 2014 - Sep. 2015 = 100)

Section	Composite CPI		CPI(A)		CPI(B)		CPI(C)	
	Index for Apr 2016	% change over Apr 2015	Index for Apr 2016	% change over Apr 2015	Index for Apr 2016	% change over Apr 2015	Index for Apr 2016	% change over Apr 2015
Food	104.1	+3.8	104.5	+4.2	104.1	+3.7	103.7	+3.3
<i>Meals bought away from home</i>	103.9	+3.3	104.2	+3.5	103.9	+3.3	103.6	+3.1
<i>Food, excluding meals bought away from home</i>	104.5	+4.7	104.9	+5.3	104.5	+4.8	103.9	+3.7
Housing #	103.5	+4.8	103.2	+4.5	103.8	+5.2	103.5	+4.5
<i>Private housing rent</i>	103.6	+5.0	103.8	+5.2	103.8	+5.3	103.3	+4.4
<i>Public housing rent</i>	99.3	+0.5	99.3	+0.5	99.4	+0.6	-	-
Electricity, gas and water	100.7	-0.2	101.3	+0.6	100.4	-0.7	100.1	-1.0
Alcoholic drinks and tobacco	99.6	-0.2	99.8	*	99.4	-0.4	98.6	-1.2
Clothing and footwear	100.8	-2.2	98.8	-3.5	99.4	-3.5	103.8	+0.1
Durable goods	93.9	-6.2	94.2	-5.7	93.4	-6.8	94.3	-5.7
Miscellaneous goods	101.4	+1.1	101.3	+1.1	101.3	+1.0	101.5	+1.2
Transport	100.8	+2.0	101.4	+2.6	100.8	+2.1	100.3	+1.4
Miscellaneous services	101.3	+1.4	101.3	+1.1	101.1	+1.2	101.5	+1.8
<i>Selected major groups</i>								
<i>Educational services</i>	104.1	+4.3	103.3	+3.4	104.0	+4.2	104.7	+5.0
<i>Information and communications services</i>	99.5	-0.5	99.4	-0.6	99.6	-0.4	99.8	-0.1
<i>Medical services</i>	105.4	+4.8	105.5	+4.8	105.5	+4.9	105.2	+4.7
All items	102.4	+2.7	102.7	+3.0	102.3	+2.7	102.2	+2.4

* Denotes a figure within $\pm 0.05\%$.

- Not applicable.

Note:

The CPI(A), CPI(B) and CPI(C) are compiled with reference to the average expenditure patterns for different groups of households as obtained from the Household Expenditure Survey. By aggregating the expenditure patterns of all households covered by the above three indices, a Composite CPI is also compiled.

The expenditure ranges of the households covered in the 2014/15-based CPI series are as follows:

	Approximate percentage of households covered	Average monthly household expenditure range (at 2014/15 prices)
	(%)	(\$)
CPI(A)	50	5,500 - 24,499
CPI(B)	30	24,500 - 44,499
CPI(C)	10	44,500 - 89,999
Composite CPI	90	5,500 - 89,999

Apart from "Private housing rent" and "Public housing rent", the "Housing" section also includes "Management fees and other housing charges" and "Materials for house maintenance".

Table 2 Movements of Consumer Price Indices, April 2014 - April 2016

<u>Year/month</u>	<u>CPI</u>			
	<u>Year-on-year rate of change (%)</u>			
	<u>Composite</u>	<u>CPI(A)</u>	<u>CPI(B)</u>	<u>CPI(C)</u>
	<u>CPI</u>			
2014 Apr	+3.7 (+3.5)	+3.9 (+3.8)	+3.8 (+3.6)	+3.5 (+3.1)
May	+3.7 (+3.5)	+3.9 (+3.8)	+3.7 (+3.5)	+3.5 (+3.1)
Jun	+3.6 (+3.4)	+3.7 (+3.7)	+3.6 (+3.4)	+3.5 (+3.1)
Jul	+4.0 (+3.3)	+4.6 (+3.6)	+4.0 (+3.3)	+3.5 (+2.9)
Aug	+3.9 (+3.2)	+4.8 (+3.5)	+3.8 (+3.2)	+3.2 (+2.9)
Sep	+6.6 (+3.3)	+12.3 (+4.0)	+4.7 (+3.2)	+3.1 (+2.8)
Oct	+5.2 (+3.4)	+7.1 (+4.1)	+4.7 (+3.2)	+3.6 (+2.7)
Nov	+5.1 (+3.3)	+7.2 (+4.1)	+4.6 (+3.1)	+3.4 (+2.6)
Dec	+4.9 (+3.1)	+6.9 (+3.9)	+4.4 (+2.9)	+3.2 (+2.4)
2015 Jan	+4.1 (+2.3)	+6.3 (+3.3)	+3.6 (+2.1)	+2.2 (+1.4)
Feb	+4.6 (+2.8)	+6.5 (+3.5)	+4.2 (+2.7)	+3.0 (+2.2)
Mar	+4.5 (+2.8)	+6.6 (+3.6)	+4.1 (+2.6)	+2.8 (+1.9)
Apr	+2.8 (+2.4)	+3.9 (+3.0)	+2.6 (+2.3)	+1.9 (+1.7)
May	+3.0 (+2.6)	+4.2 (+3.3)	+2.8 (+2.5)	+2.0 (+1.9)
Jun	+3.1 (+2.6)	+4.4 (+3.4)	+2.9 (+2.5)	+2.0 (+1.9)
Jul	+2.5 (+2.6)	+3.4 (+3.4)	+2.4 (+2.5)	+1.8 (+1.9)
Aug	+2.4 (+2.6)	+3.0 (+3.2)	+2.4 (+2.5)	+1.8 (+2.0)
Sep	+2.0 (+2.1)	+2.1 (+2.1)	+2.1 (+2.2)	+1.8 (+1.9)
Oct	+2.3 (+2.2)	+2.5 (+2.4)	+2.3 (+2.3)	+1.9 (+1.9)
Nov	+2.3 (+2.3)	+2.5 (+2.4)	+2.3 (+2.3)	+2.0 (+2.0)
Dec	+2.4 (+2.3)	+2.6 (+2.5)	+2.4 (+2.3)	+2.1 (+2.1)
2016 Jan	+2.5 (+2.5)	+2.8 (+2.7)	+2.5 (+2.5)	+2.3 (+2.2)
Feb	+3.0 (+3.0)	+3.6 (+3.5)	+2.9 (+2.9)	+2.6 (+2.6)
Mar	+2.9 (+2.8)	+3.0 (+2.9)	+2.8 (+2.8)	+2.8 (+2.8)
Apr	+2.7 (+2.3)	+3.0 (+2.6)	+2.7 (+2.3)	+2.4 (+2.1)

() Denotes the rate of change upon removing the effects of the following Government's one-off relief measures : Government's payment of public housing rentals in August - September 2013, August 2014 and August 2015; the rates concession of up to \$1,500 per quarter in April 2013 - September 2014; the rates concession of up to \$2,500 per quarter in April - September 2015; the rates concession of up to \$1,000 per quarter in April 2016 - March 2017; Government's provision of electricity charge subsidy (subject to maximum cumulative amount of \$3,600 starting from September 2008, \$1,800 starting from July 2011, \$1,800 starting from July 2012 and \$1,800 starting from July 2013); and the suspension of Employees Retraining Levy in August 2008 - July 2013.

Note: From October 2015 onwards, the year-on-year rates of change are derived from the 2014/15-based CPIs. The year-on-year rates of change before October 2015 were derived using the index series in the base periods at that time (for instance the 2009/10-based index series), compared with the index a year earlier in the same base period.

Table 3 Movements of Seasonally Adjusted Consumer Price Indices, April 2014 - April 2016

<u>Year/month</u>	<u>Seasonally adjusted CPI[#]</u>			
	<u>Average monthly rate of change during the latest 3 months (%)</u>			
	<u>Composite</u> <u>CPI</u>	<u>CPI(A)</u>	<u>CPI(B)</u>	<u>CPI(C)</u>
2014 Apr	+0.3 (+0.3)	+0.4 (+0.4)	+0.3 (+0.3)	+0.3 (+0.3)
May	+0.2 (+0.2)	+0.2 (+0.2)	+0.2 (+0.2)	+0.3 (+0.2)
Jun	+0.2 (+0.2)	+0.2 (+0.3)	+0.2 (+0.2)	+0.2 (+0.2)
Jul	+0.3 (+0.1)	+0.5 (+0.2)	+0.3 (+0.2)	+0.2 (+0.1)
Aug	-0.5 (+0.1)	-1.6 (+0.2)	* (+0.2)	+0.2 (+0.1)
Sep	+0.5 (+0.3)	+0.9 (+0.5)	+0.5 (+0.3)	+0.2 (+0.1)
Oct	+0.7 (+0.3)	+1.1 (+0.5)	+0.6 (+0.3)	+0.4 (+0.2)
Nov	+1.6 (+0.4)	+3.4 (+0.5)	+0.9 (+0.3)	+0.4 (+0.3)
Dec	+0.5 (+0.2)	+0.8 (+0.2)	+0.5 (+0.2)	+0.3 (+0.1)
2015 Jan	+0.1 (+0.1)	+0.1 (+0.1)	+0.1 (+0.1)	+0.1 (+0.1)
Feb	* (*)	+0.1 (+0.1)	* (*)	* (*)
Mar	+0.1 (+0.1)	+0.2 (+0.2)	+0.1 (+0.1)	+0.1 (+0.1)
Apr	-0.2 (+0.2)	-0.4 (+0.2)	-0.2 (+0.2)	-0.1 (+0.2)
May	-0.2 (+0.2)	-0.4 (+0.2)	-0.1 (+0.2)	* (+0.2)
Jun	-0.2 (+0.2)	-0.4 (+0.2)	-0.2 (+0.2)	* (+0.2)
Jul	+0.2 (+0.2)	+0.3 (+0.2)	+0.2 (+0.2)	+0.2 (+0.2)
Aug	-0.4 (+0.2)	-1.5 (+0.2)	* (+0.2)	+0.1 (+0.1)
Sep	+0.2 (+0.2)	+0.1 (+0.1)	+0.2 (+0.2)	+0.2 (+0.2)
Oct	+0.6 (+0.2)	+0.8 (+0.2)	+0.6 (+0.3)	+0.5 (+0.2)
Nov	+1.3 (+0.3)	+2.7 (+0.3)	+0.8 (+0.3)	+0.5 (+0.3)
Dec	+0.7 (+0.3)	+0.9 (+0.3)	+0.6 (+0.3)	+0.5 (+0.2)
2016 Jan	+0.1 (+0.1)	+0.2 (+0.2)	+0.1 (+0.1)	+0.1 (+0.1)
Feb	+0.3 (+0.3)	+0.5 (+0.5)	+0.3 (+0.3)	+0.3 (+0.3)
Mar	+0.3 (+0.3)	+0.3 (+0.3)	+0.3 (+0.3)	+0.3 (+0.3)
Apr	* (+0.2)	-0.2 (+0.3)	* (+0.2)	+0.1 (+0.3)

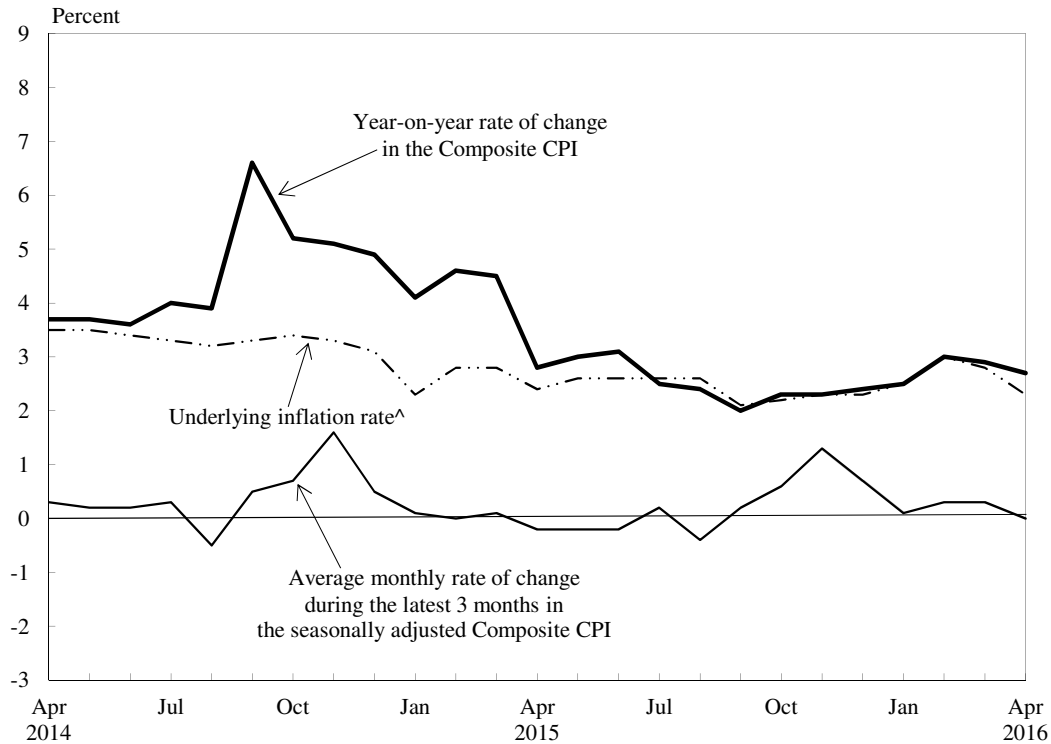
* Denotes a figure within $\pm 0.05\%$.

() Denotes the rate of change upon removing the effects of the following Government's one-off relief measures : Government's payment of public housing rentals in August 2014 and August 2015; the rates concession of up to \$1,500 per quarter in April 2013 - September 2014; the rates concession of up to \$2,500 per quarter in April - September 2015; the rates concession of up to \$1,000 per quarter in April 2016 - March 2017; and Government's provision of electricity charge subsidy (subject to maximum cumulative amount of \$3,600 starting from September 2008, \$1,800 starting from July 2011, \$1,800 starting from July 2012 and \$1,800 starting from July 2013).

The seasonally adjusted indices are subject to revision up to 3 years after original publication.

Note: In calculating the average monthly rates of change during the latest 3 months in the seasonally adjusted CPIs, the new 2014/15-based CPIs are used as from the reference month of January 2015 onwards. For the earlier months, the average monthly rates of change during the latest 3 months are derived from the seasonally adjusted CPIs with old base period.

Chart 1 Movements of the Composite Consumer Price Index



^ Denotes the year-on-year rate of change in the Composite CPI upon removing the effects of the following Government's one-off relief measures: Government's payment of public housing rentals in August to September 2013, August 2014 and August 2015; the rates concession of up to \$1,500 per quarter in April 2013 to September 2014; the rates concession of up to \$2,500 per quarter in April to September 2015; the rates concession of up to \$1,000 per quarter in April 2016 to March 2017; Government's provision of electricity charge subsidy (subject to a maximum cumulative amount of \$3,600 starting from September 2008, \$1,800 starting from July 2011, \$1,800 starting from July 2012 and \$1,800 starting from July 2013); and the suspension of Employees Retraining Levy in August 2008 to July 2013.

Note : The seasonally adjusted indices are subject to revision up to 3 years after original publication.