

Table 1 Consumer Price Indices and Year-on-year Rates of Change
at Section Level for July 2020
(Oct. 2014 - Sep. 2015 = 100)

Section	Composite CPI		CPI(A)		CPI(B)		CPI(C)	
	Index for Jul 2020	% change over Jul 2019	Index for Jul 2020	% change over Jul 2019	Index for Jul 2020	% change over Jul 2019	Index for Jul 2020	% change over Jul 2019
Food	117.6	+0.8	119.6	+1.3	116.8	+0.6	115.5	*
<i>Meals bought away from home</i>	111.5	-1.1	112.7	-0.5	111.3	-1.3	110.0	-1.8
<i>Food, excluding meals bought away from home</i>	128.9	+3.9	130.4	+3.9	128.5	+4.1	126.7	+3.4
Housing [#]	108.2	-4.8	98.1	-15.2	112.9	-0.4	113.0	+1.0
<i>Private housing rent</i>	113.4	+0.8	114.6	+0.7	113.6	+0.8	112.1	+0.8
<i>Public housing rent</i>	8.8	-92.8	8.8	-92.8	8.8	-92.9	-	-
Electricity, gas and water	79.8	-18.6	77.1	-21.8	80.7	-17.4	85.2	-12.6
Alcoholic drinks and tobacco	105.7	+0.3	107.2	+0.6	104.4	+0.2	104.4	-0.3
Clothing and footwear	88.9	-4.7	89.0	-4.0	88.7	-4.7	89.2	-5.2
Durable goods	84.2	-3.2	83.5	-3.6	83.3	-3.3	85.6	-2.9
Miscellaneous goods	109.5	+2.3	111.1	+2.1	109.2	+2.7	108.4	+1.9
Transport	104.7	-3.7	101.6	-5.2	104.5	-4.0	107.2	-2.3
Miscellaneous services	109.2	+0.6	104.7	+0.1	108.6	+0.6	112.4	+0.9
<i>Selected major groups</i>								
<i>Educational services</i>	108.5	+2.8	105.3	+1.8	107.8	+2.8	111.3	+3.4
<i>Information and communications services</i>	87.0	-0.5	86.7	-1.1	86.7	-0.4	88.0	+0.6
<i>Medical services</i>	121.8	+2.1	122.0	+2.1	121.2	+2.0	122.3	+2.2
All items	108.2	-2.3	105.4	-6.0	109.4	-0.7	109.7	-0.1

* Denotes a figure within $\pm 0.05\%$.

- Denotes not applicable.

Note:

The CPI(A), CPI(B) and CPI(C) are compiled with reference to the average expenditure patterns of different groups of households as obtained from the Household Expenditure Survey. By aggregating the expenditure patterns of all households covered by the above three indices, a Composite CPI is also compiled.

The expenditure ranges of the households covered in the 2014/15-based CPI series are as follows:

	Approximate percentage of households covered (%)	Average monthly household expenditure range (at 2014/15 prices) (\$)	Average monthly household expenditure range (adjusted to 2019 prices) (\$)
CPI(A)	50	5,500 - 24,499	6,200 - 27,200
CPI(B)	30	24,500 - 44,499	27,200 - 48,900
CPI(C)	10	44,500 - 89,999	48,900 - 98,600
Composite CPI	90	5,500 - 89,999	6,200 - 98,600

Apart from "Private housing rent" and "Public housing rent", the "Housing" section also includes "Management fees and other housing charges" and "Materials for house maintenance".

Table 2 Movements of Consumer Price Indices, July 2018 - July 2020

		CPI			
		Year-on-year rate of change (%)			
<u>Year/month</u>	<u>Composite CPI</u>	<u>CPI(A)</u>	<u>CPI(B)</u>	<u>CPI(C)</u>	
2018 Jul	+2.4 (+2.7)	+2.5 (+2.8)	+2.3 (+2.7)	+2.3 (+2.6)	
Aug	+2.3 (+2.6)	+2.5 (+2.8)	+2.2 (+2.6)	+2.0 (+2.3)	
Sep	+2.7 (+3.1)	+3.3 (+3.6)	+2.5 (+2.9)	+2.4 (+2.7)	
Oct	+2.7 (+3.0)	+3.2 (+3.5)	+2.5 (+2.9)	+2.3 (+2.6)	
Nov	+2.6 (+2.9)	+3.0 (+3.3)	+2.4 (+2.8)	+2.3 (+2.6)	
Dec	+2.5 (+2.9)	+3.0 (+3.3)	+2.4 (+2.8)	+2.2 (+2.5)	
2019 Jan	+2.4 (+3.0)	+2.8 (+3.3)	+2.3 (+2.9)	+2.3 (+2.6)	
Feb	+2.1 (+2.6)	+2.6 (+3.2)	+1.9 (+2.4)	+1.8 (+2.1)	
Mar	+2.1 (+2.6)	+2.4 (+3.0)	+1.9 (+2.4)	+1.9 (+2.3)	
Apr	+2.9 (+2.9)	+3.0 (+3.1)	+2.8 (+2.7)	+3.0 (+2.9)	
May	+2.8 (+2.8)	+3.1 (+3.2)	+2.6 (+2.5)	+2.7 (+2.6)	
Jun	+3.3 (+3.2)	+3.9 (+4.0)	+3.0 (+2.9)	+2.9 (+2.8)	
Jul	+3.3 (+3.2)	+3.9 (+4.0)	+3.1 (+3.0)	+2.8 (+2.7)	
Aug	+3.5 (+3.4)	+4.1 (+4.2)	+3.2 (+3.1)	+3.0 (+2.9)	
Sep	+3.2 (+3.2)	+3.5 (+3.6)	+3.1 (+3.0)	+3.0 (+2.9)	
Oct	+3.1 (+3.1)	+3.5 (+3.6)	+3.1 (+3.0)	+2.9 (+2.8)	
Nov	+3.0 (+2.9)	+3.5 (+3.6)	+2.9 (+2.8)	+2.5 (+2.4)	
Dec	+2.9 (+2.9)	+3.4 (+3.5)	+2.9 (+2.7)	+2.5 (+2.4)	
2020 Jan	+1.4 (+3.7)	-2.0 (+4.3)	+2.8 (+3.5)	+3.4 (+3.4)	
Feb	+2.2 (+2.5)	+2.7 (+3.3)	+2.1 (+2.3)	+1.8 (+1.8)	
Mar	+2.3 (+2.6)	+2.5 (+3.1)	+2.3 (+2.5)	+2.1 (+2.1)	
Apr	+1.9 (+2.3)	+2.3 (+3.0)	+1.9 (+2.3)	+1.5 (+1.7)	
May	+1.5 (+1.9)	+1.7 (+2.5)	+1.5 (+1.9)	+1.2 (+1.4)	
Jun	+0.7 (+1.2)	+0.6 (+1.4)	+0.8 (+1.2)	+0.7 (+1.0)	
Jul	-2.3 (+0.2)	-6.0 (+0.4)	-0.7 (+0.2)	-0.1 (+0.1)	

() Denotes the rate of change after netting out the effects of the following Government's one-off relief measures : the rates concession of up to \$1,000 per quarter in April 2016 - March 2018; the rates concession of up to \$2,500 per quarter in April 2018 - March 2019; the rates concession of up to \$1,500 per quarter in April 2019 - March 2021; Government's provision of electricity charge allowance (subject to maximum cumulative amount of \$3,600 starting from September 2008, \$1,800 starting from July 2011, \$1,800 starting from July 2012, \$1,800 starting from July 2013, \$3,000 starting from January 2019 and \$2,000 starting from January 2020); Government's payment of examination fees for school candidates sitting for 2019 and 2020 Hong Kong Diploma of Secondary Education (HKDSE) Examination; and Government's payment of public housing rentals and waiver of two-thirds of rent for tenants of Group B estates by Hong Kong Housing Society in January and July 2020.

Table 3 Movements of Seasonally Adjusted Consumer Price Indices, July 2018 - July 2020

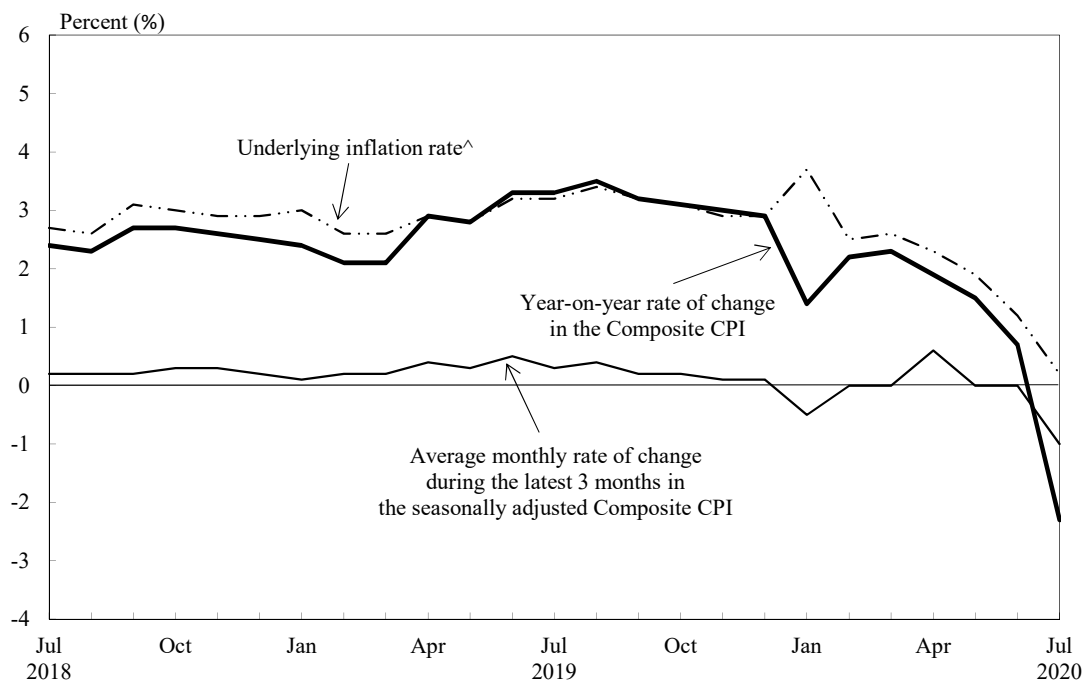
<u>Year/month</u>	Seasonally adjusted CPI [#]			
	Average monthly rate of change during the latest 3 months (%)			
	<u>Composite</u> <u>CPI</u>	<u>CPI(A)</u>	<u>CPI(B)</u>	<u>CPI(C)</u>
2018 Jul	+0.2 (+0.2)	+0.2 (+0.2)	+0.2 (+0.2)	+0.2 (+0.2)
Aug	+0.2 (+0.2)	+0.2 (+0.2)	+0.2 (+0.2)	+0.1 (+0.1)
Sep	+0.2 (+0.2)	+0.4 (+0.4)	+0.2 (+0.2)	+0.2 (+0.2)
Oct	+0.3 (+0.3)	+0.4 (+0.4)	+0.2 (+0.2)	+0.2 (+0.2)
Nov	+0.3 (+0.3)	+0.3 (+0.3)	+0.2 (+0.2)	+0.3 (+0.3)
Dec	+0.2 (+0.2)	+0.1 (+0.1)	+0.2 (+0.2)	+0.3 (+0.3)
2019 Jan	+0.1 (+0.1)	* (+0.1)	+0.1 (+0.1)	+0.1 (+0.1)
Feb	+0.2 (+0.2)	+0.2 (+0.3)	+0.2 (+0.2)	+0.2 (+0.2)
Mar	+0.2 (+0.2)	+0.2 (+0.3)	+0.2 (+0.2)	+0.2 (+0.2)
Apr	+0.4 (+0.3)	+0.4 (+0.3)	+0.4 (+0.3)	+0.4 (+0.4)
May	+0.3 (+0.2)	+0.3 (+0.2)	+0.3 (+0.2)	+0.3 (+0.2)
Jun	+0.5 (+0.4)	+0.6 (+0.6)	+0.5 (+0.4)	+0.4 (+0.3)
Jul	+0.3 (+0.3)	+0.5 (+0.5)	+0.3 (+0.3)	+0.2 (+0.2)
Aug	+0.4 (+0.4)	+0.5 (+0.5)	+0.4 (+0.4)	+0.3 (+0.3)
Sep	+0.2 (+0.2)	+0.2 (+0.2)	+0.2 (+0.2)	+0.2 (+0.2)
Oct	+0.2 (+0.2)	+0.2 (+0.2)	+0.2 (+0.2)	+0.2 (+0.2)
Nov	+0.1 (+0.1)	+0.1 (+0.1)	+0.1 (+0.1)	+0.2 (+0.2)
Dec	+0.1 (+0.1)	+0.1 (+0.1)	+0.1 (+0.1)	+0.1 (+0.1)
2020 Jan	-0.5 (+0.3)	-1.8 (+0.3)	* (+0.3)	+0.2 (+0.3)
Feb	* (+0.1)	-0.1 (+0.2)	* (+0.1)	* (+0.1)
Mar	* (+0.1)	-0.1 (+0.2)	* (+0.1)	* (+0.1)
Apr	+0.6 (-0.1)	+1.8 (-0.1)	+0.1 (*)	-0.1 (-0.1)
May	* (*)	-0.1 (-0.1)	* (*)	* (*)
Jun	* (*)	* (*)	* (*)	-0.1 (-0.1)
Jul	-1.0 (-0.3)	-2.2 (-0.3)	-0.5 (-0.4)	-0.3 (-0.3)

* Denotes a figure within $\pm 0.05\%$.

() Denotes the rate of change after netting out the effects of the following Government's one-off relief measures : the rates concession of up to \$1,000 per quarter in April 2016 - March 2018; the rates concession of up to \$2,500 per quarter in April 2018 - March 2019; the rates concession of up to \$1,500 per quarter in April 2019 - March 2021; Government's provision of electricity charge allowance (subject to maximum cumulative amount of \$3,600 starting from September 2008, \$1,800 starting from July 2011, \$1,800 starting from July 2012, \$1,800 starting from July 2013, \$3,000 starting from January 2019 and \$2,000 starting from January 2020); Government's payment of examination fees for school candidates sitting for 2019 and 2020 Hong Kong Diploma of Secondary Education (HKDSE) Examination; and Government's payment of public housing rentals and waiver of two-thirds of rent for tenants of Group B estates by Hong Kong Housing Society in January and July 2020.

The seasonally adjusted indices are subject to revision up to 3 years after original publication.

Chart 1 Movements of the Composite Consumer Price Index



[^] Denotes the year-on-year rate of change in the Composite CPI after netting out the effects of the following Government's one-off relief measures: the rates concession of up to \$1,000 per quarter in April 2016 to March 2018; the rates concession of up to \$2,500 per quarter in April 2018 to March 2019; the rates concession of up to \$1,500 per quarter in April 2019 to March 2021; Government's provision of electricity charge allowance (subject to a maximum cumulative amount of \$3,600 starting from September 2008, \$1,800 starting from July 2011, \$1,800 starting from July 2012, \$1,800 starting from July 2013, \$3,000 starting from January 2019 and \$2,000 starting from January 2020); Government's payment of examination fees for school candidates sitting for 2019 and 2020 Hong Kong Diploma of Secondary Education (HKDSE) Examination; and Government's payment of public housing rentals and waiver of two-thirds of rent for tenants of Group B estates by Hong Kong Housing Society in January and July 2020.

Note : The seasonally adjusted indices are subject to revision up to 3 years after original publication.