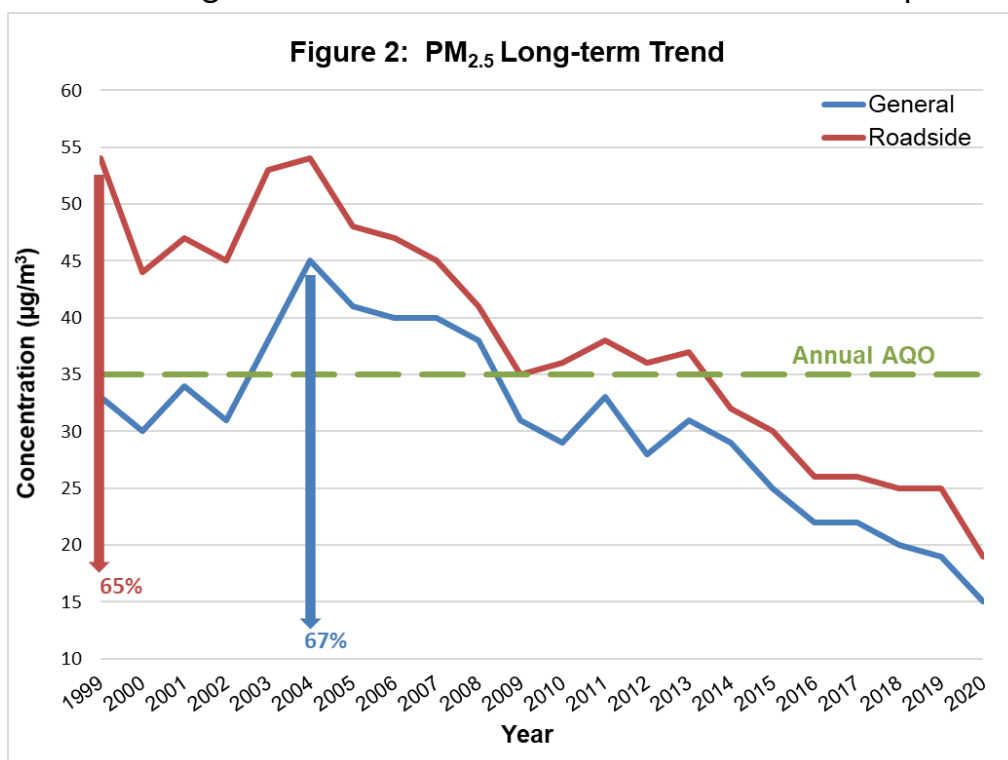
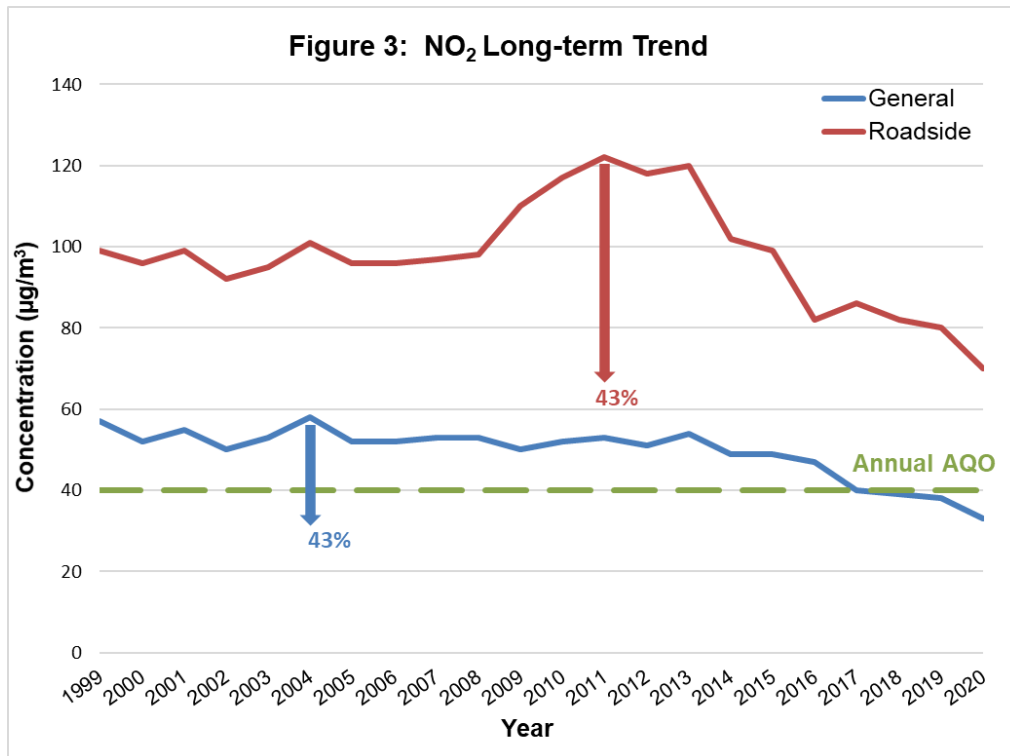


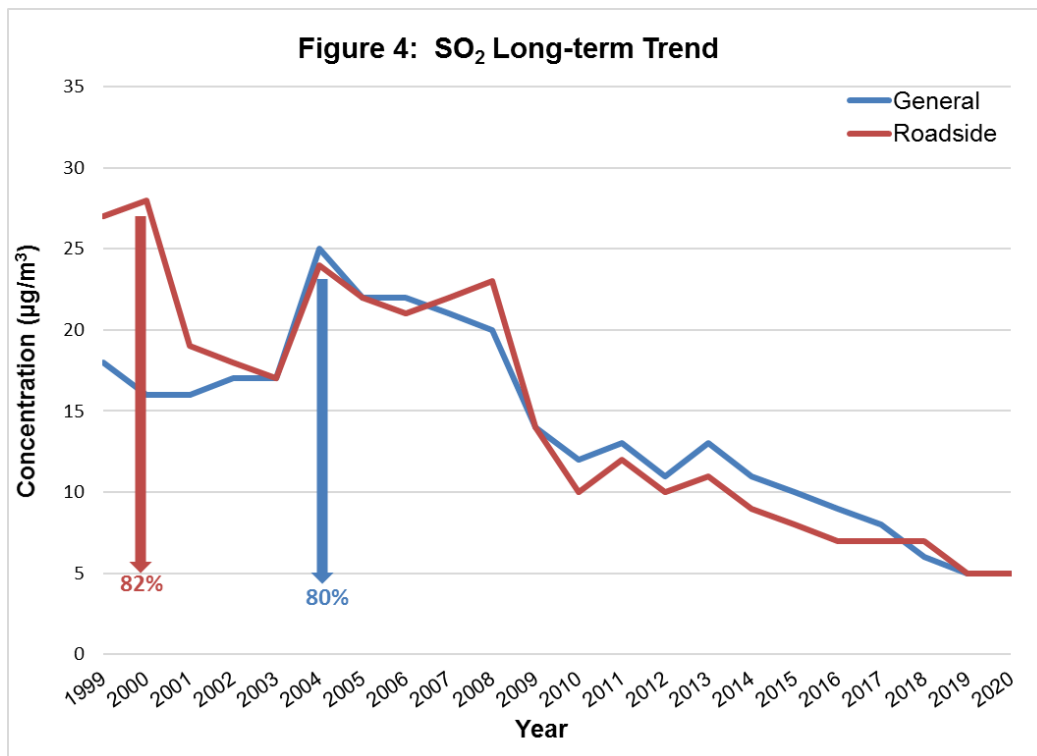
Note: The above percentage reduction is the difference between the highest level during 1999-2020 and that of 2020. Data of 2020 is preliminary.



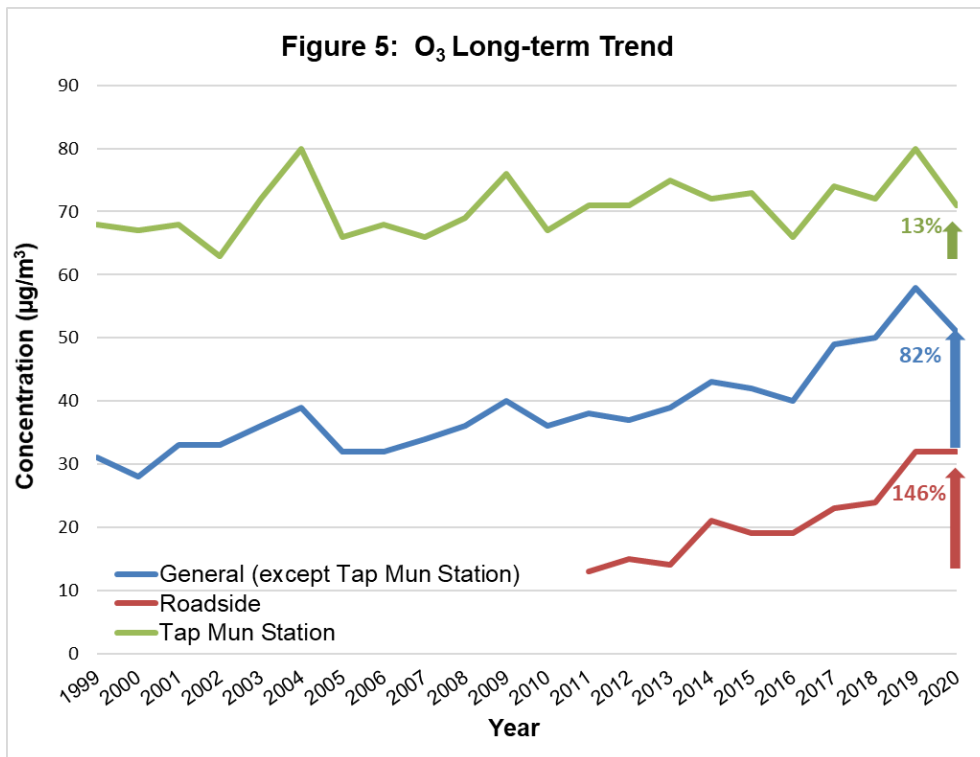
Note: The above percentage reduction is the difference between the highest level during 1999-2020 and that of 2020. Data of 2020 is preliminary.



Note: The above percentage reduction is the difference between the highest level during 1999-2020 and that of 2020. Data of 2020 is preliminary.



Note: The above percentage reduction is the difference between the highest level during 1999-2020 and that of 2020. Data of 2020 is preliminary.



Note: The above percentage increment is the difference between the lowest level during 1999-2020 and that of 2020. Data of 2020 is preliminary.

Status of compliance with Air Quality Objectives (AQOs) at various Air Quality Monitoring Stations(AQMSs) in 2020

		Long-term (annual) AQOs			Short-term AQOs							
Pollutant		PM10	PM2.5	NO2	PM10	PM2.5	NO2	O3	SO2	SO2	CO	CO
Average time		Annual	Annual	Annual	24-hr	24-hr	1-hr	8-hr	10-min	24-hr	1-hr	8-hr
Concentration limit (µg/m ³)		50	35	40	100	75	200	160	500	125	30 000	10 000
Allowable no. of exceedances		N.A.	N.A.	N.A.	9	9	18	9	3	3	0	0
Compliance status		Annual average concentration /Compliance			No. of exceedances / Compliance							
General monitoring station	Central/Western	25 /Yes	16 /Yes	32 /Yes	0 /Yes	0 /Yes	1 /Yes	7 /Yes	0 /Yes	0 /Yes	--	--
	Southern [^]	27 /-	14 /-	28 /-	0 /-	0 /-	0 /-	4 /-	0 /-	0 /-	0 /-	0 /-
	Eastern	27 /Yes	14 /Yes	34 /Yes	0 /Yes	0 /Yes	0 /Yes	5 /Yes	0 /Yes	0 /Yes	--	--
	Kwun Tong	32 /Yes	16 /Yes	43 /No	0 /Yes	0 /Yes	3 /Yes	1 /Yes	0 /Yes	0 /Yes	--	--
	Sham Shui Po	28 /Yes	14 /Yes	45 /No	0 /Yes	0 /Yes	5 /Yes	3 /Yes	0 /Yes	0 /Yes	--	--
	Kwai Chung	23 /Yes	14 /Yes	48 /No	0 /Yes	0 /Yes	7 /Yes	1 /Yes	0 /Yes	0 /Yes	--	--
	Tsuen Wan	24 /Yes	15 /Yes	36 /Yes	0 /Yes	0 /Yes	0 /Yes	4 /Yes	0 /Yes	0 /Yes	0 /Yes	0 /Yes
	Tseung Kwan O	24 /Yes	12 /Yes	23 /Yes	0 /Yes	0 /Yes	1 /Yes	7 /Yes	0 /Yes	0 /Yes	0 /Yes	0 /Yes
	Yuen Long	30 /Yes	16 /Yes	32 /Yes	1 /Yes	0 /Yes	0 /Yes	8 /Yes	0 /Yes	0 /Yes	0 /Yes	0 /Yes
	Tuen Mun	34 /Yes	20 /Yes	40 /Yes	1 /Yes	0 /Yes	5 /Yes	11 /No	0 /Yes	0 /Yes	0 /Yes	0 /Yes
	Tung Chung	25 /Yes	14 /Yes	28 /Yes	0 /Yes	0 /Yes	0 /Yes	11 /No	0 /Yes	0 /Yes	0 /Yes	0 /Yes
	Tai Po	24 /Yes	15 /Yes	30 /Yes	0 /Yes	0 /Yes	0 /Yes	14 /No	0 /Yes	0 /Yes	--	--
	Sha Tin	25 /Yes	15 /Yes	27 /Yes	0 /Yes	0 /Yes	0 /Yes	6 /Yes	0 /Yes	0 /Yes	--	--
North [^]	26 /-	16 /-	34 /-	0 /-	0 /-	0 /-	10 /No	0 /-	0 /-	0 /-	0 /-	
Tap Mun	25 /Yes	14 /Yes	9 /Yes	0 /Yes	0 /Yes	0 /Yes	17 /No	0 /Yes	0 /Yes	0 /Yes	0 /Yes	
Roadside monitoring station	Causeway Bay	37 /Yes	23 /Yes	68 /No	0 /Yes	0 /Yes	23 /No	0 /Yes	0 /Yes	0 /Yes	0 /Yes	0 /Yes
	Central	29 /Yes	17 /Yes	68 /No	0 /Yes	0 /Yes	40 /No	0 /Yes	0 /Yes	0 /Yes	0 /Yes	0 /Yes
	Mong Kok	29 /Yes	18 /Yes	74 /No	0 /Yes	0 /Yes	37 /No	0 /Yes	0 /Yes	0 /Yes	0 /Yes	0 /Yes

2020 data are not yet fully validated.

[^] Southern and North AQMSs commenced operation on July 10, 2020. Therefore, the distribution of the measured data is not even enough for compliance assessment.

-- CO is not measured at the monitoring station.