



活化歷史建築伙伴計劃 第六期  
REVITALISING HISTORIC BUILDINGS  
THROUGH PARTNERSHIP SCHEME BATCH VI



大潭篤原水抽水站員工宿舍群  
Tai Tam Tuk Raw Water Pumping Station  
Staff Quarters Compound



白樓  
Homi Villa



景賢里  
King Yin Lei



芳園書室  
Fong Yuen Study Hall



前北九龍裁判法院  
Former North Kowloon Magistracy





## 保育歷史建築諮詢委員會視察大潭篤原水抽水站員工宿舍群

Site visit at Tai Tam Tuk Raw Water Pumping Station Staff Quarters Compound by the Advisory Committee on Built Heritage Conservation







## 保育歷史建築諮詢委員會視察景賢里 及芳園書室

Site visit at King Yin Lei & Fong Yuen Study Hall by the  
Advisory Committee on Built Heritage Conservation





# 大潭篤原水抽水站員工宿舍群

## Tai Tam Tuk Raw Water Pumping Station Staff Quarters Compound



獲選計劃：「水圓地方」

Project Selected: 'EARTH – Eco, Art & Culture, Revitalisation, Technology and Heritage'







## 「水圓地方」計劃中之教育及休閒活動

Proposed educational and leisure activities by the 'EARTH – Eco, Art & Culture, Revitalisation, Technology and Heritage' project





# 白樓 Homi Villa



獲選計劃：「國史教育中心悠悠館」  
Project Selected: 'CNHE Youyou Villa'







「國史教育中心悠悠館」計劃模擬圖  
Artist's impression of 'CNHE Youyou Villa'



# 景賢里 King Yin Lei

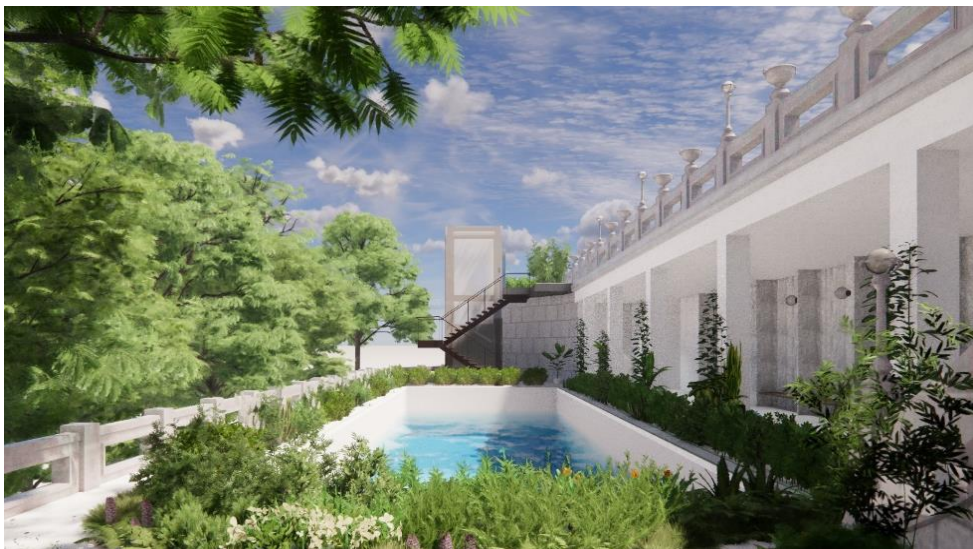


獲選計劃：「景賢里·養生殿 - 基於普洱茶、中醫藥」

Project Selected: 'King Yin Lei – a Healthy Living Centre based on Pu'er Tea & TCM'







「景賢里·養生殿 - 基於普洱茶、中醫藥」計劃模擬圖  
Artist's impression of 'King Yin Lei – a Healthy Living Centre based on Pu'er Tea & TCM'



# 芳園書室 Fong Yuen Study Hall



獲選計劃：「創學芳園」

Project Selected: 'Fong Yuen Study Hall – Experiential Learning Centre'





# 「創學芳園」計劃模擬圖

## Artist's impression of 'Fong Yuen Study Hall – Experiential Learning Centre'







## 活化工程創造就業機會 Job opportunities created by Revitalisation Scheme





# 前北九龍裁判法院 Former North Kowloon Magistracy



彰顯歷史價值及重要性  
Reflection of historical value  
and significance

技術範疇  
Technical aspects

管理能力及其他考慮因素  
Management capability and  
other considerations

社會價值及  
社會企業的營運  
Social value and social  
enterprise operation

財務可行性  
Financial viability









# 活化歷史建築伙伴計劃 (營運中項目) Operating Projects of the Revitalisation Scheme



舊大澳警署 (大澳文物酒店)  
Old Tai O Police Station  
(Tai O Heritage Hotel)



雷生春 (香港浸會大學中醫藥學院 - 雷生春堂)  
Lui Seng Chun (HKBU School of Chinese Medicine  
- Lui Seng Chun)



前荔枝角醫院 (饒宗頤文化館)  
Former Lai Chi Kok Hospital (Jao Tsung-I Academy)



美荷樓 (YHA美荷樓青年旅舍)  
Mei Ho House (YHA Mei Ho House Youth Hostel)



舊大埔警署 (綠匯學苑)  
Old Tai Po Police Station  
(The Green Hub for Sustainable Living)



石屋 (石屋家園)  
Stone Houses (Stone Houses Family Garden)



藍屋建築群 (We嘩藍屋)  
Blue House Cluster (Viva Blue House)



必列啫士街街市 (香港新聞博覽館)  
Bridges Street Market (Hong Kong News-Expo)



前粉嶺裁判法院 (香港青年協會領袖學院)  
Former Fanling Magistracy  
(The HKFYG Leadership Institute)



虎豹別墅 (虎豹樂園)  
Haw Par Mansion (Haw Par Music)



# 活化歷史建築伙伴計劃 (第四期) Batch IV of the Revitalisation Scheme



試行營運中  
Trial-run in progress

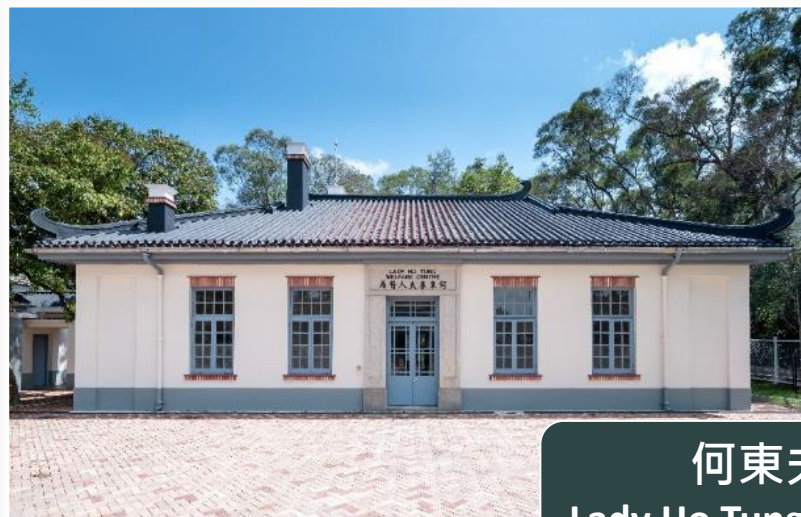
舊牛奶公司高級職員宿舍  
Old Dairy Farm Senior Staff Quarters

薄鳧林牧場  
The Pokfulam Farm



書館街12號  
No. 12 School Street

大坑火龍文化館  
Tai Hang Fire Dragon Heritage Centre



何東夫人醫局  
Lady Ho Tung Welfare Centre

何東夫人醫局·生態研習中心  
Lady Ho Tung Welfare Centre Eco-Learn Institute





活化歷史建築伙伴計劃 第六期  
REVITALISING HISTORIC BUILDINGS  
THROUGH PARTNERSHIP SCHEME BATCH VI