

Figure 1 Monthly mean temperature anomalies (against the 1991-2020 normal) in Hong Kong in 2022

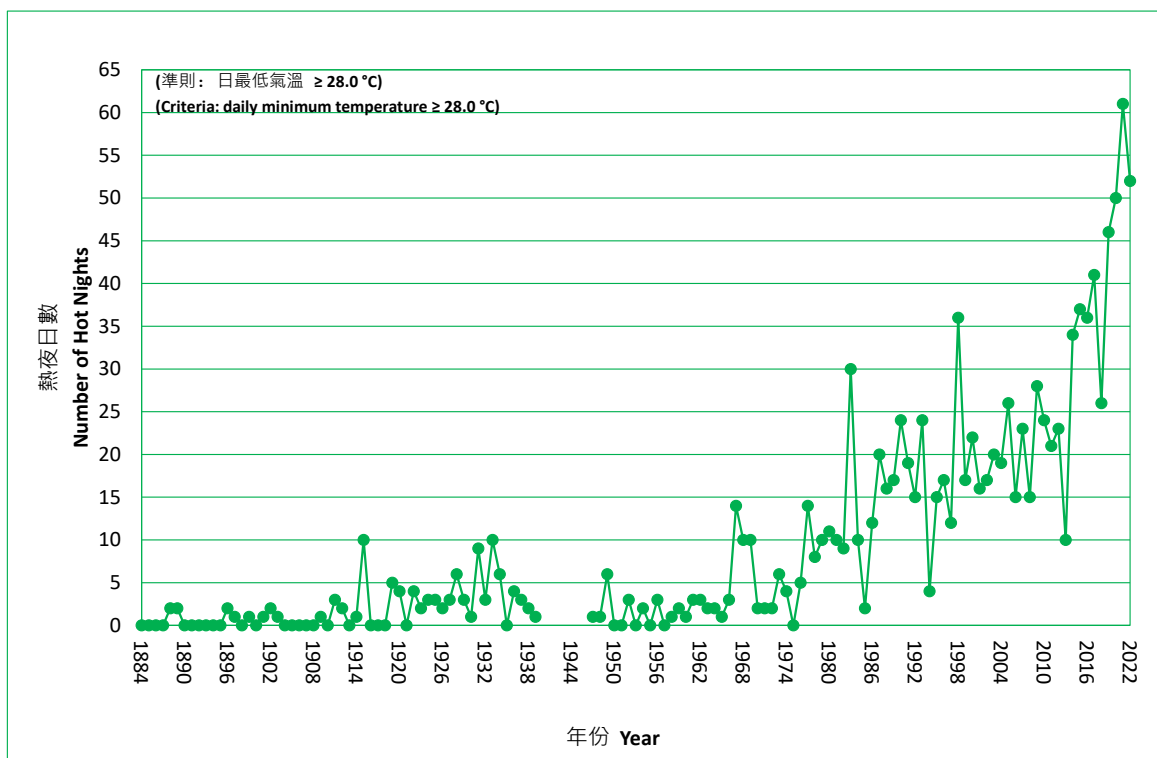


Figure 2 Long-term time series of number of hot nights in Hong Kong (1884-2022)

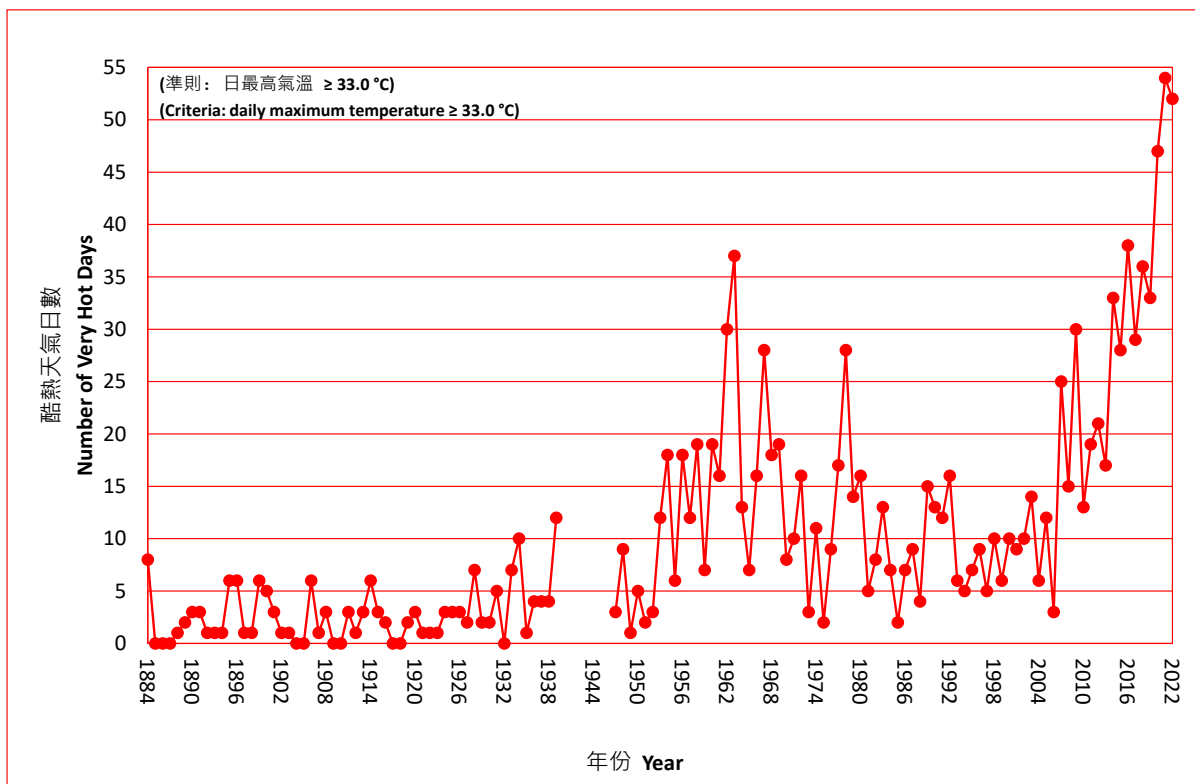


Figure 3 Long-term time series of number of very hot days in Hong Kong (1884-2022)

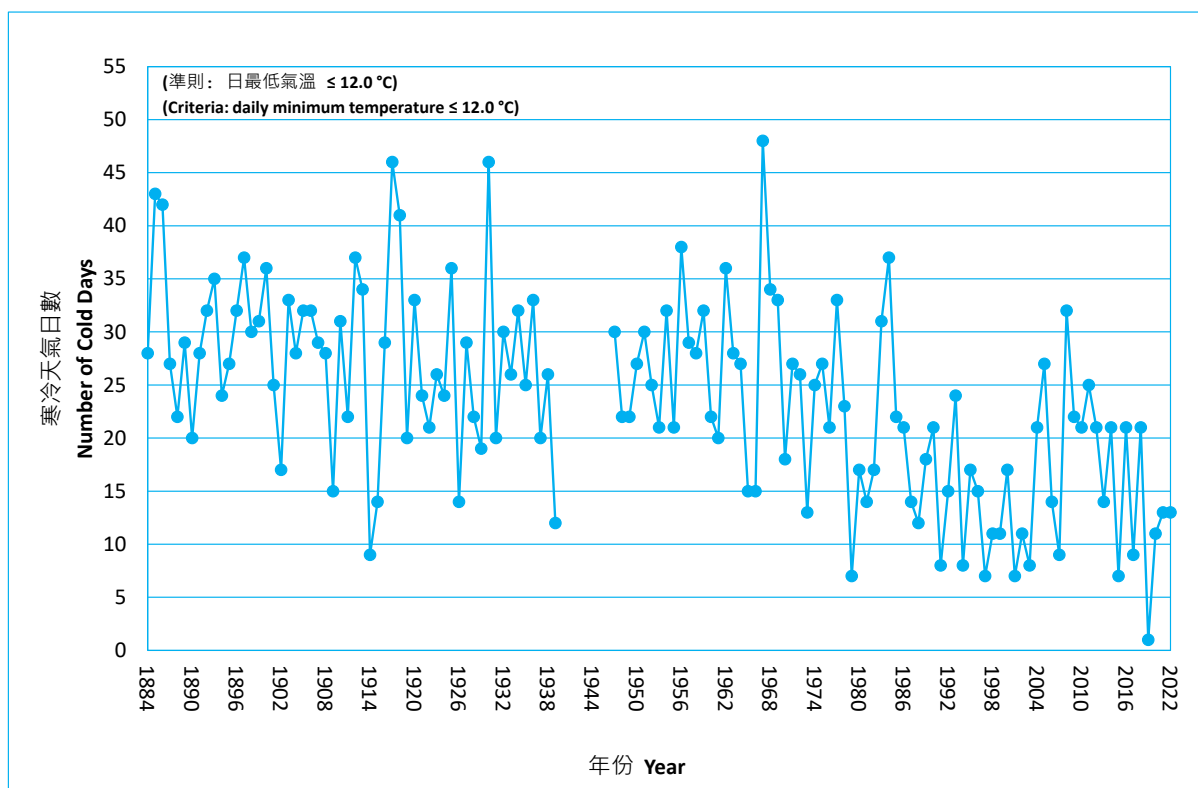


Figure 4 Long-term time series of number of cold days in Hong Kong (1884-2022)

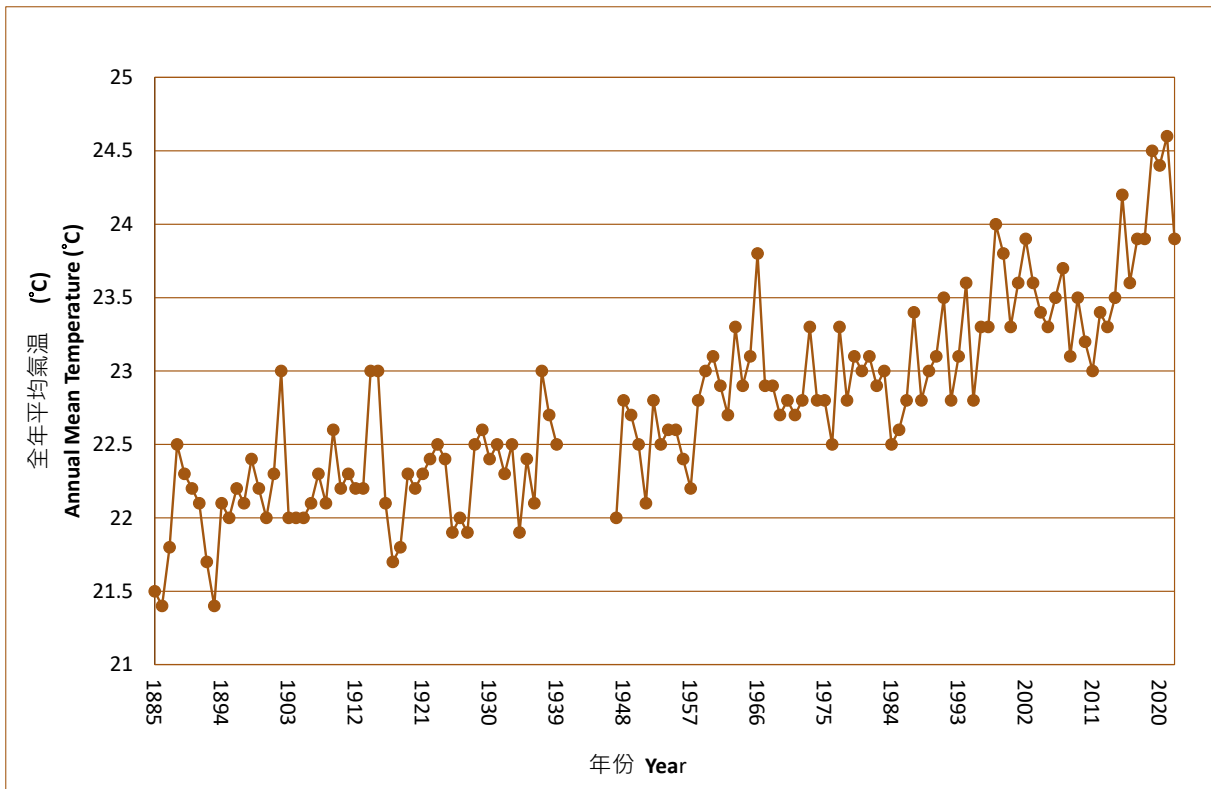


Figure 5 Long-term time series of annual mean temperature in Hong Kong (1885-2022)

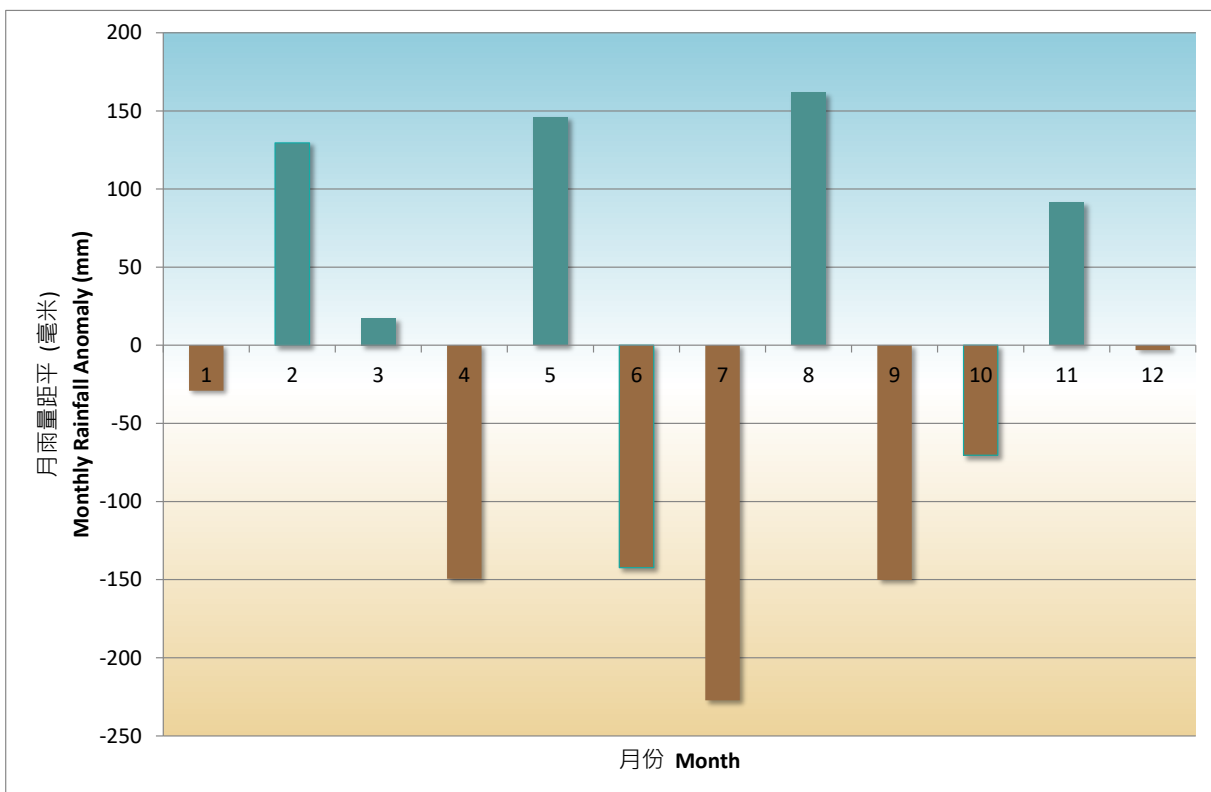


Figure 6 Monthly rainfall anomalies (against the 1991-2020 normal) in Hong Kong in 2022

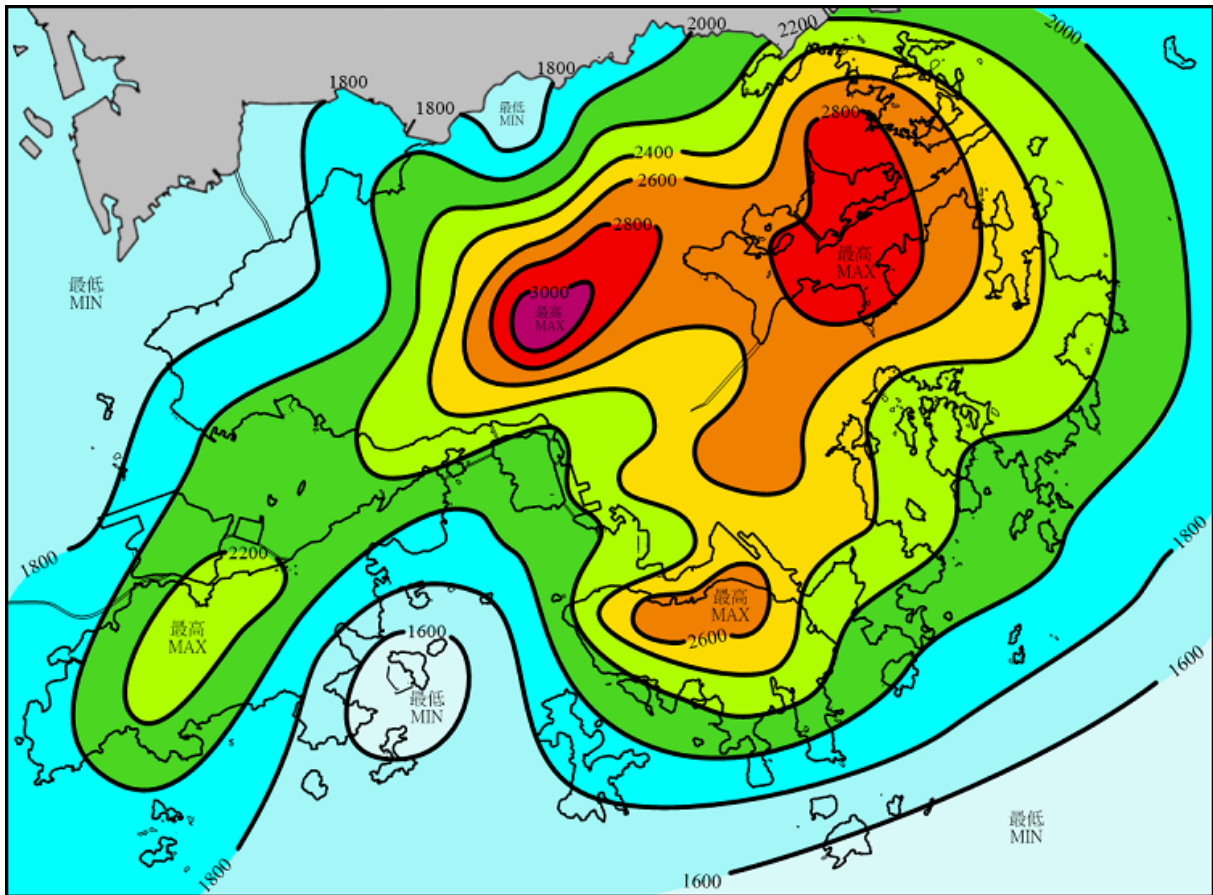


Figure 7 Annual rainfall distribution in Hong Kong in 2022 (in millimetres)