



醫務衛生局
Health Bureau

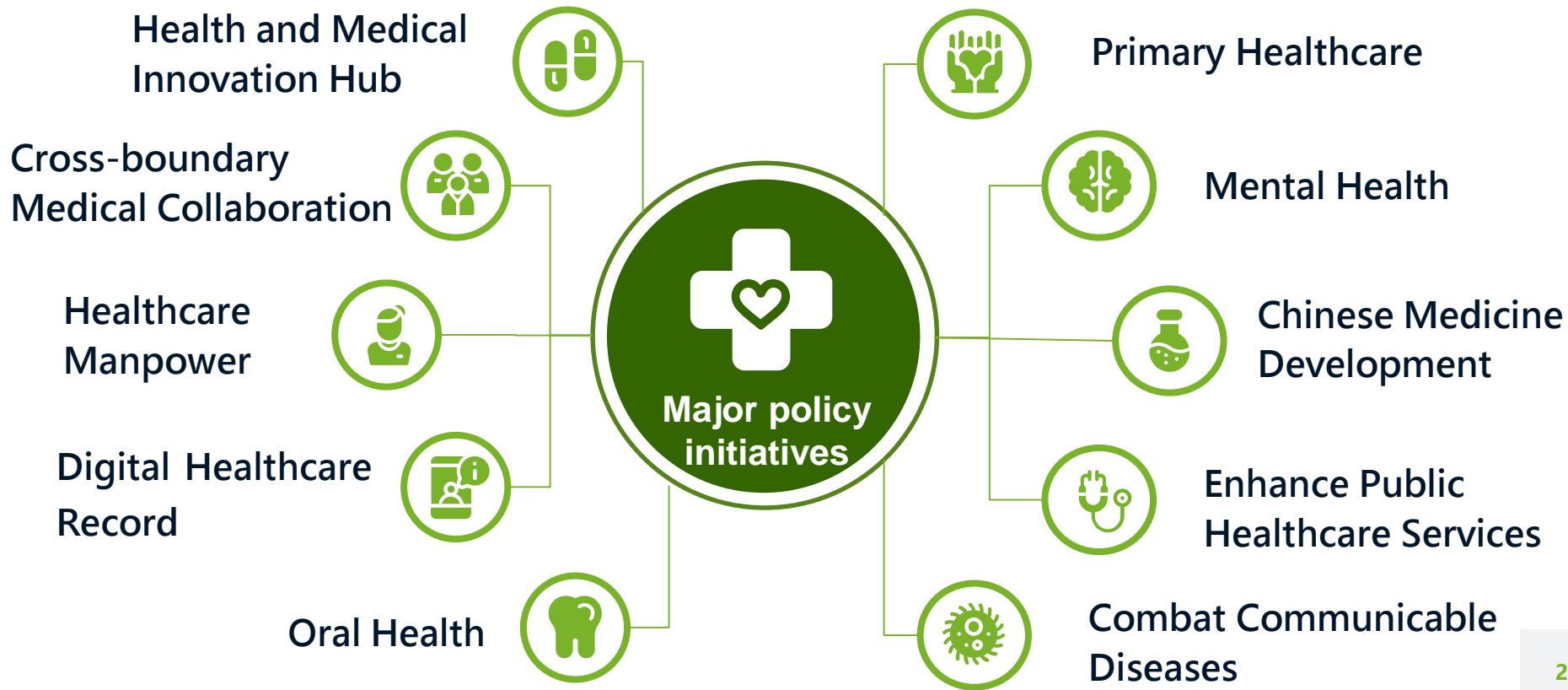
Presentation on healthcare-related initiatives

**The Chief Executive's
2023 Policy Address**

拼經濟謀發展
惠民生添幸福

27.10.2023

Health Bureau - Major policy initiatives



Health and Medical Innovation Hub – Key objectives



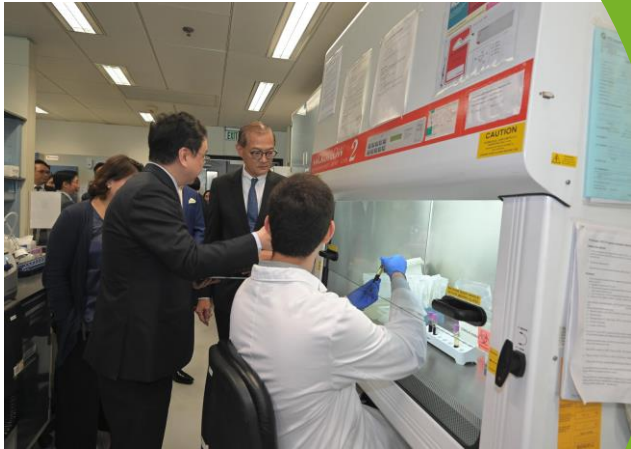
**Quality drugs and R&D to benefit
Hong Kong citizens**



**Promote industry development
through innovation and
transformation**

Health and Medical Innovation Hub

- Developing into an internationally recognised regulatory authority for drugs and medical devices



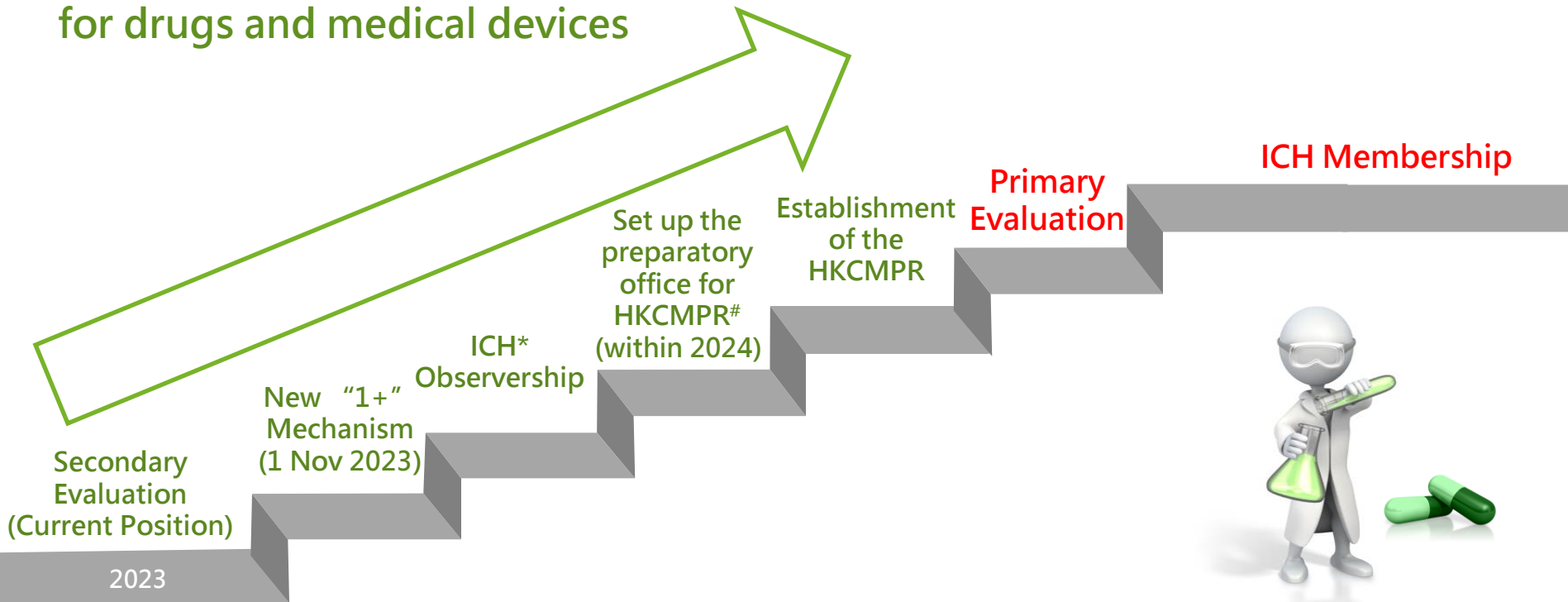
Establish new "1+" pharmaceutical product registration mechanism towards primary evaluation

Prepare for setting up of "Hong Kong Centre for Medical Products Regulation" (CMPR)

Accession to the International Council for Harmonisation of Technical Requirements for Pharmaceuticals for Human Use (ICH)

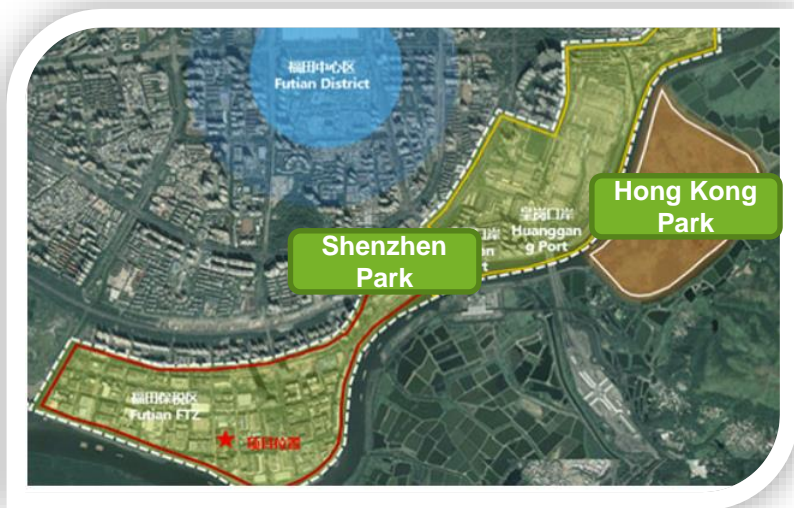
Health and Medical Innovation Hub (cont'd)

Developing into an internationally recognised regulatory authority for drugs and medical devices



Health and Medical Innovation Hub (cont'd)

- Establish the “Greater Bay Area International Clinical Trial Institute”



Located at Hetao SZ-HK Science and Technology Innovation Co-operation Zone

“One Zone, Two Parks” : coordinated development with SZ Park

Facilitate flow of personnel, data and samples between Parks

Shared facilities: data bank, sample bank and laboratories

As the window for “Bringing In and Going Global”

Health and Medical Innovation Hub (cont'd)

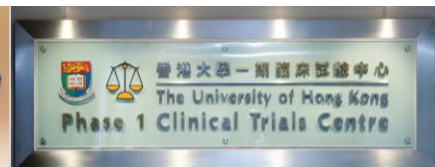
- Promote Clinical Research and Trials Under the HA

Establish Cluster
Clinical Research
Support Office

Expedite ethics
review process of
clinical research

Encourage
participation in
clinical research
and trials by
medical teams

Strengthen data
sharing system
and mechanism



Cross-boundary Medical Collaboration



Launch **Elderly Health Care Voucher GBA Pilot Scheme** within 2024



Make best use of healthcare services in **GBA**



Strengthen **two-way training and exchange of healthcare talents** between the Mainland and HK



Provide **cross-boundary point-to-point ambulance** service



Cross-boundary Medical Collaboration (cont'd)



Launch **Elderly Health Care Voucher GBA Pilot Scheme** within 2024

Elderly Health Care Voucher GBA Pilot Scheme

Selection Criteria of Medical Institutions

- Located in GBA cities with a close relationship with the elderly from HK and where the elderly visit frequently
- With assurance of good accreditation, management and operation experience
- With understanding of the operation of the Elderly Health Care Voucher Scheme
- HK-funded / HK Management Style or High Quality Medical Institutions (e.g. 3A hospitals)

Healthcare Manpower

Increase Healthcare Manpower Supply



Press ahead with legislative amendments for admitting qualified **non-locally trained dentists and nurses**



Explore the admission of **non-locally trained supplementary healthcare professionals** to serve in Hospital Authority and the Department of Health

Digital Healthcare Record



Stages 1 & 2 Development 2009-2022

- eHR sharing platform (2016)
- eHealth App (2021)

eHealth Today 2023

- **About 5.8 million registrants**
- **Over 3.1 million eHealth App downloads**
- **Over 180,000 records accessed per month**

eHealth + 2024-2028

- **Comprehensive healthcare information infrastructure** for data sharing, service support and care journey management

Digital Healthcare Record (Cont'd)

醫健通
eHealth+

One Digital Health Record

- Deposit health record of residents into personal accounts
- Portable cross-boundary digital health record

One Care Journey

- Manage medical services (e.g. booking, e-prescription, e-referral, e-certificate and Govt subsidised programmes, etc.)



One Digital Front Door to Empowering Tools

- Personal health monitoring
- Citywide health challenges

One Health Data Repository

- Consolidate health data to support medical and clinical research and health policy formulation

Oral Health

In line with strategies of Primary Healthcare Blueprint

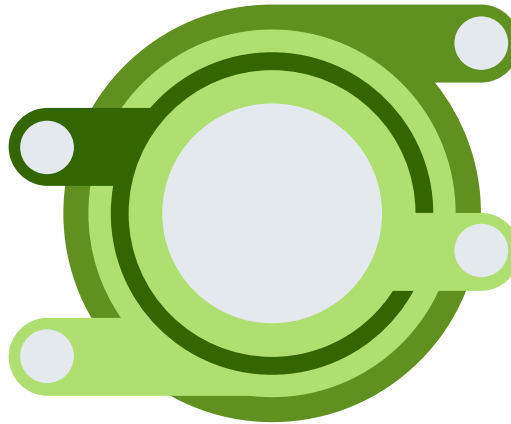


Objective : to retain natural teeth and enhance the overall level of citizens' oral health

Tooth decay of students significantly reduced (1.5 teeth to 0.4) by the preventive approach of School Dental Care Service

Define vulnerable groups for provision of targeted dental services

Collaborate with NGOs and private sector, make use of electronic health records



Promote primary dental care to prevent dental diseases for all age groups

Review dental professionals' manpower supply, training arrangements and service scope

Oral Health (cont'd)



In
2025

Launch the **Primary Dental Co-care Pilot Scheme for Adolescents** to promote the habit of regular dental check-up upon leaving the School Dental Care Service by providing subsidy

In
2025

Collaborate with NGOs to increase **emergency dental service quota to those with financial difficulties** covering all 18 districts

In
2024

Enhance the **special care dental service** currently provided by Department of Health to **persons with disabilities and special needs** with **900 quota for new patients** per year

Q3
2024

Enhance the **Elderly Dental Assistance Programme under the Community Care Fund** to allow more eligible elderly persons to receive dental services such as dental check-up, scaling, fillings and extractions

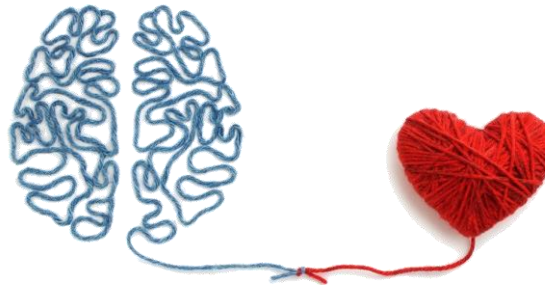
Primary Healthcare

- Primary Healthcare Blueprint launched in end of 2022
- Launch Chronic Disease Co-Care Pilot Scheme and Elderly Health Care Voucher Pilot Reward Scheme in mid-November in tandem
- More than 300 doctors have applied to join the CDCC Pilot Scheme at the current stage
- Establish Primary Healthcare Commission in 2024



Mental Health

- District Health Centres will introduce pilot scheme to provide **mental health assessment** for the public
- Set up a service centre on a trial basis to provide emotional support and counselling services for **ethnic minorities**
- Mental health **support hotline**



Chinese Medicine Development

- Promote **testing of and scientific research on Chinese medicines**, launch “Digitalised Chinese Medicines Information Platform” in early 2024
- Formulate the **Chinese Medicine Development Blueprint**
- Strengthen **integrated Chinese-Western medicine services** and expand to more disease areas
- Facilitate **Hong Kong Chinese Medicine Hospital** to establish strategic cooperation mechanism with a Mainland Chinese medicine hospital



Enhance Public Healthcare Services

Enhance Specialist Out-patient Services

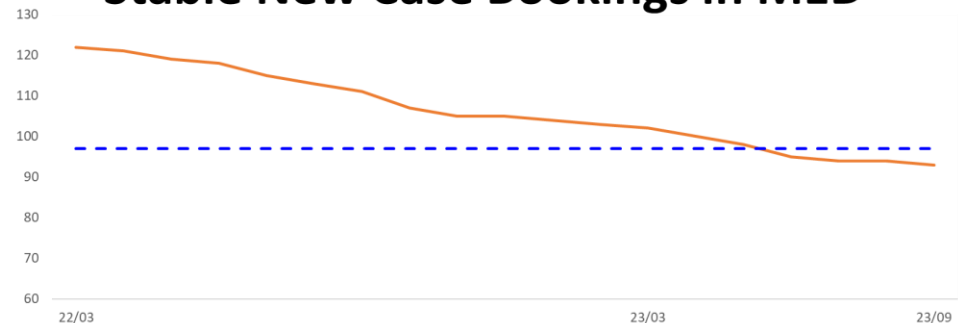
Improve Patient Experience (As at Sep 2023)

- 83% patients from registration to doctor consultation within 60 mins
- 80% patients from registration to medication collection within 120 mins

Shorten Waiting Time for Specialist Out-patient Services

- Target to shorten Medicine Specialist Out-patient Clinics (SOPCs) stable new case waiting time by 20% by 2023/24
- Medicine SOPC stable new case waiting time has been shortened from 122 weeks to latest 93 weeks

Waiting Time of SOP Stable New Case Bookings in MED



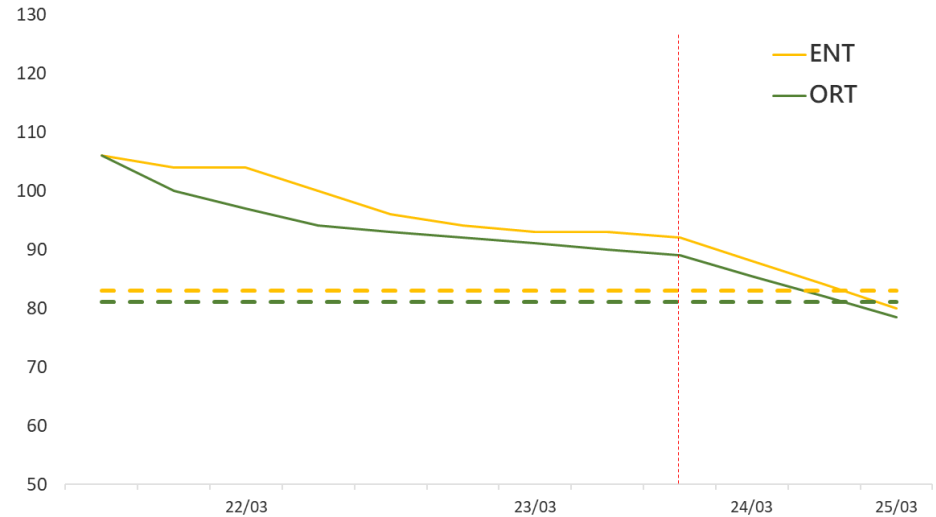
Enhance Public Healthcare Services (cont'd)

Enhance Specialist Out-patient Services

Shorten Waiting Time for Ear, Nose and Throat (ENT) and Orthopaedics and Traumatology (ORT) Specialist Out-patient Services

- Increasing service demand for stable new cases of ENT and ORT services due to ageing population
- Target to shorten ENT and ORT SOP stable new case waiting time by 10% in 2024/25

Expected Trend of Waiting Time of SOP Stable New Case Bookings in ENT and ORT

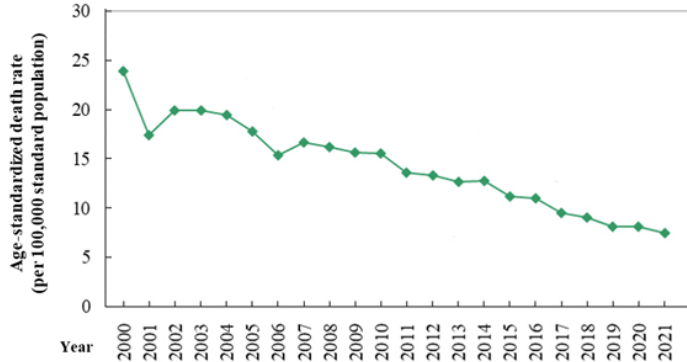


Enhance Public Healthcare Services (cont'd)

Establish Hong Kong's First Chest Pain Centre

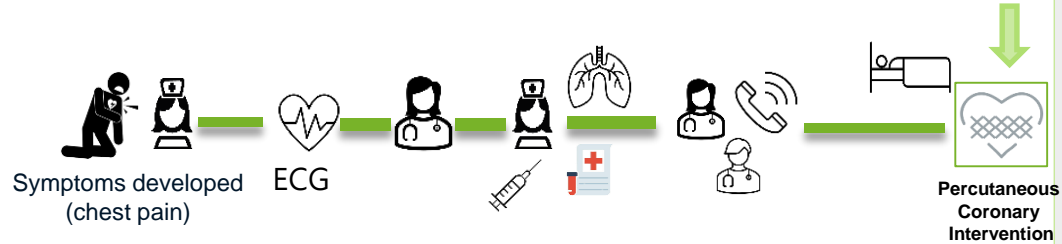
Challenges

Age-standardized Death Rate due to Acute Myocardial Infarction, 2000 - 2021



(Source: www.health.gov.hk - Coronary Heart Disease)

Chest Pain Centre



Green Channel



Streamline patient journey, shorten the "Door-to-wire time" & further decrease mortality

Target: Door to wire time ≤ 90min (>75% patients)

Enhance Public Healthcare Services (cont'd)

Set Up Breastmilk Bank

- Setting up a breastmilk bank in Hong Kong Children's Hospital to benefit extremely preterm infants
 - Reduce incidence of late-onset sepsis and necrotising enterocolitis
 - Reduce stay in Neonatal Intensive Care Unit
- Plan to collect 600L-850L donated breastmilk for benefitting around 450-600 extremely preterm infants annually



Enhance Public Healthcare Services (cont'd)

Implement Hospital Accreditation Programme

Through participation in national hospital accreditation standards

- Uphold quality of hospital services with reference to international standards
- Interfacing with other hospitals across the Greater Bay Area



Hospital Management



Patient Safety



Drug Safety



Clinical Pathway



Infection Control

Enhance Public Healthcare Services (cont'd)

Implement Hospital Accreditation Programme

Enhance communication and support to frontline staff

1. Focus on continuous improvement rather than performance assessment
2. Strengthen central coordination and enhance use of Information Technology
3. Reduce repetitive processes and integrate them into daily work



 重新醫院認證計劃
Resumption of
Hospital Accreditation

Resource Library

Patient-centred care:
醫院建立以患者為中心，注重醫療質量安全建設，並根據於醫院服務理念的特色價值取向和行為守則；醫院有臨床治理和質量安全管理體系，質量管理與行政、科用設置相制，院長負責制與醫院質量管理活動，指導與協調質量與安全管理體系正常運轉，並有成效。

The hospital builds a patient-centred culture and pays attention to clinical quality and safety which is rooted in its values and code of conduct. It has a clinical care and quality and safety management system. It implements a two-tier hospital-and-department accountability mechanism. The Hospital Chief Executive (HCE) is responsible for formulating quality programmes for the hospital, directing and coordinating quality and safety management policy to ensure normal and effective operation.

Policies and Guidelines

HAHQ

- Organisation-wide Risk Management
- Operations Circular 30/2015 - Organisation-wide Risk Management Policy and Strategy
- HA Organisation-wide Risk Management Framework
- Summary of HA Risk Guides and Tools
- Guides
- Tools

Strengthen Capacity to Combat Communicable Diseases

- Sense of crisis: better prepare for emerging communicable diseases
- Hong Kong Jockey Club will provide \$3 billion to support

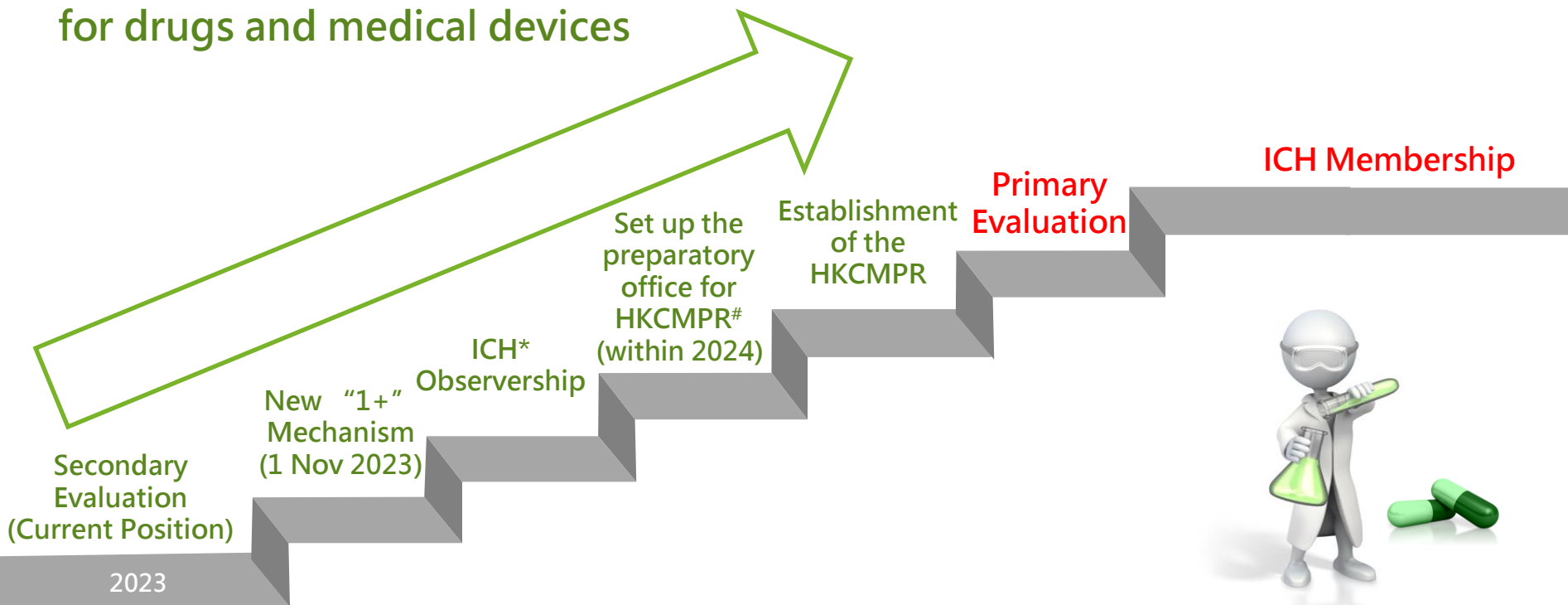


- Local programmes include:

- (i) Enhancing surveillance, data analytics and early warning for communicable diseases; and strengthening the joint disease prevention and control with the Mainland
- (ii) Strengthening epidemic response capacity building
- (iii) Promote research on prevention and response to emerging communicable diseases

Health and Medical Innovation Hub (cont'd)

Developing into an internationally recognised regulatory authority for drugs and medical devices



Towards Primary Evaluation Mechanism for Medical Products

- Establish new “1+” mechanism to accelerate the evaluation of new drugs

“Quality drugs for local use”

Evidence-based

Applicable to new drugs for life-threatening or severely-debilitating diseases

“1” : only require One registration approval from reference drug regulatory authority (instead of the original two)

“+” fulfillment of local clinical data requirement and endorsement by local experts

To take effect on November 1

An important step towards “primary evaluation” in the long run



Towards Primary Evaluation Mechanism for Medical Products (Cont'd)

CMPR (Centre for Medical Products Regulation)

"R&D"
for
public



- Integrate the regulation of drugs and medical devices
- Optimise the use of professional expertise
- Offer synergistic effects



- Support the evaluation of innovative products
- Drive technology advancement in medical products
- Offer new treatments and drugs to patients

Advancement
of
Healthcare

Towards Primary Evaluation Mechanism for Medical Products (cont'd)

▫ Accession to ICH

The goal is become an internationally recognised regulatory authority

Already applied for accession to ICH as an observer with the full support from National Medical Products Administration (NMPA)

To become ICH regulatory member in the long run



