

香港仔隧道實施易通行

Implementation of **HKeToll**
at the **Aberdeen Tunnel**

實施日期及時間 FROM



2023年12月24日
24 December 2023



05:00 上午
AM

立即行動 Action Now

1



申請及安裝車輛貼
Apply for and install a
vehicle tag

2



開立易通行戶口
Sign up for an HKeToll account

3



設定自動繳費方式
Set up auto payment

不用停車 易通行繳費

No Stopping Pay with **HKeToll**

實施易通行 Implementation of HKeToll

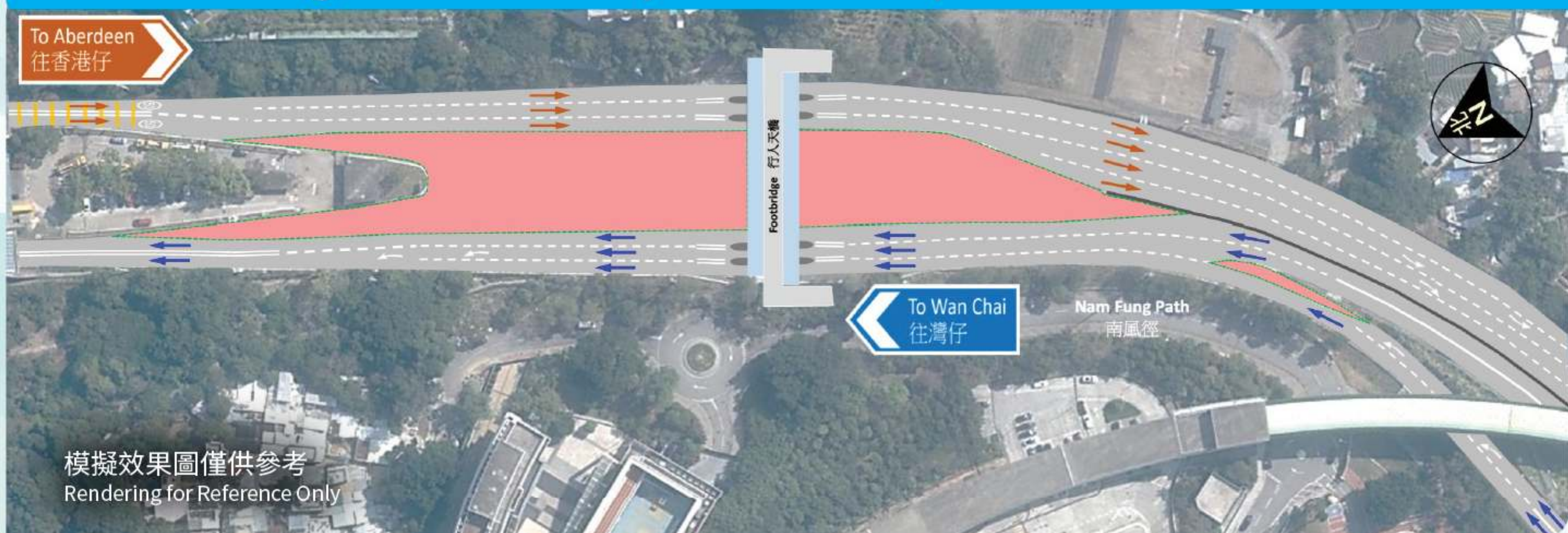
- 易通行不停車繳費服務於**12月24日(星期日)上午5時**在香港仔隧道實施。
- 所有**人手收費亭及快易通車道**將會取消，改以**易通行遙距繳交隧道費**。
- Free-Flow tolling service, **HKeToll**, will be implemented at the **Aberdeen Tunnel** from **5 am on 24 December (Sunday)**.
- All **manual toll booths** and **Autotoll lanes** will be **decommissioned**. Toll will be collected remotely via **HKeToll**.

臨時交通及運輸安排 Temporary Traffic and Transport Arrangements

- 臨時交通安排會在**12月24日(星期日)凌晨1時至上午5時**實施，部分行車線及收費亭將會封閉。
- 香港仔隧道來回方向及往香港仔隧道的支路於**12月24日(星期日)約凌晨4時至上午5時**臨時封閉。
- 香港仔隧道的交通可能會較擠塞，駕車人士請預留充足的時間，並使用其他替代路線。
- 香港仔隧道臨時封閉期間，通宵**巴士**路線第**N72、N90、N170及N171**號線將會**改道行經南風道、深水灣道、黃泥涌峽道及跑馬地一帶**，而港島通宵**專線小巴**路線第**N4A、N4C及N40**號線將會**改道行經南風道、深水灣道、黃泥涌峽道及司徒拔道**。
- 駕駛人士請遵從在場職員指示及臨時交通安排，小心駕駛及保持忍讓。
- Temporary traffic arrangements will be implemented from **1 am to 5 am on 24 December (Sunday)**. Some of the traffic lanes and toll booths will be closed.
- Both bounds of the Aberdeen Tunnel and the slip roads leading to the Aberdeen Tunnel will be **closed from around 4 am to 5 am on 24 December (Sunday)**.
- The traffic at the Aberdeen Tunnel may be congested. Motorists should allow sufficient travelling time and use alternative routes.
- During the closure of the Aberdeen Tunnel, overnight **bus** route Nos. **N72, N90, N170 and N171** will be **diverted via Nam Fung Road, Deep Water Bay Road, Wong Nai Chung Gap Road and the vicinity of Happy Valley**, while Hong Kong Island overnight **green minibus** route Nos. **N4A, N4C and N40** will be **diverted via Nam Fung Road, Deep Water Bay Road, Wong Nai Chung Gap Road and Stubbs Road**.
- Motorists should follow the instructions of on-site staff and the temporary traffic arrangements, and drive with utmost care and patience.

實施易通行後收費廣場的交通安排

Traffic arrangements at toll plaza after implementation of HKeToll



航拍圖片來源：香港特別行政區政府地政總署 Source of Aerial Photo: Lands Department, the Government of the HKSAR

- 易通行實施後，收費廣場一帶會**繼續實施臨時交通安排**，以移除收費亭及進行道路工程。
- 駕駛人士應留意現場情況及小心駕駛。
- 現時**每小時50公里**的車速限制將維持不變。
- Upon implementation of the HKeToll, **temporary traffic arrangements will continue to be implemented** at the toll plaza, to facilitate the removal of toll booths and road works.
- Motorists should pay attention to on-site situation and drive safely.
- The existing **speed limit of 50 km/h** will remain unchanged.

以上圖片僅供參考之用。The above images are for reference only.

服務受條款及細則約束，詳情請參閱易通行網站。Terms and conditions apply, please visit HKeToll website for details.