

Table 1 Consumer Price Indices and Year-on-year Rates of Change  
at Section Level for April 2024  
(Oct. 2019 - Sep. 2020 = 100)

Section	Composite CPI		CPI(A)		CPI(B)		CPI(C)	
	Index for Apr 2024	% change over Apr 2023	Index for Apr 2024	% change over Apr 2023	Index for Apr 2024	% change over Apr 2023	Index for Apr 2024	% change over Apr 2023
Food	110.4	+1.8	110.1	+1.7	110.6	+1.9	110.8	+1.8
<i>Meals out and takeaway food</i>	112.3	+3.1	112.6	+3.4	112.3	+3.1	111.9	+2.8
<i>Basic food</i>	107.4	-0.4	106.6	-0.7	107.5	-0.3	108.6	-0.2
Housing #	101.9	+1.0	106.0	+1.3	99.9	+0.7	99.7	+0.8
<i>Private housing rent</i>	98.4	+0.4	98.7	+0.5	98.2	+0.4	98.4	+0.4
<i>Public housing rent</i>	149.1	+1.2	149.1	+1.2	148.6	+1.3	-	-
Electricity, gas and water	128.7	-9.3	131.2	-9.1	127.2	-9.2	125.0	-9.8
Alcoholic drinks and tobacco	145.9	+20.8	154.0	+23.4	141.1	+19.2	130.2	+15.6
Clothing and footwear	115.4	+0.6	113.6	+0.1	115.0	+0.4	117.1	+1.1
Durable goods	97.9	-0.8	96.5	-1.4	97.3	-0.9	99.8	-0.3
Miscellaneous goods	100.5	+1.1	99.9	+1.0	100.4	+1.0	101.4	+1.3
Transport	108.2	+1.8	104.9	+2.9	108.4	+1.9	110.3	+0.9
Miscellaneous services	106.7	+2.2	104.6	+1.7	106.8	+2.2	108.0	+2.4
<i>Selected major groups</i>								
<i>Educational services</i>	109.8	+3.8	108.1	+3.1	109.5	+3.6	111.1	+4.2
<i>Information and communications services</i>	94.5	-1.1	93.9	-1.5	94.9	-0.9	95.1	-0.6
<i>Medical services</i>	111.1	+5.3	111.1	+5.2	111.3	+5.5	110.8	+5.2
<b>All items</b>	<b>106.4</b>	<b>+1.1</b>	<b>108.2</b>	<b>+1.1</b>	<b>105.4</b>	<b>+1.0</b>	<b>105.6</b>	<b>+1.1</b>

- Not applicable

**Note:**

The CPI(A), CPI(B) and CPI(C) are compiled with reference to the average expenditure patterns of different groups of households as obtained from the Household Expenditure Survey. By aggregating the expenditure patterns of all households covered by the above three indices, a Composite CPI is also compiled.

The expenditure ranges of the households covered in the 2019/20-based CPI series are as follows:

	Approximate percentage of households covered	Average monthly household expenditure range (at 2019/20 prices)	Average monthly household expenditure range (adjusted to 2023 prices)
	(%)	(\$)	(\$)
CPI(A)	50	6,500 - 27,999	6,800 - 29,200
CPI(B)	30	28,000 - 48,499	29,200 - 50,400
CPI(C)	10	48,500 - 91,999	50,400 - 95,900
Composite CPI	90	6,500 - 91,999	6,800 - 95,900

# Apart from "Private housing rent" and "Public housing rent", the "Housing" section also includes "Management fees and other housing charges".

Table 2 Movements of Consumer Price Indices, April 2022 - April 2024

		CPI			
		Year-on-year rate of change (%)			
<u>Year/month</u>	<u>Composite CPI</u>	<u>CPI(A)</u>	<u>CPI(B)</u>	<u>CPI(C)</u>	
2022 Apr	+1.3 (+1.6)	+1.1 (+1.6)	+1.3 (+1.5)	+1.6 (+1.7)	
May	+1.2 (+1.7)	+0.8 (+1.7)	+1.3 (+1.7)	+1.6 (+1.8)	
Jun	+1.8 (+1.8)	+1.8 (+1.8)	+1.7 (+1.7)	+2.0 (+2.0)	
Jul	+1.9 (+1.9)	+1.9 (+1.9)	+1.8 (+1.8)	+2.0 (+2.0)	
Aug	+1.9 (+1.8)	+1.9 (+1.8)	+1.8 (+1.8)	+1.9 (+1.9)	
Sep	+4.4 (+1.8)	+8.9 (+1.8)	+2.4 (+1.7)	+1.9 (+1.9)	
Oct	+1.8 (+1.7)	+2.0 (+1.7)	+1.7 (+1.6)	+1.8 (+1.8)	
Nov	+1.8 (+1.7)	+1.8 (+1.8)	+1.7 (+1.7)	+1.8 (+1.8)	
Dec	+2.0 (+2.0)	+2.1 (+2.1)	+1.9 (+1.9)	+2.0 (+2.0)	
2023 Jan	+2.4 (+2.4)	+2.6 (+2.6)	+2.3 (+2.2)	+2.4 (+2.4)	
Feb	+1.7 (+1.7)	+1.7 (+1.7)	+1.6 (+1.6)	+1.8 (+1.8)	
Mar	+1.7 (+1.7)	+1.7 (+1.7)	+1.6 (+1.6)	+1.9 (+1.9)	
Apr	+2.1 (+1.8)	+2.2 (+1.9)	+2.0 (+1.7)	+2.1 (+1.8)	
May	+2.0 (+1.8)	+2.2 (+1.9)	+1.9 (+1.6)	+2.0 (+1.8)	
Jun	+1.9 (+1.7)	+2.1 (+1.8)	+1.9 (+1.6)	+1.8 (+1.6)	
Jul	+1.8 (+1.6)	+1.9 (+1.6)	+1.8 (+1.5)	+1.8 (+1.6)	
Aug	+1.8 (+1.5)	+1.8 (+1.5)	+1.7 (+1.4)	+1.8 (+1.6)	
Sep	+2.0 (+1.8)	+2.1 (+1.8)	+2.0 (+1.7)	+2.1 (+1.9)	
Oct	+2.7 (+1.7)	+3.2 (+1.7)	+2.5 (+1.7)	+2.4 (+1.9)	
Nov	+2.6 (+1.6)	+3.0 (+1.4)	+2.4 (+1.6)	+2.4 (+1.9)	
Dec	+2.4 (+1.4)	+2.7 (+1.1)	+2.2 (+1.4)	+2.3 (+1.8)	
2024 Jan	+1.7 (+0.8)	+2.0 (+0.5)	+1.6 (+0.8)	+1.5 (+1.0)	
Feb	+2.1 (+1.2)	+2.3 (+0.8)	+2.0 (+1.2)	+2.0 (+1.6)	
Mar	+2.0 (+1.0)	+2.3 (+0.8)	+1.9 (+1.1)	+1.7 (+1.3)	
Apr	+1.1 (+0.9)	+1.1 (+0.8)	+1.0 (+1.0)	+1.1 (+1.1)	

( ) Denotes the rate of change after netting out the effects of Government's one-off relief measures affecting CPIs, such as the rates concession and provision of electricity charges allowance. For details about the one-off relief measures, please refer to Annex 2 of the Explanatory Notes in Part 5 of the "Monthly Report on the Consumer Price Index" on the C&SD's website.

Table 3 Movements of Seasonally Adjusted Consumer Price Indices, April 2022 - April 2024

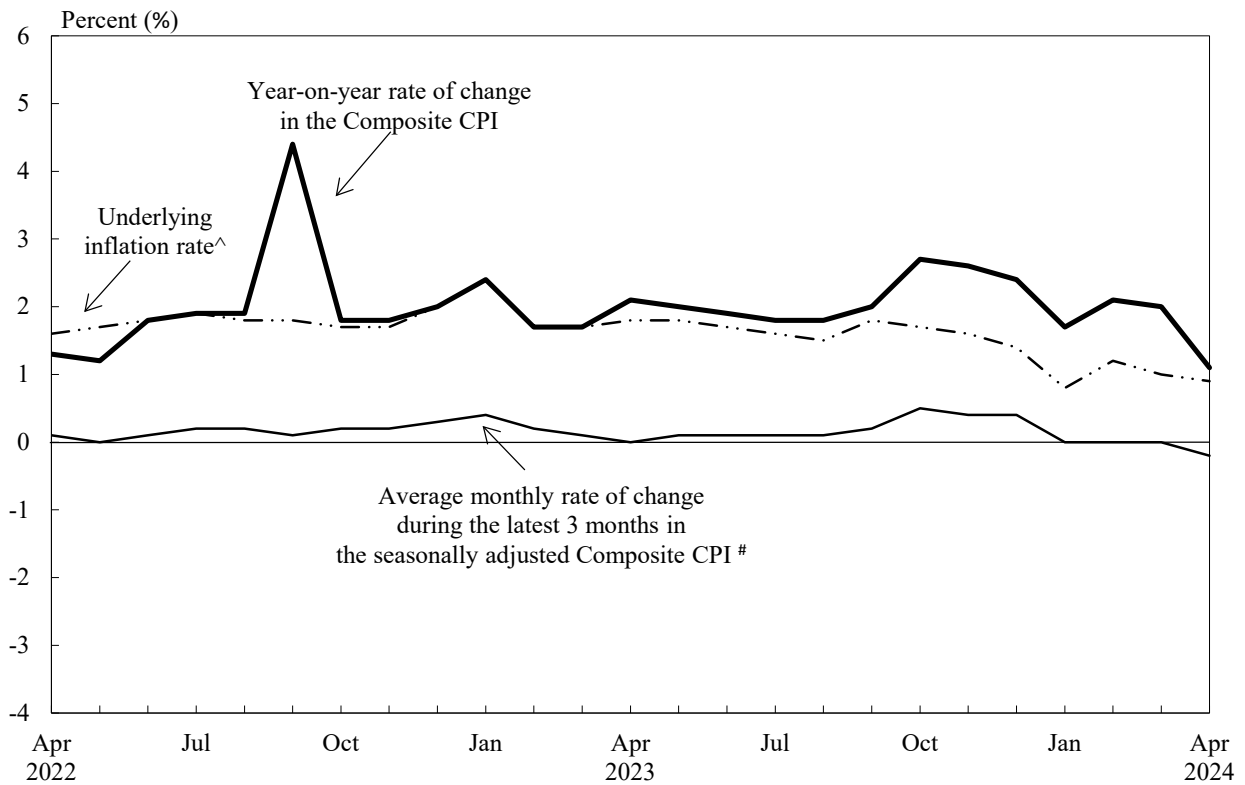
Seasonally adjusted CPI #				
Average monthly rate of change during the latest 3 months (%)				
<u>Year/month</u>	<u>Composite CPI</u>	<u>CPI(A)</u>	<u>CPI(B)</u>	<u>CPI(C)</u>
2022 Apr	+0.1 (+0.2)	+0.1 (+0.2)	+0.1 (+0.1)	+0.1 (+0.2)
May	* (+0.2)	-0.1 (+0.1)	* (+0.2)	+0.1 (+0.2)
Jun	+0.1 (+0.1)	* (+0.1)	+0.1 (+0.1)	+0.1 (+0.2)
Jul	+0.2 (+0.2)	+0.2 (+0.2)	+0.2 (+0.2)	+0.2 (+0.2)
Aug	+0.2 (+0.2)	+0.3 (+0.2)	+0.2 (+0.1)	+0.2 (+0.2)
Sep	+0.1 (+0.1)	+0.1 (+0.1)	+0.1 (+0.1)	+0.1 (+0.1)
Oct	+0.2 (+0.1)	+0.2 (+0.1)	+0.2 (+0.1)	+0.2 (+0.1)
Nov	+0.2 (+0.1)	+0.2 (+0.1)	+0.2 (+0.1)	+0.2 (+0.1)
Dec	+0.3 (+0.2)	+0.3 (+0.2)	+0.3 (+0.2)	+0.2 (+0.2)
2023 Jan	+0.4 (+0.4)	+0.3 (+0.3)	+0.3 (+0.3)	+0.3 (+0.3)
Feb	+0.2 (+0.2)	+0.2 (+0.2)	+0.1 (+0.1)	+0.2 (+0.2)
Mar	+0.1 (+0.1)	+0.1 (+0.1)	+0.1 (+0.1)	+0.1 (+0.1)
Apr	* (*)	* (*)	* (*)	* (*)
May	+0.1 (+0.2)	+0.1 (+0.2)	+0.1 (+0.2)	+0.1 (+0.2)
Jun	+0.1 (+0.1)	+0.1 (+0.1)	+0.1 (+0.1)	+0.1 (+0.1)
Jul	+0.1 (+0.1)	+0.1 (+0.1)	+0.1 (+0.1)	+0.1 (+0.1)
Aug	+0.1 (+0.1)	+0.2 (+0.1)	+0.1 (+0.1)	+0.1 (+0.1)
Sep	+0.2 (+0.1)	+0.1 (+0.1)	+0.1 (+0.1)	+0.2 (+0.2)
Oct	+0.5 (+0.1)	+0.6 (+0.1)	+0.4 (+0.2)	+0.4 (+0.2)
Nov	+0.4 (+0.1)	+0.6 (+0.1)	+0.4 (+0.1)	+0.3 (+0.2)
Dec	+0.4 (+0.1)	+0.5 (*)	+0.3 (+0.1)	+0.3 (+0.1)
2024 Jan	* (*)	-0.1 (-0.1)	* (*)	* (*)
Feb	* (*)	-0.1 (*)	* (*)	+0.1 (+0.1)
Mar	* (*)	* (*)	* (*)	-0.1 (-0.1)
Apr	-0.2 (*)	-0.3 (+0.1)	-0.2 (*)	* (+0.1)

\* Increase or decrease of less than 0.05%

( ) Denotes the rate of change after netting out the effects of Government's one-off relief measures affecting CPIs, such as the rates concession and provision of electricity charges allowance. For details about the one-off relief measures, please refer to Annex 2 of the Explanatory Notes in Part 5 of the "Monthly Report on the Consumer Price Index" on the C&SD's website.

# Seasonally adjusted series may be revised as more data become available.

Chart 1 Movements of the Composite Consumer Price Index



^ Denotes the rate of change after netting out the effects of Government's one-off relief measures affecting CPIs, such as the rates concession and provision of electricity charges allowance. For details about the one-off relief measures, please refer to Annex 2 of the Explanatory Notes in Part 5 of the "Monthly Report on the Consumer Price Index" on the C&SD's website.

# Seasonally adjusted series may be revised as more data become available.