

Table 1 Consumer Price Indices and Year-on-year Rates of Change
at Section Level for August 2024
(Oct. 2019 - Sep. 2020 = 100)

Section	Composite CPI		CPI(A)		CPI(B)		CPI(C)	
	Index for Aug 2024	% change over Aug 2023	Index for Aug 2024	% change over Aug 2023	Index for Aug 2024	% change over Aug 2023	Index for Aug 2024	% change over Aug 2023
Food	110.3	+1.8	109.9	+2.0	110.4	+1.8	110.7	+1.6
<i>Meals out and takeaway food</i>	112.4	+2.4	112.7	+2.7	112.3	+2.3	111.9	+2.0
<i>Basic food</i>	106.8	+0.8	106.1	+0.9	106.9	+0.8	108.1	+0.8
Housing #	104.4	+3.3	109.7	+4.7	102.2	+2.9	101.3	+2.1
<i>Private housing rent</i>	100.4	+2.4	100.9	+2.7	100.3	+2.5	100.0	+1.9
<i>Public housing rent</i>	167.3	+13.6	167.4	+13.6	166.8	+13.6	-	-
Electricity, gas and water	142.0	+4.8	148.3	+7.4	138.5	+3.5	133.4	+1.0
Alcoholic drinks and tobacco	147.5	+20.8	155.8	+24.2	142.7	+18.7	131.3	+13.9
Clothing and footwear	109.9	-1.8	108.2	-2.4	109.5	-2.1	111.6	-1.0
Durable goods	98.0	-0.9	96.3	-1.2	97.3	-0.9	100.0	-0.6
Miscellaneous goods	101.0	+0.9	100.4	+0.7	101.1	+0.9	101.6	+0.9
Transport	110.7	+2.8	106.5	+2.5	110.7	+2.8	113.5	+3.1
Miscellaneous services	107.3	+2.2	104.9	+1.7	107.3	+2.2	108.8	+2.6
<i>Selected major groups</i>								
<i>Educational services</i>	110.1	+3.4	108.2	+2.8	109.7	+3.3	111.4	+3.9
<i>Information and communications services</i>	94.1	-1.1	93.5	-1.1	94.4	-1.1	94.7	-1.0
<i>Medical services</i>	111.8	+4.8	111.7	+4.4	112.0	+4.8	111.6	+5.0
All items	107.8	+2.5	110.2	+3.2	106.6	+2.2	106.6	+1.9

- Not applicable

Note:

The CPI(A), CPI(B) and CPI(C) are compiled with reference to the average expenditure patterns of different groups of households as obtained from the Household Expenditure Survey. By aggregating the expenditure patterns of all households covered by the above three indices, a Composite CPI is also compiled.

The expenditure ranges of the households covered in the 2019/20-based CPI series are as follows:

	<u>Approximate percentage of households covered</u>	<u>Average monthly household expenditure range (at 2019/20 prices)</u>	<u>Average monthly household expenditure range (adjusted to 2023 prices)</u>
	(%)	(\$)	(\$)
CPI(A)	50	6,500 - 27,999	6,800 - 29,200
CPI(B)	30	28,000 - 48,499	29,200 - 50,400
CPI(C)	10	48,500 - 91,999	50,400 - 95,900
Composite CPI	90	6,500 - 91,999	6,800 - 95,900

Apart from "Private housing rent" and "Public housing rent", the "Housing" section also includes "Management fees and other housing charges".

Table 2 Movements of Consumer Price Indices, August 2022 - August 2024

		CPI			
		Year-on-year rate of change (%)			
<u>Year/month</u>	<u>Composite CPI</u>	<u>CPI(A)</u>	<u>CPI(B)</u>	<u>CPI(C)</u>	
2022 Aug	+1.9 (+1.8)	+1.9 (+1.8)	+1.8 (+1.8)	+1.9 (+1.9)	
Sep	+4.4 (+1.8)	+8.9 (+1.8)	+2.4 (+1.7)	+1.9 (+1.9)	
Oct	+1.8 (+1.7)	+2.0 (+1.7)	+1.7 (+1.6)	+1.8 (+1.8)	
Nov	+1.8 (+1.7)	+1.8 (+1.8)	+1.7 (+1.7)	+1.8 (+1.8)	
Dec	+2.0 (+2.0)	+2.1 (+2.1)	+1.9 (+1.9)	+2.0 (+2.0)	
2023 Jan	+2.4 (+2.4)	+2.6 (+2.6)	+2.3 (+2.2)	+2.4 (+2.4)	
Feb	+1.7 (+1.7)	+1.7 (+1.7)	+1.6 (+1.6)	+1.8 (+1.8)	
Mar	+1.7 (+1.7)	+1.7 (+1.7)	+1.6 (+1.6)	+1.9 (+1.9)	
Apr	+2.1 (+1.8)	+2.2 (+1.9)	+2.0 (+1.7)	+2.1 (+1.8)	
May	+2.0 (+1.8)	+2.2 (+1.9)	+1.9 (+1.6)	+2.0 (+1.8)	
Jun	+1.9 (+1.7)	+2.1 (+1.8)	+1.9 (+1.6)	+1.8 (+1.6)	
Jul	+1.8 (+1.6)	+1.9 (+1.6)	+1.8 (+1.5)	+1.8 (+1.6)	
Aug	+1.8 (+1.5)	+1.8 (+1.5)	+1.7 (+1.4)	+1.8 (+1.6)	
Sep	+2.0 (+1.8)	+2.1 (+1.8)	+2.0 (+1.7)	+2.1 (+1.9)	
Oct	+2.7 (+1.7)	+3.2 (+1.7)	+2.5 (+1.7)	+2.4 (+1.9)	
Nov	+2.6 (+1.6)	+3.0 (+1.4)	+2.4 (+1.6)	+2.4 (+1.9)	
Dec	+2.4 (+1.4)	+2.7 (+1.1)	+2.2 (+1.4)	+2.3 (+1.8)	
2024 Jan	+1.7 (+0.8)	+2.0 (+0.5)	+1.6 (+0.8)	+1.5 (+1.0)	
Feb	+2.1 (+1.2)	+2.3 (+0.8)	+2.0 (+1.2)	+2.0 (+1.6)	
Mar	+2.0 (+1.0)	+2.3 (+0.8)	+1.9 (+1.1)	+1.7 (+1.3)	
Apr	+1.1 (+0.9)	+1.1 (+0.8)	+1.0 (+1.0)	+1.1 (+1.1)	
May	+1.2 (+1.0)	+1.2 (+0.9)	+1.1 (+1.1)	+1.2 (+1.2)	
Jun	+1.5 (+1.0)	+1.7 (+0.9)	+1.3 (+1.0)	+1.3 (+1.2)	
Jul	+2.5 (+1.2)	+3.1 (+1.0)	+2.3 (+1.2)	+2.0 (+1.4)	
Aug	+2.5 (+1.2)	+3.2 (+1.1)	+2.2 (+1.2)	+1.9 (+1.3)	

() Denotes the rate of change after netting out the effects of Government's one-off relief measures affecting CPIs, such as the rates concession and provision of electricity charges allowance. For details about the one-off relief measures, please refer to Annex 2 of the Explanatory Notes in Part 5 of the "Monthly Report on the Consumer Price Index" on the C&SD's website.

Table 3 Movements of Seasonally Adjusted Consumer Price Indices, August 2022 - August 2024

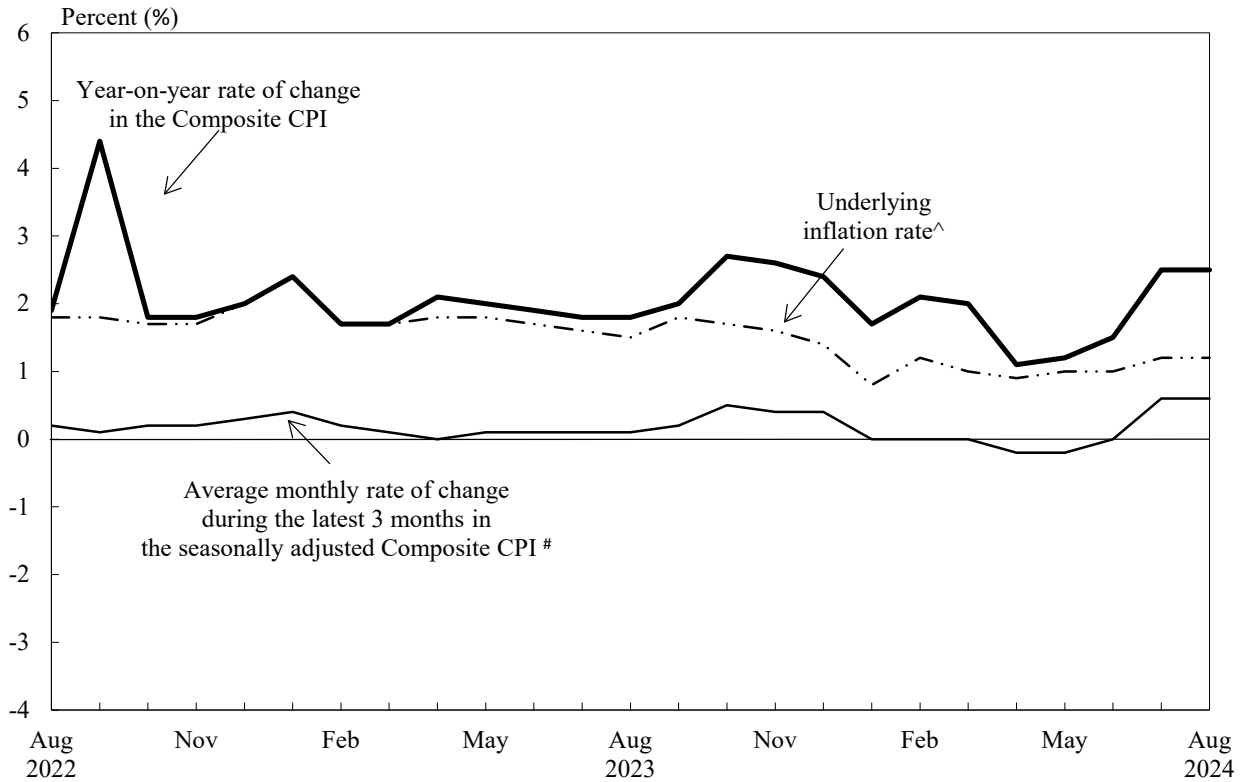
Seasonally adjusted CPI #				
Average monthly rate of change during the latest 3 months (%)				
<u>Year/month</u>	<u>Composite CPI</u>	<u>CPI(A)</u>	<u>CPI(B)</u>	<u>CPI(C)</u>
2022 Aug	+0.2 (+0.2)	+0.3 (+0.2)	+0.2 (+0.1)	+0.2 (+0.2)
Sep	+0.1 (+0.1)	+0.1 (+0.1)	+0.1 (+0.1)	+0.1 (+0.1)
Oct	+0.2 (+0.1)	+0.2 (+0.1)	+0.2 (+0.1)	+0.2 (+0.1)
Nov	+0.2 (+0.1)	+0.2 (+0.1)	+0.2 (+0.1)	+0.2 (+0.1)
Dec	+0.3 (+0.2)	+0.3 (+0.2)	+0.3 (+0.2)	+0.2 (+0.2)
2023 Jan	+0.4 (+0.4)	+0.3 (+0.3)	+0.3 (+0.3)	+0.3 (+0.3)
Feb	+0.2 (+0.2)	+0.2 (+0.2)	+0.1 (+0.1)	+0.2 (+0.2)
Mar	+0.1 (+0.1)	+0.1 (+0.1)	+0.1 (+0.1)	+0.1 (+0.1)
Apr	* (*)	* (*)	* (*)	* (*)
May	+0.1 (+0.2)	+0.1 (+0.2)	+0.1 (+0.2)	+0.1 (+0.2)
Jun	+0.1 (+0.1)	+0.1 (+0.1)	+0.1 (+0.1)	+0.1 (+0.1)
Jul	+0.1 (+0.1)	+0.1 (+0.1)	+0.1 (+0.1)	+0.1 (+0.1)
Aug	+0.1 (+0.1)	+0.2 (+0.1)	+0.1 (+0.1)	+0.1 (+0.1)
Sep	+0.2 (+0.1)	+0.1 (+0.1)	+0.1 (+0.1)	+0.2 (+0.2)
Oct	+0.5 (+0.1)	+0.6 (+0.1)	+0.4 (+0.2)	+0.4 (+0.2)
Nov	+0.4 (+0.1)	+0.6 (+0.1)	+0.4 (+0.1)	+0.3 (+0.2)
Dec	+0.4 (+0.1)	+0.5 (*)	+0.3 (+0.1)	+0.3 (+0.1)
2024 Jan	* (*)	-0.1 (-0.1)	* (*)	* (*)
Feb	* (*)	-0.1 (*)	* (*)	+0.1 (+0.1)
Mar	* (*)	* (*)	* (*)	-0.1 (-0.1)
Apr	-0.2 (*)	-0.3 (+0.1)	-0.2 (*)	* (+0.1)
May	-0.2 (+0.1)	-0.3 (+0.2)	-0.2 (+0.1)	-0.1 (*)
Jun	* (+0.1)	-0.1 (+0.2)	* (+0.1)	* (+0.1)
Jul	+0.6 (+0.2)	+0.8 (+0.2)	+0.5 (+0.2)	+0.4 (+0.2)
Aug	+0.6 (+0.2)	+0.8 (+0.2)	+0.5 (+0.1)	+0.4 (+0.2)

* Increase or decrease of less than 0.05%

() Denotes the rate of change after netting out the effects of Government's one-off relief measures affecting CPIs, such as the rates concession and provision of electricity charges allowance. For details about the one-off relief measures, please refer to Annex 2 of the Explanatory Notes in Part 5 of the "Monthly Report on the Consumer Price Index" on the C&SD's website.

Seasonally adjusted series may be revised as more data become available.

Chart 1 Movements of the Composite Consumer Price Index



^ Denotes the rate of change after netting out the effects of Government's one-off relief measures affecting CPIs, such as the rates concession and provision of electricity charges allowance. For details about the one-off relief measures, please refer to Annex 2 of the Explanatory Notes in Part 5 of the "Monthly Report on the Consumer Price Index" on the C&SD's website.

Seasonally adjusted series may be revised as more data become available.