

Each unit equipped with



Self-contained toilet



Shower area



Open cooking space



Electric water heater



Exhaust fan



The unit design, size and layout are for reference only and subject to the actual design of the contractor of each Light Public Housing project. The unit will provide and install only basic equipment like electric water heater and exhaust fan in the bathroom. Furniture, other electrical appliances and decorations as shown in the show flat will not be provided.

Light Public Housing

Improving the Living Environment of the Grassroots

Light Public Housing Phase 2 application covers four projects at Olympic Avenue in Kai Tak (Phase 1); Tsing Fuk Lane in Tuen Mun; Shun On Road in Kwun Tong; and Choi Yuen Road in Sheung Shui respectively, providing a total of about 5 060 units with estimated intake starting from the fourth quarter of 2025. There are different sizes of Light Public Housing units for households with one to two persons, three to four persons and four to five persons respectively.

Eligibility for application

Public rental housing General Applicants who are on the waiting list for traditional public rental housing for three years or more are eligible to apply for Light Public Housing, with priority given to family applicants. Those who are successfully allocated and choose to move into Light Public Housing will retain their position in the queue and eligibility for traditional public rental housing, but they will no longer be eligible to receive the allowance under the Cash Allowance Trial Scheme.

Unit allocation

Each applicant will have a maximum of three chances for allocation of a Light Public Housing unit. To give priority to the families in need to move into Light Public Housing, applicants who meet the following conditions (subject to eligibility verification) will be given a higher allocation priority:

- Currently residing in inadequate housing
- Having a special health condition(s)
- Having an elderly person(s)/minor child(ren), newborn bab(ies), etc. in the family

How to apply

Those who initially meet the eligibility criteria for Light Public Housing application will receive by post the application forms from the Housing Bureau by batches. Application forms can be submitted through the following methods^{Note 4}:

- sending the paper application form by post to P.O. Box of the Dedicated Team on Light Public Housing (P.O. Box 28222, Gloucester Road Post Office, Wan Chai, Hong Kong)
- depositing the paper application form into the drop-in boxes (from 9:00 a.m. to 6:00 p.m., Mondays to Fridays, except Saturdays, Sundays and public holidays) at:
 1. Light Public Housing Information Counter at Podium Level 2, Hong Kong Housing Authority Customer Service Centre, 3 Wang Tau Hom South Road, Kowloon
 2. Office of the Dedicated Team on Light Public Housing, Room 801, 8/F, Revenue Tower, 5 Gloucester Road, Wan Chai, Hong Kong
- if the applicant and all of the family members have registered for "iAM Smart+", they can fill in the e-Form for online submission by scanning the QR code in the paper application form

Note 4: Applicants who have previously submitted a Light Public Housing application form do not need to submit the application form again.

Application Guide for Light Public Housing

Scan the QR code below to browse the Light Public Housing website of the Housing Bureau to download the Application Guide and view the information of the projects currently open for application



www.hb.gov.hk/eng/lph

For enquiries, please contact the Dedicated Team on Light Public Housing of the Housing Bureau
 Tel: 3464 0700 Fax: 3563 9077
 Email: lphapp@hb.gov.hk

(2025/02)



Phase 2
LIGHT
PUBLIC
HOUSING

Phase 2 Application

Olympic Avenue, Kai Tak (Phase 1)

Tsing Fuk Lane, Tuen Mun

Shun On Road, Kwun Tong

Choi Yuen Road, Sheung Shui

Open for application
from 24 February 2025

Applications submitted on
or before 17 March 2025
will be handled with priority



Housing Bureau
The Government of the
Hong Kong Special Administrative Region
of the People's Republic of China

Olympic Avenue, Kai Tak (Phase 1)



Intake date: 4th quarter of 2025

Ancillary facilities

There are a convenience store, catering services, a launderette and a study/activity room, etc. within the project. It takes about 10 minutes to the Kowloon City Market on foot through the pedestrian subway

Public transport services

The project is adjacent to Kai Tak MTR Station (walking distance of about 5 to 7 minutes). There are a number of franchised bus and minibus routes in the vicinity travelling to/from various places in Hong Kong, Kowloon and New Territories

Education facilities

Under Primary One Admission School Net (34), there are 18 public sector primary schools, with 30 public sector secondary schools and 5 secondary schools under direct subsidy scheme in Kowloon City District ^{Note 1}

Unit type	Unit size (m ²)	Number of units	Monthly rent ^{Note 2}
1 to 2 persons	about 14	about 2 420	about \$1,310
3 to 4 persons	about 26	about 300	about \$2,410
4 to 5 persons	about 32	about 250	about \$2,990

Shun On Road, Kwun Tong (Renovated from school premises)



Intake date: 4th quarter of 2025

Ancillary facilities

There is a study/activity room within the project. Located in Shun On Estate, it takes about 5 to 10 minutes to the Shun Tin Shopping Centre and market on foot

Public transport services

It takes about 5 minutes to Shun Tin Bus Terminus on foot, which provides a number of franchised bus and minibus routes to/from Choi Hung MTR Station and various places in Hong Kong and Kowloon

Education facilities

Under Primary One Admission School Net (46), there are 9 public sector primary schools, with 27 public sector secondary schools and 6 schools under direct subsidy scheme in Kwun Tong District ^{Note 1}

Unit type	Unit size (m ²) ^{Note 3}	Number of units	Monthly rent ^{Note 2}
1 to 2 persons	about 14 to 18	about 60	about \$1,360 to \$1,660
3 to 4 persons	about 22 to 26	about 40	about \$2,030 to \$2,490
4 to 5 persons	about 28 to 35	about 30	about \$2,670 to \$3,270

Tsing Fuk Lane, Tuen Mun



Intake date: 4th quarter of 2025

Ancillary facilities

There are a convenience store, a launderette, a study/activity room, etc. within the project. It takes about 3 minutes to the Kin Sang Estate Commercial Centre on foot

Public transport services

The project is adjacent to Light Rail Ching Chung Stop. There are a number of franchised bus, MTR bus and minibus routes in the vicinity travelling to/from various places in Hong Kong, Kowloon and New Territories

Education facilities

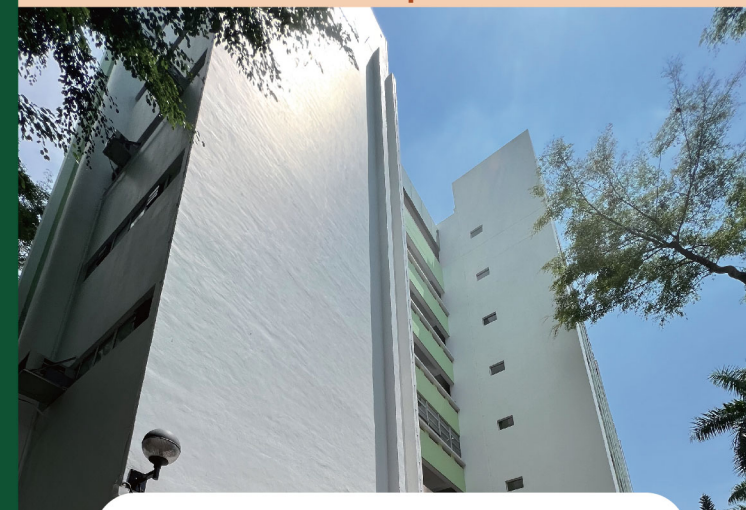
Under Primary One Admission School Net (70), there are 19 public sector primary schools, with 37 public sector secondary schools in Tuen Mun District ^{Note 1}

Unit type	Unit size (m ²)	Number of units	Monthly rent ^{Note 2}
1 to 2 persons	about 14	about 1 300	about \$860
3 to 4 persons	about 26	about 370	about \$1,600
4 to 5 persons	about 32	about 180	about \$1,990

Note 1: Detailed information of public sector primary schools, public sector secondary schools and secondary schools under direct subsidy scheme shall refer to the latest Primary One Admission School Net and Secondary School Profiles published by Education Bureau respectively.

Note 2: Rents vary depending on the unit size and the district. The rental level is set at around 90% of the rent of newly completed traditional public rental housing in the same district. Having regard to the biennial rent review of the traditional public rental housing, the rent of Light Public Housing will be adjusted accordingly.

Choi Yuen Road, Sheung Shui (Renovated from school premises)



Intake date: 4th quarter of 2025

Ancillary facilities

There is a study/activity room within the project. The project is adjacent to Choi Yuen Estate and Landmark North. It takes about 5 to 10 minutes to Sheung Shui MTR Station and Choi Yuen Plaza on foot

Public transport services

The project is adjacent to Sheung Shui MTR Station (walking distance of about 5 minutes). It takes about 10 to 12 minutes to various bus/minibus termini and San Wan Road Sheung Shui Bus-Bus Interchange on foot, which provide a number of franchised bus and minibus routes to/from Fanling and various places in Hong Kong and Kowloon

Education facilities

Under Primary One Admission School Net (80), there are 14 public sector primary schools, with 19 public sector secondary schools and 1 secondary school under direct subsidy scheme in North District ^{Note 1}

Unit type	Unit size (m ²) ^{Note 3}	Number of units	Monthly rent ^{Note 2}
1 to 2 persons	about 15 to 19	about 40	about \$1,020 to \$1,250
3 to 4 persons	about 22 to 27	about 40	about \$1,460 to \$1,780
4 to 5 persons	about 28 to 35	about 30	about \$1,900 to \$2,320

Note 3: For the LPH converted from the five vacant or to-be-vacant school premises, the internal floor area of some of the units may vary due to limitations posed by the existing structural partitioning.