

Table 1 Consumer Price Indices and Year-on-year Rates of Change
at Section Level for March 2025
(Oct. 2019 - Sep. 2020 = 100)

Section	Composite CPI		CPI(A)		CPI(B)		CPI(C)	
	Index for Mar 2025	% change over Mar 2024	Index for Mar 2025	% change over Mar 2024	Index for Mar 2025	% change over Mar 2024	Index for Mar 2025	% change over Mar 2024
Food	110.8	+0.3	110.4	+0.3	111.0	+0.4	111.2	+0.2
<i>Meals out and takeaway food</i>	113.7	+1.3	114.1	+1.5	113.6	+1.3	113.1	+1.0
<i>Basic food</i>	105.9	-1.5	105.1	-1.5	106.0	-1.6	107.3	-1.6
Housing #	105.7	+1.7	111.8	+2.4	103.1	+1.4	102.0	+1.1
<i>Private housing rent</i>	101.0	+0.9	101.6	+1.0	100.9	+1.0	100.6	+0.8
<i>Public housing rent</i>	183.7	+10.5	183.8	+10.5	183.1	+10.4	-	-
Electricity, gas and water	147.3	+14.0	154.4	+17.2	143.3	+12.3	137.7	+9.7
Alcoholic drinks and tobacco	146.9	+4.4	155.6	+5.6	141.9	+3.6	129.8	+1.8
Clothing and footwear	109.3	-2.8	108.3	-2.9	109.1	-2.9	110.2	-2.6
Durable goods	97.0	-0.5	95.3	-1.0	96.3	-0.6	99.1	*
Miscellaneous goods	101.6	+1.0	101.5	+1.5	101.6	+1.1	101.7	+0.4
Transport	110.3	+1.7	107.6	+2.5	110.6	+1.9	111.7	+1.0
Miscellaneous services	108.0	+1.0	105.2	+0.5	108.0	+1.0	109.9	+1.4
<i>Selected major groups</i>								
<i>Educational services</i>	112.7	+2.6	110.3	+2.1	112.1	+2.5	114.4	+3.0
<i>Information and communications services</i>	93.1	-1.6	92.3	-1.7	93.5	-1.5	93.9	-1.3
<i>Medical services</i>	113.3	+2.4	112.6	+2.0	113.4	+2.3	113.7	+2.8
All items	108.6	+1.4	111.5	+2.0	107.3	+1.2	107.0	+1.0

* Increase or decrease of less than 0.05%

- Not applicable

Note:

The CPI(A), CPI(B) and CPI(C) are compiled with reference to the average expenditure patterns of different groups of households as obtained from the Household Expenditure Survey. By aggregating the expenditure patterns of all households covered by the above three indices, a Composite CPI is also compiled.

The expenditure ranges of the households covered in the 2019/20-based CPI series are as follows:

	Approximate percentage of households covered	Average monthly household expenditure range (at 2019/20 prices)	Average monthly household expenditure range (adjusted to 2024 prices)
	(%)	(\$)	(\$)
CPI(A)	50	6,500 - 27,999	6,900 - 29,500
CPI(B)	30	28,000 - 48,499	29,500 - 51,000
CPI(C)	10	48,500 - 91,999	51,000 - 97,000
Composite CPI	90	6,500 - 91,999	6,900 - 97,000

Apart from "Private housing rent" and "Public housing rent", the "Housing" section also includes "Management fees and other housing charges".

Table 2 Movements of Consumer Price Indices, March 2023 - March 2025

<u>Year/month</u>	CPI			
	Year-on-year rate of change (%)			
	<u>Composite CPI</u>	<u>CPI(A)</u>	<u>CPI(B)</u>	<u>CPI(C)</u>
2023 Mar	+1.7 (+1.7)	+1.7 (+1.7)	+1.6 (+1.6)	+1.9 (+1.9)
Apr	+2.1 (+1.8)	+2.2 (+1.9)	+2.0 (+1.7)	+2.1 (+1.8)
May	+2.0 (+1.8)	+2.2 (+1.9)	+1.9 (+1.6)	+2.0 (+1.8)
Jun	+1.9 (+1.7)	+2.1 (+1.8)	+1.9 (+1.6)	+1.8 (+1.6)
Jul	+1.8 (+1.6)	+1.9 (+1.6)	+1.8 (+1.5)	+1.8 (+1.6)
Aug	+1.8 (+1.5)	+1.8 (+1.5)	+1.7 (+1.4)	+1.8 (+1.6)
Sep	+2.0 (+1.8)	+2.1 (+1.8)	+2.0 (+1.7)	+2.1 (+1.9)
Oct	+2.7 (+1.7)	+3.2 (+1.7)	+2.5 (+1.7)	+2.4 (+1.9)
Nov	+2.6 (+1.6)	+3.0 (+1.4)	+2.4 (+1.6)	+2.4 (+1.9)
Dec	+2.4 (+1.4)	+2.7 (+1.1)	+2.2 (+1.4)	+2.3 (+1.8)
2024 Jan	+1.7 (+0.8)	+2.0 (+0.5)	+1.6 (+0.8)	+1.5 (+1.0)
Feb	+2.1 (+1.2)	+2.3 (+0.8)	+2.0 (+1.2)	+2.0 (+1.6)
Mar	+2.0 (+1.0)	+2.3 (+0.8)	+1.9 (+1.1)	+1.7 (+1.3)
Apr	+1.1 (+0.9)	+1.1 (+0.8)	+1.0 (+1.0)	+1.1 (+1.1)
May	+1.2 (+1.0)	+1.2 (+0.9)	+1.1 (+1.1)	+1.2 (+1.2)
Jun	+1.5 (+1.0)	+1.7 (+0.9)	+1.3 (+1.0)	+1.3 (+1.2)
Jul	+2.5 (+1.2)	+3.1 (+1.0)	+2.3 (+1.2)	+2.0 (+1.4)
Aug	+2.5 (+1.2)	+3.2 (+1.1)	+2.2 (+1.2)	+1.9 (+1.3)
Sep	+2.2 (+0.9)	+2.9 (+0.9)	+2.0 (+0.9)	+1.6 (+1.0)
Oct	+1.4 (+1.2)	+1.6 (+1.5)	+1.3 (+1.1)	+1.2 (+1.1)
Nov	+1.4 (+1.2)	+1.7 (+1.6)	+1.3 (+1.1)	+1.1 (+1.0)
Dec	+1.4 (+1.3)	+1.7 (+1.6)	+1.4 (+1.2)	+1.2 (+1.1)
2025 Jan	+2.0 (+1.6)	+2.5 (+1.9)	+1.7 (+1.5)	+1.7 (+1.5)
Feb	+1.4 (+1.1)	+2.0 (+1.4)	+1.2 (+1.0)	+1.0 (+0.9)
Mar	+1.4 (+1.0)	+2.0 (+1.4)	+1.2 (+0.9)	+1.0 (+0.8)

() Denotes the rate of change after netting out the effects of Government's one-off relief measures affecting CPIs, such as the rates concession and provision of electricity charges allowance. For details about the one-off relief measures, please refer to Annex 2 of the Explanatory Notes in Part 5 of the "Monthly Report on the Consumer Price Index" on the C&SD's website.

Table 3 Movements of Seasonally Adjusted Consumer Price Indices, March 2023 - March 2025

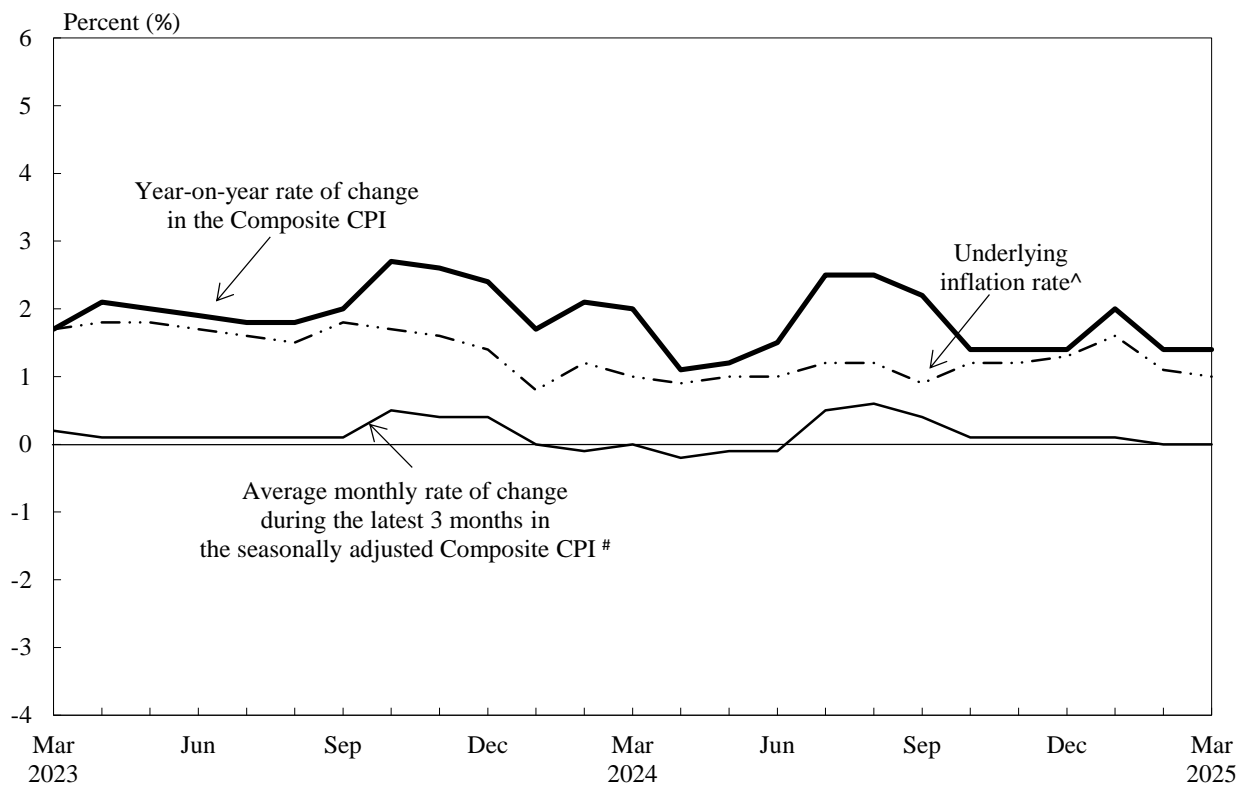
Seasonally adjusted CPI [#]				
Average monthly rate of change during the latest 3 months (%)				
<u>Year/month</u>	<u>Composite CPI</u>	<u>CPI(A)</u>	<u>CPI(B)</u>	<u>CPI(C)</u>
2023 Mar	+0.2 (+0.2)	+0.1 (+0.1)	+0.1 (+0.1)	+0.2 (+0.2)
Apr	+0.1 (+0.1)	+0.1 (+0.1)	+0.1 (+0.1)	+0.1 (+0.1)
May	+0.1 (+0.1)	* (+0.1)	+0.1 (+0.1)	+0.1 (+0.1)
Jun	+0.1 (+0.1)	+0.1 (+0.1)	+0.1 (+0.1)	+0.1 (+0.1)
Jul	+0.1 (+0.1)	+0.1 (+0.1)	+0.1 (+0.1)	+0.1 (+0.1)
Aug	+0.1 (+0.1)	+0.2 (*)	+0.1 (+0.1)	+0.1 (+0.1)
Sep	+0.1 (+0.1)	+0.1 (+0.1)	+0.1 (+0.1)	+0.2 (+0.2)
Oct	+0.5 (+0.1)	+0.6 (+0.1)	+0.4 (+0.2)	+0.4 (+0.2)
Nov	+0.4 (+0.1)	+0.6 (+0.1)	+0.4 (+0.1)	+0.3 (+0.2)
Dec	+0.4 (+0.1)	+0.5 (*)	+0.3 (+0.1)	+0.3 (+0.1)
2024 Jan	* (*)	* (*)	* (*)	+0.1 (+0.1)
Feb	-0.1 (-0.1)	-0.1 (-0.1)	* (*)	* (*)
Mar	* (*)	* (*)	* (*)	* (*)
Apr	-0.2 (+0.1)	-0.3 (+0.1)	-0.2 (+0.1)	-0.1 (+0.1)
May	-0.1 (+0.2)	-0.3 (+0.2)	-0.1 (+0.2)	-0.1 (+0.1)
Jun	-0.1 (+0.1)	-0.1 (+0.2)	-0.1 (+0.1)	* (+0.1)
Jul	+0.5 (+0.2)	+0.7 (+0.2)	+0.5 (+0.2)	+0.4 (+0.2)
Aug	+0.6 (+0.1)	+0.8 (+0.1)	+0.5 (+0.1)	+0.4 (+0.1)
Sep	+0.4 (+0.1)	+0.5 (+0.1)	+0.4 (+0.1)	+0.3 (+0.1)
Oct	+0.1 (+0.2)	+0.1 (+0.2)	+0.1 (+0.1)	+0.1 (+0.1)
Nov	+0.1 (+0.1)	+0.1 (+0.2)	+0.1 (+0.1)	+0.1 (+0.1)
Dec	+0.1 (+0.2)	+0.1 (+0.3)	+0.1 (+0.1)	+0.1 (+0.1)
2025 Jan	+0.1 (+0.1)	+0.2 (*)	+0.1 (+0.1)	+0.1 (+0.1)
Feb	* (*)	+0.1 (-0.1)	* (*)	+0.1 (*)
Mar	* (*)	+0.1 (-0.1)	* (*)	* (*)

* Increase or decrease of less than 0.05%

() Denotes the rate of change after netting out the effects of Government's one-off relief measures affecting CPIs, such as the rates concession and provision of electricity charges allowance. For details about the one-off relief measures, please refer to Annex 2 of the Explanatory Notes in Part 5 of the "Monthly Report on the Consumer Price Index" on the C&SD's website.

Seasonally adjusted series may be revised as more data become available.

Chart 1 Movements of the Composite Consumer Price Index



^ Denotes the rate of change after netting out the effects of Government's one-off relief measures affecting CPIs, such as the rates concession and provision of electricity charges allowance. For details about the one-off relief measures, please refer to Annex 2 of the Explanatory Notes in Part 5 of the "Monthly Report on the Consumer Price Index" on the C&SD's website.

Seasonally adjusted series may be revised as more data become available.