

Table 1

THE LAND REGISTRY
Consolidated Monthly Statistics in respect of deeds received
for registration in the Land Registry

Month : July 2025

| Item | Nature of Deeds | Number of Deeds received for registration | | | Consideration (nearest \$ million) | | |
|------|--|---|--------------------|---------------------|------------------------------------|-----------------|--------|
| | | Urban | New Territories | Total | Urban | New Territories | Total |
| 1. | Agreements for Sale and Purchase of Building Units | 3,674 (4,065) | 3,538 (3,675) | 7,212 (7,740) | 35,415 | 19,204 | 54,619 |
| 2. | Agreements for Sale and Purchase of Land | 5 | 174 | 179 | 880 | 644 | 1,524 |
| | Sub-total (1) + (2) | 3,679 | 3,712 | 7,391 | 36,295 | 19,848 | 56,143 |
| 3. | Assignments of Building Units | 5,348 (5,957) | 3,894 (4,051) | 9,242 (10,008) | 44,974 | 18,520 | 63,494 |
| 4. | Assignments of Land | 7 | 373 | 380 | 995 | 947 | 1,942 |
| | Sub-total (3) + (4) | 5,355 | 4,267 | 9,622 | 45,969 | 19,467 | 65,436 |
| 5. | Building Mortgages/Building Legal Charges | 0 | 1 | 1 | | | |
| 6. | Other Mortgages/Legal Charges | 3,294 | 2,694 | 5,988 | | | |
| | Sub-total (5) + (6) | 3,294 | 2,695 | 5,989 | | | |
| 7. | Receipts/Discharges/Releases | 2,805 | 2,976 | 5,781 | | | |
| 8. | Leases/Tenancy Agreements | 207 | 93 | 300 | | | |
| 9. | Exclusion Orders | 0 | 0 | 0 | | | |
| 10. | Others | 4,358 | 4,465 | 8,823 | | | |
| | Total | 19,698 | 18,208 | 37,906 | | | |

Note : Figures in brackets denote the number of units involved.

Table 2

THE LAND REGISTRY
Comparison of Monthly Statistics

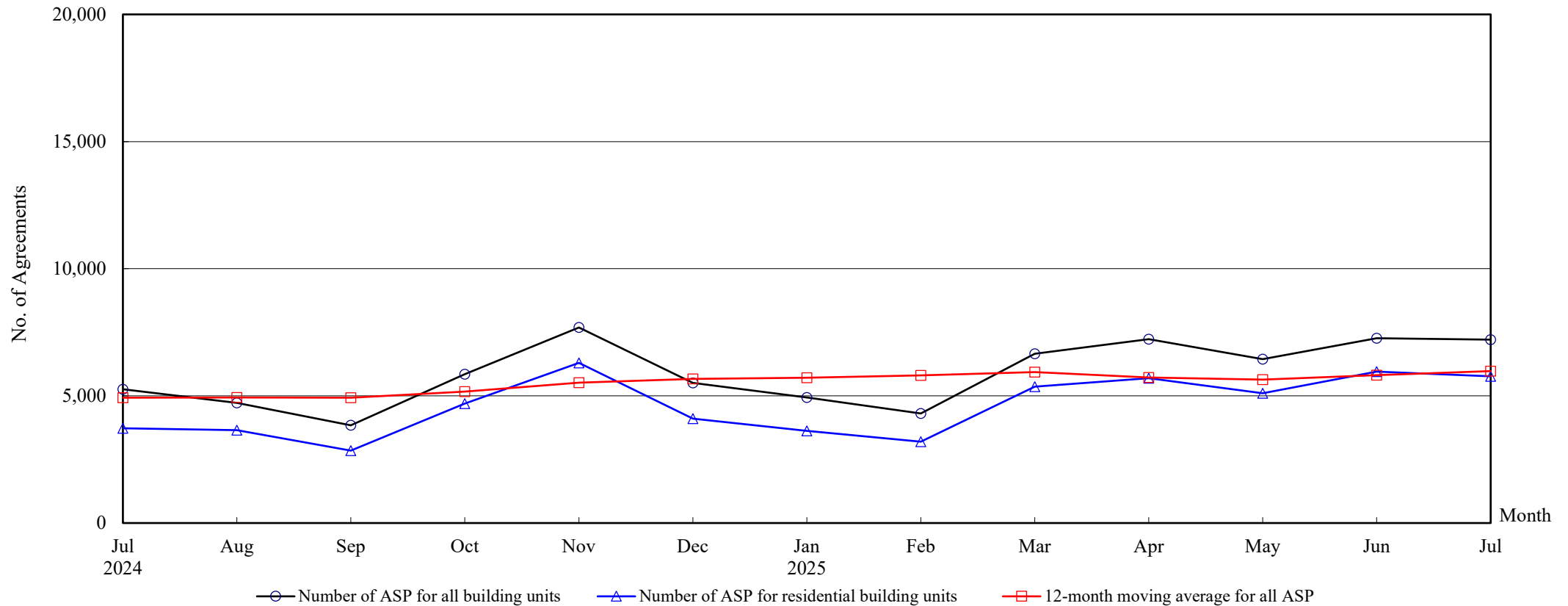
Month : July 2025

| Item | 2025 July | 2025 June | 2024 July | July 2025 | | | |
|---|--------------|--------------|--------------|---|------------|----------------------|------------|
| | | | | Increase (+) or Decrease (-) as compared with | | | |
| | | | | June 2025 | | July 2024 | |
| | | | | No. or Consideration | Percentage | No. or Consideration | Percentage |
| 1. Agreements for Sale and Purchase of Building Units | | | | | | | |
| (a) No. | 7,212 | 7,271 | 5,262 | - 59 | - 0.8 | + 1,950 | + 37.1 |
| (b) Consideration | 54,619 | 66,410 | 42,669 | - 11,791 | - 17.8 | + 11,950 | + 28.0 |
| 2. Agreements for Sale and Purchase of Land | | | | | | | |
| (a) No. | 179 | 201 | 234 | - 22 | - 10.9 | - 55 | - 23.5 |
| (b) Consideration | 1,524 | 1,312 | 2,334 | + 212 | + 16.2 | - 810 | - 34.7 |
| Sub-total of (1) + (2) | | | | | | | |
| (a) No. | 7,391 | 7,472 | 5,496 | - 81 | - 1.1 | + 1,895 | + 34.5 |
| (b) Consideration | 56,143 | 67,722 | 45,003 | - 11,579 | - 17.1 | + 11,140 | + 24.8 |
| 3. Assignments of Building Units | | | | | | | |
| (a) No. | 9,242 | 10,284 | 9,188 | - 1,042 | - 10.1 | + 54 | + 0.6 |
| (b) Consideration | 63,494 | 56,603 | 62,413 | + 6,891 | + 12.2 | + 1,081 | + 1.7 |
| 4. Assignments of Land | | | | | | | |
| (a) No. | 380 | 358 | 385 | + 22 | + 6.1 | - 5 | - 1.3 |
| (b) Consideration | 1,942 | 1,833 | 3,364 | + 109 | + 5.9 | - 1,422 | - 42.3 |
| Sub-total of (3) + (4) | | | | | | | |
| (a) No. | 9,622 | 10,642 | 9,573 | - 1,020 | - 9.6 | + 49 | + 0.5 |
| (b) Consideration | 65,436 | 58,436 | 65,777 | + 7,000 | + 12.0 | - 341 | - 0.5 |
| 5. No. of Building Mortgages/Building Legal Charges | 1 | 4 | 2 | - 3 | - 75.0 | - 1 | - 50.0 |
| 6. No. of Other Mortgages/Legal Charges | 5,988 | 6,993 | 6,309 | - 1,005 | - 14.4 | - 321 | - 5.1 |
| Sub-total of (5) + (6) | 5,989 | 6,997 | 6,311 | - 1,008 | - 14.4 | - 322 | - 5.1 |
| 7. No. of Receipts/Discharges/Releases | 5,781 | 5,382 | 5,821 | + 399 | + 7.4 | - 40 | - 0.7 |
| 8. No. of Public Search | 423,893 | 409,789 | 396,209 | + 14,104 | + 3.4 | + 27,684 | + 7.0 |

Note : Consideration rounded to the nearest million Hong Kong dollars.

The Land Registry

Chart showing the number of Sale and Purchase Agreements of building units from July 2024 to July 2025



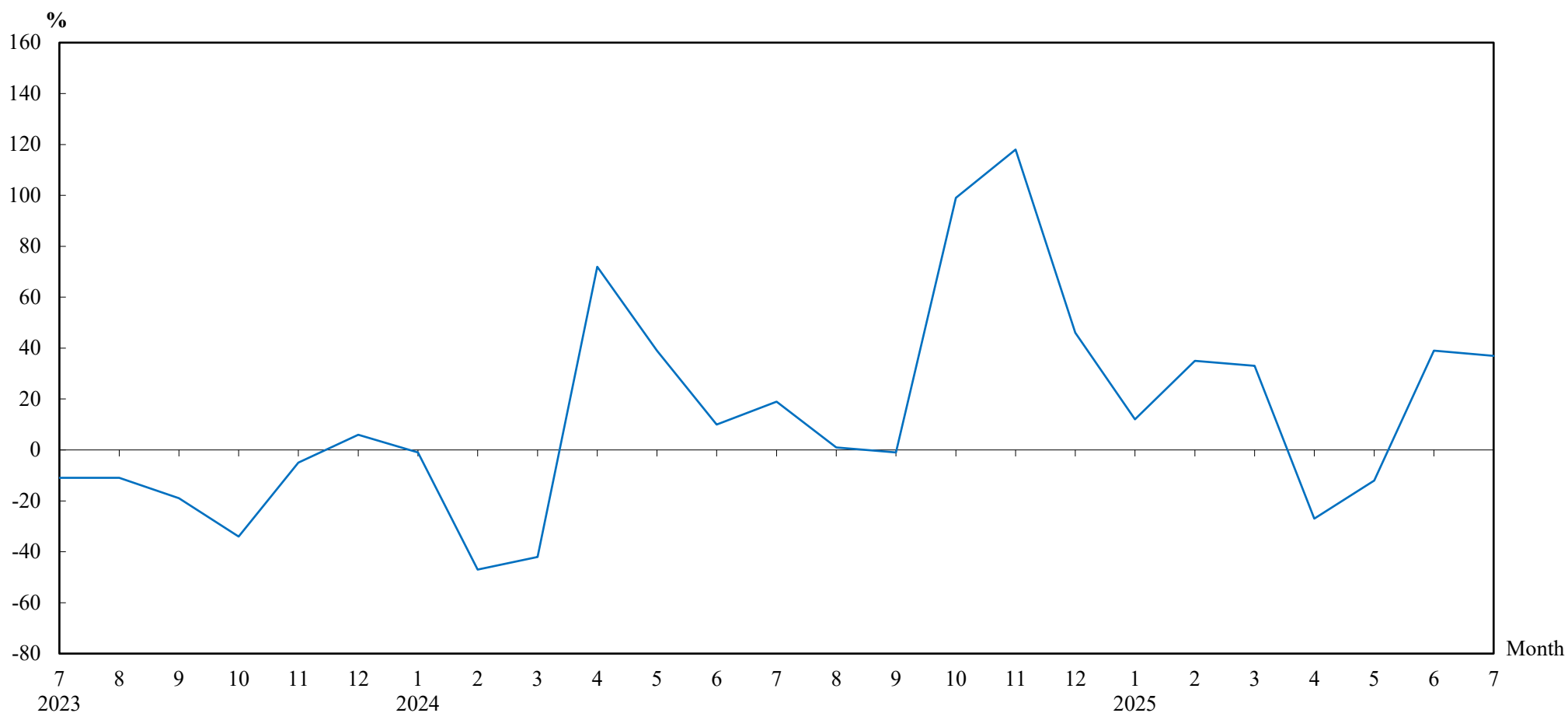
Number of Sale and Purchase Agreements of building units

| Year | 2024 | | | | | | 2025 | | | | | | |
|---|-------|-------|-------|-------|-------|-------|-------|-------|-------|-------|-------|-------|-------|
| Month | Jul | Aug | Sep | Oct | Nov | Dec | Jan | Feb | Mar | Apr | May | Jun | Jul |
| Number of ASP for all building units | 5,262 | 4,729 | 3,843 | 5,857 | 7,689 | 5,510 | 4,938 | 4,307 | 6,661 | 7,229 | 6,442 | 7,271 | 7,212 |
| Number of ASP for residential building units ⁽¹⁾ | 3,723 | 3,654 | 2,848 | 4,697 | 6,298 | 4,103 | 3,626 | 3,200 | 5,367 | 5,694 | 5,105 | 5,955 | 5,766 |
| 12-month moving average for all ASP ⁽²⁾ | 4,928 | 4,934 | 4,930 | 5,173 | 5,519 | 5,665 | 5,710 | 5,803 | 5,940 | 5,719 | 5,643 | 5,812 | 5,974 |

Notes : (1) Statistics on sales of residential units do not include sale and purchase agreements relating to sales of units under the Home Ownership Scheme, the Private Sector Participation Scheme, the Tenants Purchase Scheme, etc, unless the premium of the unit concerned has been paid after the sale restriction period.

(2) 12-month moving average is calculated by dividing the sum of the figures of the previous 12 months by 12.

THE LAND REGISTRY

Year-on-year Rate of Change in the Number of Sale and Purchase Agreements**Number of Sale and Purchase Agreements of residential and non-residential building units**

| Year/Month | Jan | Feb | Mar | Apr | May | Jun | Jul | Aug | Sep | Oct | Nov | Dec |
|------------|-------|-------|-------|-------|-------|-------|-------|-------|-------|-------|-------|-------|
| 2023 | 4,427 | 5,980 | 8,599 | 5,755 | 5,284 | 4,777 | 4,426 | 4,660 | 3,893 | 2,938 | 3,532 | 3,764 |
| 2024 | 4,401 | 3,189 | 5,013 | 9,880 | 7,361 | 5,245 | 5,262 | 4,729 | 3,843 | 5,857 | 7,689 | 5,510 |
| 2025 | 4,938 | 4,307 | 6,661 | 7,229 | 6,442 | 7,271 | 7,212 | | | | | |

Table 5

THE LAND REGISTRY

Number of Sale and Purchase Agreements of residential building units and total consideration
from July 2024 to July 2025

| Year | 2024 | | | | | | | | | | | | 2025 | | | | | | | | | | | | | |
|-------------------------------------|--------|----|--------|----|--------|----|--------|----|--------|----|--------|----|--------|----|--------|----|--------|----|--------|----|--------|----|--------|----|--------|----|
| Month | 7 | | 8 | | 9 | | 10 | | 11 | | 12 | | 1 | | 2 | | 3 | | 4 | | 5 | | 6 | | 7 | |
| Range of Consideration (\$ million) | No. | % | No. | % | No. | % | No. | % | No. | % | No. | % | No. | % | No. | % | No. | % | No. | % | No. | % | No. | % | No. | % |
| Less than 1 | 22 | 1 | 25 | 1 | 20 | 1 | 36 | 1 | 16 | 0 | 10 | 0 | 19 | 1 | 24 | 1 | 15 | 0 | 23 | 0 | 30 | 1 | 31 | 1 | 17 | 0 |
| 1 to less than 2 | 106 | 3 | 111 | 3 | 73 | 3 | 104 | 2 | 105 | 2 | 93 | 2 | 100 | 3 | 88 | 3 | 103 | 2 | 99 | 2 | 100 | 2 | 121 | 2 | 117 | 2 |
| 2 to less than 3 | 346 | 9 | 457 | 13 | 339 | 12 | 508 | 11 | 515 | 8 | 486 | 12 | 412 | 11 | 435 | 14 | 447 | 8 | 466 | 8 | 370 | 7 | 427 | 7 | 454 | 8 |
| 3 to less than 4 | 650 | 17 | 649 | 18 | 501 | 18 | 710 | 15 | 814 | 13 | 692 | 17 | 651 | 18 | 607 | 19 | 969 | 18 | 1,186 | 21 | 917 | 18 | 1,037 | 17 | 1,039 | 18 |
| 4 to less than 5 | 548 | 15 | 594 | 16 | 422 | 15 | 732 | 16 | 870 | 14 | 653 | 16 | 611 | 17 | 573 | 18 | 1,173 | 22 | 955 | 17 | 912 | 18 | 1,011 | 17 | 901 | 16 |
| 5 to less than 6 | 571 | 15 | 439 | 12 | 407 | 14 | 573 | 12 | 872 | 14 | 530 | 13 | 496 | 14 | 379 | 12 | 735 | 14 | 804 | 14 | 796 | 16 | 989 | 17 | 718 | 12 |
| 6 to less than 7 | 352 | 9 | 369 | 10 | 288 | 10 | 531 | 11 | 590 | 9 | 375 | 9 | 321 | 9 | 250 | 8 | 472 | 9 | 515 | 9 | 494 | 10 | 588 | 10 | 495 | 9 |
| 7 to less than 8 | 227 | 6 | 273 | 7 | 186 | 7 | 325 | 7 | 507 | 8 | 261 | 6 | 222 | 6 | 158 | 5 | 332 | 6 | 404 | 7 | 379 | 7 | 408 | 7 | 386 | 7 |
| 8 to less than 9 | 219 | 6 | 158 | 4 | 140 | 5 | 233 | 5 | 322 | 5 | 233 | 6 | 166 | 5 | 129 | 4 | 263 | 5 | 309 | 5 | 271 | 5 | 314 | 5 | 312 | 5 |
| 9 to less than 10 | 122 | 3 | 123 | 3 | 87 | 3 | 202 | 4 | 345 | 5 | 137 | 3 | 101 | 3 | 85 | 3 | 167 | 3 | 151 | 3 | 140 | 3 | 160 | 3 | 265 | 5 |
| 10 to less than 11 | 77 | 2 | 63 | 2 | 64 | 2 | 135 | 3 | 232 | 4 | 95 | 2 | 83 | 2 | 67 | 2 | 147 | 3 | 144 | 3 | 113 | 2 | 133 | 2 | 223 | 4 |
| 11 to less than 12 | 49 | 1 | 55 | 2 | 39 | 1 | 80 | 2 | 181 | 3 | 57 | 1 | 52 | 1 | 67 | 2 | 88 | 2 | 97 | 2 | 90 | 2 | 87 | 1 | 155 | 3 |
| 12 to less than 13 | 55 | 1 | 48 | 1 | 41 | 1 | 107 | 2 | 132 | 2 | 58 | 1 | 55 | 2 | 51 | 2 | 63 | 1 | 83 | 1 | 88 | 2 | 51 | 1 | 122 | 2 |
| 13 to less than 14 | 40 | 1 | 35 | 1 | 34 | 1 | 46 | 1 | 79 | 1 | 47 | 1 | 29 | 1 | 38 | 1 | 51 | 1 | 52 | 1 | 59 | 1 | 65 | 1 | 56 | 1 |
| 14 to less than 15 | 32 | 1 | 29 | 1 | 27 | 1 | 47 | 1 | 59 | 1 | 35 | 1 | 35 | 1 | 20 | 1 | 27 | 1 | 43 | 1 | 41 | 1 | 43 | 1 | 56 | 1 |
| 15 to less than 16 | 27 | 1 | 20 | 1 | 13 | 0 | 21 | 0 | 45 | 1 | 24 | 1 | 24 | 1 | 30 | 1 | 32 | 1 | 34 | 1 | 31 | 1 | 37 | 1 | 35 | 1 |
| 16 to less than 17 | 30 | 1 | 24 | 1 | 16 | 1 | 29 | 1 | 70 | 1 | 34 | 1 | 23 | 1 | 33 | 1 | 23 | 0 | 33 | 1 | 25 | 0 | 25 | 0 | 29 | 1 |
| 17 to less than 18 | 25 | 1 | 23 | 1 | 15 | 1 | 20 | 0 | 68 | 1 | 30 | 1 | 26 | 1 | 14 | 0 | 31 | 1 | 25 | 0 | 21 | 0 | 21 | 0 | 34 | 1 |
| 18 to less than 19 | 24 | 1 | 18 | 0 | 17 | 1 | 16 | 0 | 54 | 1 | 14 | 0 | 28 | 1 | 19 | 1 | 17 | 0 | 19 | 0 | 20 | 0 | 23 | 0 | 19 | 0 |
| 19 to less than 20 | 16 | 0 | 11 | 0 | 13 | 0 | 25 | 1 | 41 | 1 | 19 | 0 | 19 | 1 | 6 | 0 | 9 | 0 | 25 | 0 | 23 | 0 | 18 | 0 | 34 | 1 |
| 20 or above | 185 | 5 | 130 | 4 | 106 | 4 | 217 | 5 | 381 | 6 | 220 | 5 | 153 | 4 | 127 | 4 | 203 | 4 | 227 | 4 | 185 | 4 | 366 | 6 | 299 | 5 |
| Total No. | 3,723 | | 3,654 | | 2,848 | | 4,697 | | 6,298 | | 4,103 | | 3,626 | | 3,200 | | 5,367 | | 5,694 | | 5,105 | | 5,955 | | 5,766 | |
| Total Consideration (\$ million) | 35,675 | | 28,471 | | 20,838 | | 37,275 | | 57,261 | | 32,563 | | 26,743 | | 23,014 | | 38,814 | | 42,197 | | 38,244 | | 61,061 | | 46,354 | |

Note : Figures in percentage for individual items may not add up to 100% due to rounding.

Table 6**THE LAND REGISTRY****Monthly Statistics in respect of Sale & Purchase Agreements
of building units received for registration on regional basis**

Month : July 2025

| Item | District | Sale and Purchase Agreements of Building Units | |
|------|--------------|--|---------------------------------------|
| | | No. of Transactions | Consideration (nearest \$ million) |
| 1. | Hong Kong | 1,591 | 19,355 |
| 2. | Kowloon | 2,083 | 16,060 |
| 3. | Islands | 105 | 670 |
| 4. | North | 157 | 628 |
| 5. | Sai Kung | 535 | 3,453 |
| 6. | Shatin | 626 | 3,782 |
| 7. | Tai Po | 410 | 2,369 |
| 8. | Tsuen Wan | 593 | 2,681 |
| 9. | Tuen Mun | 608 | 2,824 |
| 10. | Yuen Long | 504 | 2,797 |
| | Total | 7,212 | 54,619 |