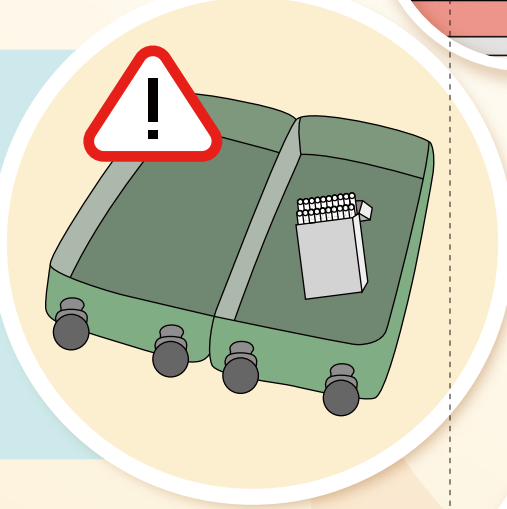


The import of alternative smoking products (ASPs) (electronic cigarettes, heated tobacco products, and herbal cigarettes), including bringing in by incoming travellers is prohibited.

Possession (smoking or use) of ASPs in public places is prohibited. Offenders are liable to a fine of \$3,000.

Visitors bringing in tobacco in excess of the exempted quantities (19 cigarettes, or one cigar*, or 25 grams of other manufactured tobacco) should enter the **Red Channel** and make a declaration to Customs officers.
*In cases of more than one cigar, the total weight must not exceed 25 grams.



Buying or selling illicit cigarettes is also illegal and the maximum penalty upon conviction is a fine of \$2 million and imprisonment for seven years.



The law also prohibits the provision of any smoking products (conventional smoking products, electronic cigarettes, heated tobacco products, herbal cigarettes) to persons under the age of 18. The maximum penalty is a fine of \$50,000 and six months' imprisonment.

Customs and Excise Department

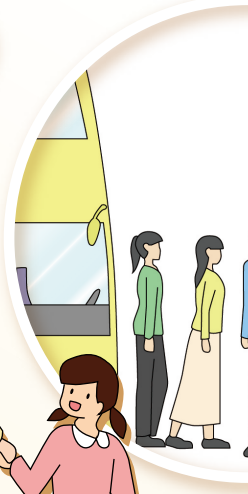
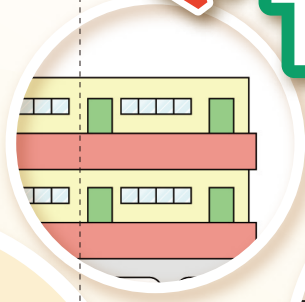


Tobacco and Alcohol Control Office, Department of Health



Visitors' Guide

Tobacco Control Measures in Hong Kong



衛生署控煙酒辦公室
Tobacco and Alcohol Control Office
Department of Health



Statutory no smoking areas cover

Public transport carriers

Indoor areas: Public place, restaurant premises, shopping malls, bars, etc.

Indoor and outdoor areas: cinemas, escalators, child care centres, hospitals, schools, etc.

3 metres outside the entrances/ exits for child care centres, hospitals, schools, residential care homes, and specified clinics or health centres, etc.

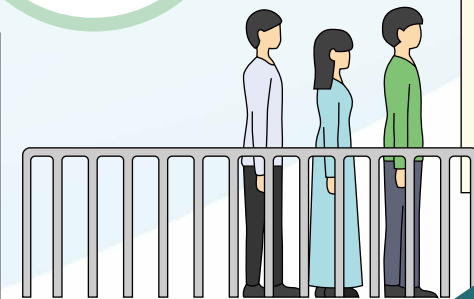
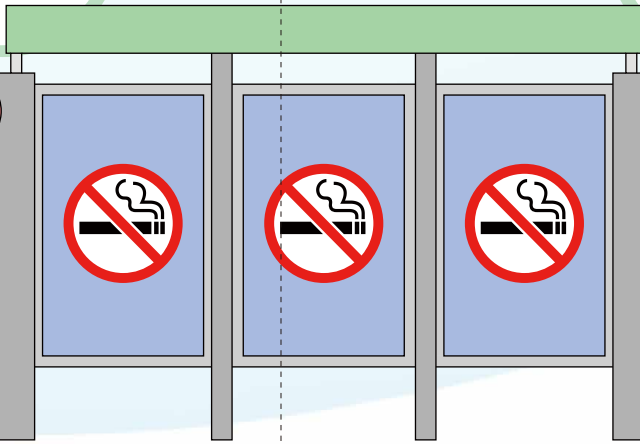
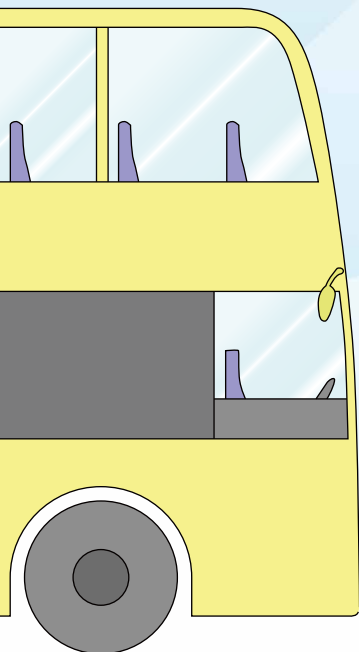


Smoking is prohibited in the following situations

While queuing to board a public transport carrier

Staying at a bus shelter or other delineated areas of designated boarding locations

While queuing to enter museums, stadiums, and theme parks, etc.



Offenders are liable to a fixed penalty of \$3,000